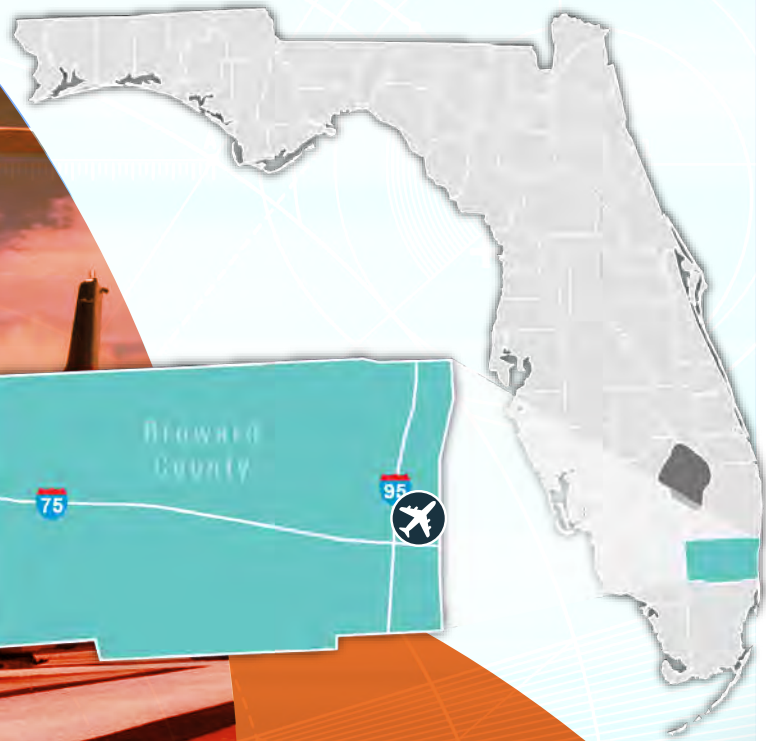
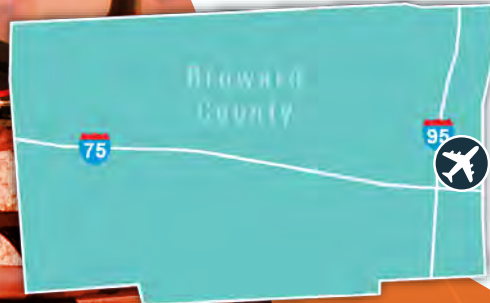


Downtown Fort Lauderdale Helistop



FLORIDA DEPARTMENT OF TRANSPORTATION
AVIATION AND SPACEPORTS OFFICE

Airport: Downtown Fort Lauderdale
Helistop (DT1)

City: Fort Lauderdale, Florida

County: Broward County

Owner: City of Fort Lauderdale

Role: General Aviation Airport

Located atop the ninth floor rooftop of Central Park Mall Parking Garage at 201 SE Second Street, Downtown Fort Lauderdale Heliport is positioned directly within Fort Lauderdale's thriving downtown and serves as an impressive heliport access point for the Southeast Florida region. Noted as one of the most unique heliports in the region due to its close proximity to upscale offices, restaurants, shops and the 360 degree panoramic view of downtown, the heliport can accommodate a variety of helicopters.



Existing Facilities

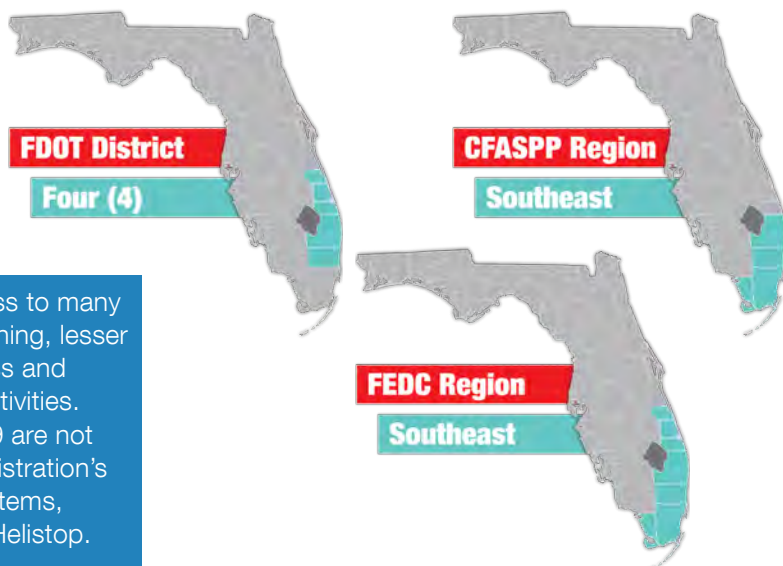
The Downtown Ft. Lauderdale Heliport features a 14,500-square foot concrete landing pad with medium intensity perimeter lights. The landing area can accommodate helicopters with a maximum landing weight of 11,900 pounds and a 46-foot rotor diameter. Just beneath the elevated landing platform is a lobby area with a pilot lounge and meeting area. While the landing area is open 24-hours a day, the lobby area is only available with a reservation. The helicopter parking space has a four-hour limit and also requires prior reservation. Overnight parking is not permitted.

For more information, please visit DT1's website at:

<https://www.flyfxe.com/facilities/dt1-downtown-helistop>



Airport Classification



General aviation airports provide access to many benefits of aviation, including flight training, lesser amounts of air cargo, tourism, business and corporate flights, and other aviation activities. Of Florida's 129 public use airports, 29 are not included in the Federal Aviation Administration's National Plan of Integrated Airport Systems, including Downtown Fort Lauderdale Heliport.





Community Service



The Downtown Fort Lauderdale Helistop offer flyers a convenient way to easily access the offices and amenities of downtown Fort Lauderdale. Originally developed to ostensibly serve VIPs and executives, the helistop has instead mostly served as a training ground for helicopter pilots due to its unique location nestled among skyscrapers. It has also served as a key landing spot for law enforcement and rescue workers. The helistop is supported by revenue generated at Fort Lauderdale Executive Airport.

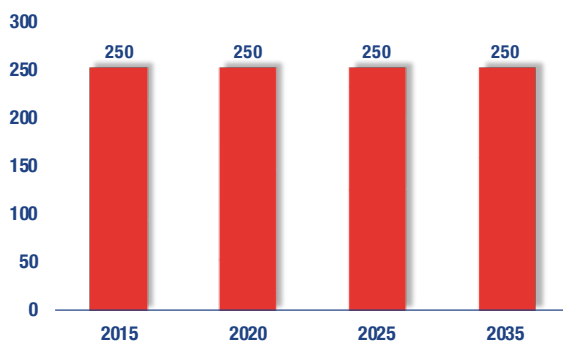


Current and Forecast Demand

Airport management estimates that the heliport accommodates 200 to 300 operations per year. The heliport is particularly busy whenever major local events are occurring, such as the Fort Lauderdale International Boat Show. However, there are no aircraft based at the helistop.



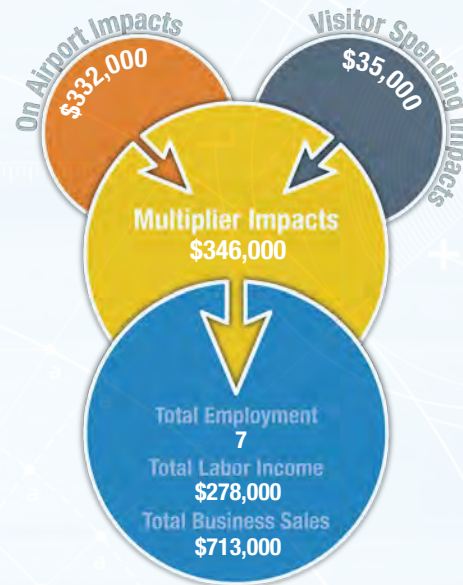
General Aviation Operations



Economic Impact

Downtown Fort Lauderdale Helistop is located in Broward County along Florida's Atlantic Coast, in the heart of downtown Fort Lauderdale. The helistop is situated on the rooftop of a downtown parking garage and can accommodate a variety of helicopters.

The helistop primarily supports personal, leisure, and business-related travel. The helistop also supports news reporting, aerial photography, law enforcement, and emergency medical aviation. This is the only helistop in the state, and with its unique and convenient location, it offers users access to Broward County's governmental, financial, educational, and cultural attractions.



Other Airport Characteristics

Due to its location in the middle of downtown Fort Lauderdale surrounded by skyscrapers, the helistop is often used as a filming location. Reservations for filming are required two weeks in advance.

Current and Future System Service Requirements/Recommendations

The City of Fort Lauderdale and the management staff of the Fort Lauderdale Executive Airport undertook a lengthy planning and public awareness process for the establishment of this facility with the purpose of improving access to the downtown business district for major corporations. The heliport also allows a staging platform for Broward County Sheriff's helicopters. This analysis indicates that the heliport is best suited for Recreational/Sport services, but that is contrary to the intended purpose of the facility. The heliport will provide corporate services, as intended, for the foreseeable future.

General Aviation Airport Role



Corporate



Tourism



Business/Recreational



FLORIDA DEPARTMENT OF TRANSPORTATION
AVIATION AND SPACEPORTS OFFICE
www.fdot.gov/aviation