

New Smyrna Beach Municipal Airport



FLORIDA DEPARTMENT OF TRANSPORTATION
AVIATION AND SPACEPORTS OFFICE

Airport: New Smyrna Beach Municipal
Airport (EVB)

City: New Smyrna Beach, Florida

County: Volusia County

Owner: City of New Smyrna Beach

Role: General Aviation Airport

Located in Volusia County, approximately 15 miles south of Daytona Beach and 55 miles north east of Orlando, New Smyrna Beach Municipal Airport serves many types of general aviation activities. With its three intersecting runways, the longest of which is 5,000 feet, the airport can accommodate mid-size GA aircraft. The airport's terminal is ideal for serving local users as well as those visiting the area.



Existing Facilities

New Smyrna Beach Municipal Airport is served by three runways: runway 7/25, runway 11/29, and runway 2/20. The longest runway is runway 7/25, measuring 5,000 feet long by 75 feet wide. Runway 11/29 measures 4,319 feet long by 75 feet wide and runway 2/20 measures 4,000 feet long by 100 feet wide. All runways are asphalt, and include full length parallel taxiways and RNAV GPS instrument approaches. Runways 7/25 and 11/29 also are equipped with precision approach path indicators. The airport has a 200 square foot administration building with 30 paved automobile parking spaces. Parking and storage at the airport is provided by six T-hangar buildings with 77 units, two executive hangars, and 13 conventional hangars, with an additional 70 tie-downs spaces. Two fixed base operators serve the GA needs of the airport: Airgate Aviation and Epic Aviation. The airport includes an air traffic control tower that is operational from 7:00am to 10:00pm, seven days a week. The current Airport Reference Code for the airport is B-II.

For more information, please visit Ormond Beach Municipal Airport's website at:

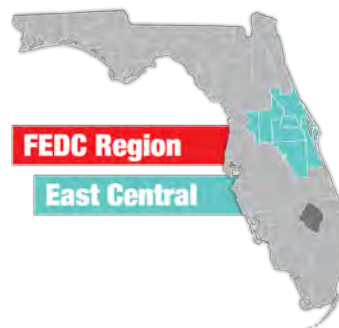
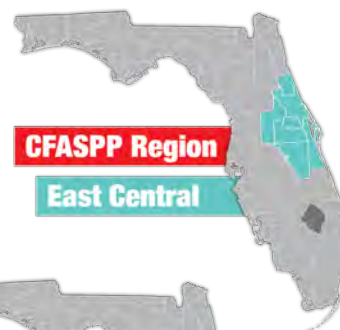
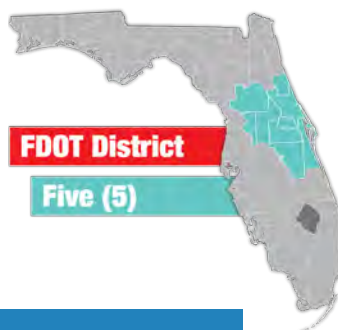
<https://www.cityofnsb.com/65/Airport>



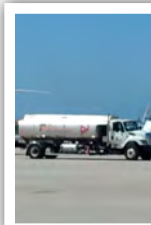
Airport Classification



**REGIONAL
ASSET
GENERAL
AVIATION AIRPORT**



Regional airports support regional economies by connecting communities to statewide and interstate markets. There are 492 Regional Asset airports nationwide and 30 within Florida, including New Smyrna Beach Municipal Airport. More information can be found in the Federal Aviation Administration's ASSET Studies at https://www.faa.gov/airports/planning_capacity/ga_study/.





Florida by the Numbers

Approximately half of all visitors arrive by air

- Florida's airports are often the first and last impression of our state

20 commercial service airports

- 4 large hubs; more than any other state
- Florida ranked second in the nation (2016) for airline passenger volume
- Serves approximately 10% of national passengers

109 general aviation airports

- 9 national ASSET airports
- 6% of general aviation aircraft fleet
- Leading number of pilot certificates in 4 categories

Largest U.S. gateway for Latin American air cargo

Home to the **SUN 'n FUN International Fly-in Expo**, one of the **largest general aviation expos in the world**

Community Service



New Smyrna Beach Municipal Airport supports the GA needs of the region and accommodates mid-size GA aircraft, including business jets. The airport is classified as a reliever airport for other airports in the region and is tasked with serving the non-commercial airline needs of the community. The main activity that occurs at the airport is flight training activity, with roughly 75 percent of the airport's annual operations related to such training. The two flight schools located on the airport employ 25 instructors and have 17 aircraft dedicated to flight training. Embry-Riddle Aeronautical University located nearby is a source of a great deal of the flight training activity at New Smyrna Beach Municipal. The airport also has a successful charter operation that conducts daily flights to the Bahamas. Air taxi operations account for less than one percent of the annual operations.

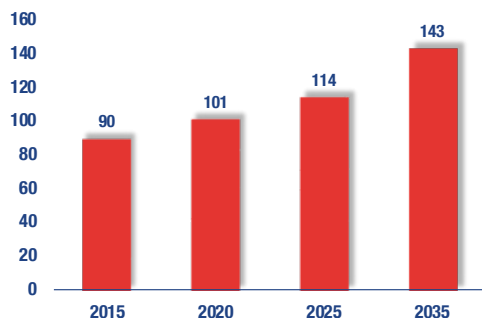
The airport is also utilized by business and leisure travelers. Airport management estimates that five percent of its annual GA operations are business related and that three percent of the airport's based aircraft are owned by local businesses. The airport is located close to local beaches, the Kennedy Space Center, and Central Florida attractions. In 2017, approximately 65 percent of operations were due to local aircraft, while about 35 percent of operations were due to transient aircraft. The airport also provides mosquito control for all of Volusia County, as well as firefighting during wild fires. There is an aircraft restoration business and two FBOs at the airport to serve local and visiting users.



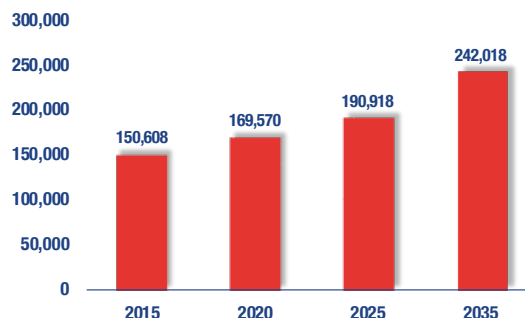
Current and Forecast Demand

The airport plays an important role in serving all facets of GA for the region. As of 2014, there were 90 based aircraft at the airport with the majority being single engine airplanes. Of the total based aircraft, approximately 50 percent of the aircraft are stored on paved tiedowns and the remaining 50 percent are in T-hangars or conventional hangars. Airport management presently reports a wait list for hangars that shows 50 aircraft. There were also 158,275 total annual operations in 2014. The largest plane that uses the airport on a regular basis is the Beech 1900.

Based Aircraft



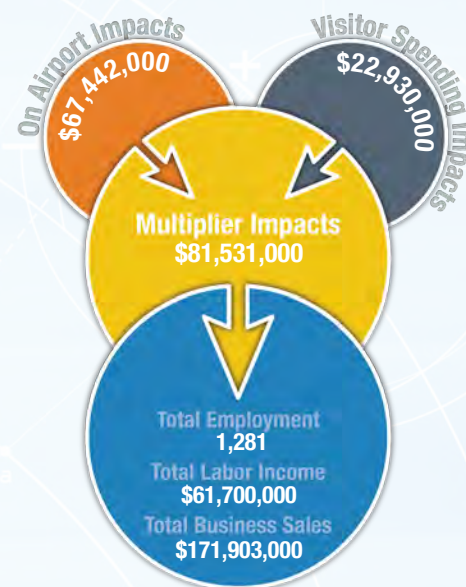
General Aviation Operations



Economic Impact

New Smyrna Beach Municipal Airport is located in Volusia County along Florida's Atlantic Coast, about 2 miles north of downtown New Smyrna Beach. The airport has three intersecting runways, with the longest running measuring 5,000 feet. The airport supports the general aviation needs of the region by accommodating mid-size general aviation aircraft.

The airport primarily supports recreational flying, business activity, agricultural spraying, and flight training. The airport also provides mosquito control for all of Volusia County as well as firefighting during wild fires. The airport's location is ideal for flight instructors to conduct flight training. The airport is also engaged in the local community and hosts the annual SkyFest Air Show, which features air shows, hot air balloons, helicopter rides, and aircraft displays.



Other Airport Characteristics

Business activity, flight training, mosquito control operations, charter flights, and recreational flying represent to most common activity at New Smyrna Beach Municipal Airport. The airport supports an industrial park to the south of the airfield. The industrial park encompasses 25 acres and is 50 percent occupied. The airport also engages with the local community by hosting the annual SkyFest Air Show, which brings in up to 50,000 visitors and features aerobatic demonstrations, hot air balloons, helicopter rides, and static aircraft displays. There are no military aircraft based at the airport and less than one percent of annual operations are due to transient military aircraft.

Current and Future System Service Requirements/Recommendations

The airport provides Flight Training, Business/Recreational (fire fighting, charter), Recreational/Sport, Corporate, and Tourism (CA) services. The airport plans to increase its corporate, flight training, and charter operations. The analysis indicates that the airport is best suited for providing Recreational/Sport, Tourism (CA), and, marginally, Flight Training. It received a low quotient in Corporate service because of the lack of an air traffic control tower and it received a low quotient in Business/Recreational because of its low Socioeconomic index.

General Aviation Airport Role



FLORIDA DEPARTMENT OF TRANSPORTATION
AVIATION AND SPACEPORTS OFFICE
www.fdot.gov/aviation