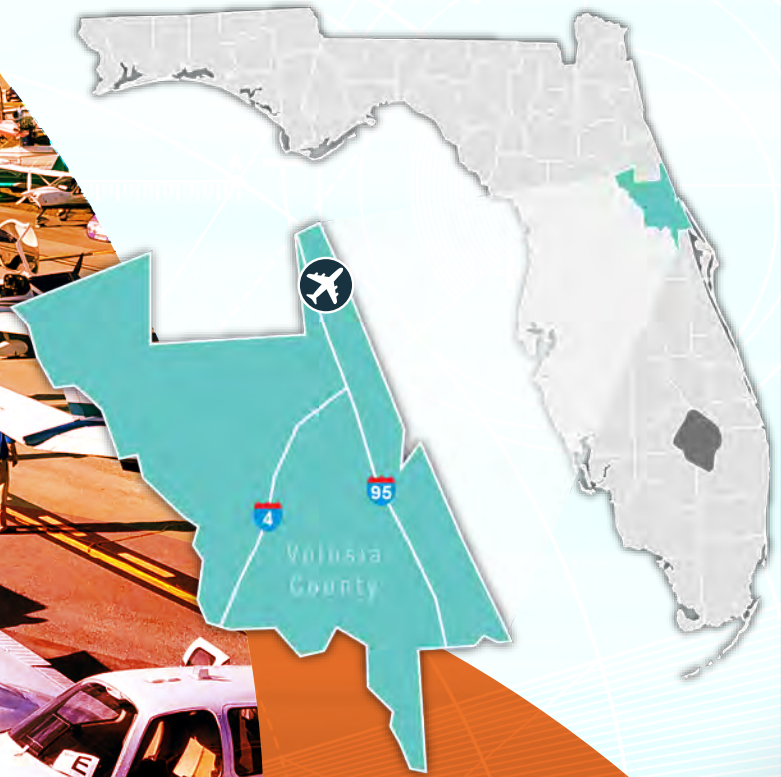


Ormond Beach Municipal Airport



FLORIDA DEPARTMENT OF TRANSPORTATION
AVIATION AND SPACEPORTS OFFICE

Airport: Ormond Beach Municipal
Airport (OMN)

City: Ormond Beach, Florida

County: Volusia County

Owner: City of Ormond Beach

Role: General Aviation Airport

Located in eastern Volusia County, Ormond Beach Municipal Airport serves many general aviation activities. With its two intersecting runways, the longest of which is 4,005 feet, the airport accommodates twin-engine GA aircraft. The airport's terminal is ideal for serving local users as well as those visiting the area.

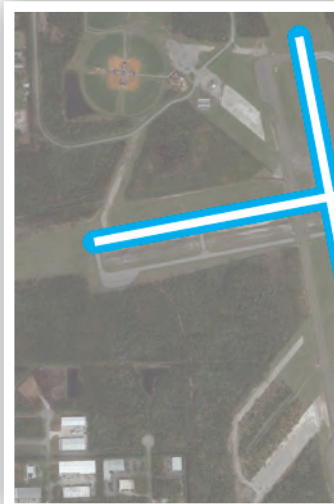


Existing Facilities

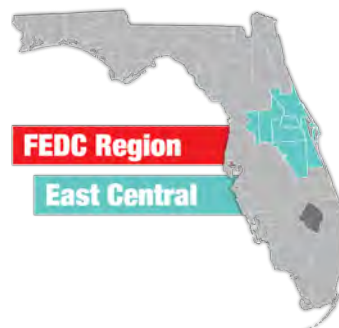
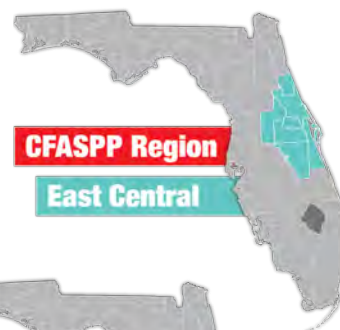
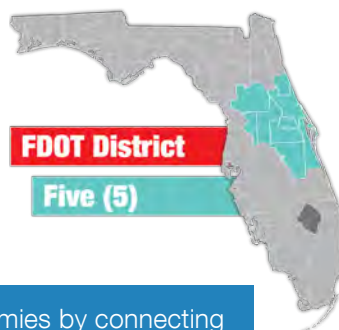
Ormond Beach Municipal Airport has two intersecting runways, runway 8/26 and runway 17/35, and a helipad, helipad H1. Runway 8/26 measures 4,005 feet by 75 feet and is equipped with precision approach path indicators, runway end indicator lights, and RNAV GPS instrument approaches. Runway 17/35 measures 3,704 feet by 100 feet and is equipped with precision approach path indicators, runway end indicator lights, and RNAV GPS and VOR instrument approaches. Both runways are asphalt in good condition and are served by partial parallel taxiways. There is a total of six taxiways at the airport and all are fully lighted. Helipad H1 is concrete, utilizes PERI edge lights, and measures 86 feet by 86 feet. The airport also has a 1,000-square foot passenger terminal building with 45 on-airport auto parking spaces. The airport's T-hangars and conventional hangars combine to provide 150 covered parking spaces for aircraft, with an additional 50 tie-downs spaces. There is also a newly constructed air traffic control tower at the airport, operational from 7:00am to 7:00pm, seven days a week.

For more information, please visit Ormond Beach Municipal Airport's website at:

<https://www.ormondbeach.org/77/Airport>



Airport Classification



Regional airports support regional economies by connecting communities to statewide and interstate markets. There are 492 Regional Asset airports nationwide and 30 within Florida, including Ormond Beach Municipal Airport. More information can be found in the Federal Aviation Administration's ASSET Studies at https://www.faa.gov/airports/planning_capacity/ga_study/.





Community Service



Ormond Beach Municipal Airport accommodates GA aircraft including business jet and recreational aircraft. The airport is classified as a reliever airport for other airports in the region and is tasked with serving the non-commercial airline needs of the community. Corporate and business activity has been steadily increasing at the airport over the years. The airport estimates that four percent of its annual GA operations are business-related and two percent of the airport's based aircraft are owned by local businesses. The main use of the airport, though, is flight training, which accounts for more than 80 percent of the air traffic at the airport. Three businesses provide flight training at the airport. These businesses employ 20 total flight instructors and have 31 aircraft dedicated to flight training. The airport is also utilized for crop spraying and the fixed base operator has initiated an innovative agricultural spraying curriculum into its flight training program.

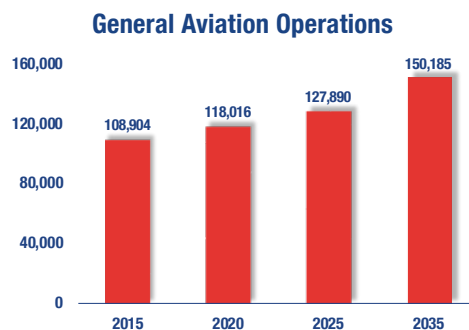
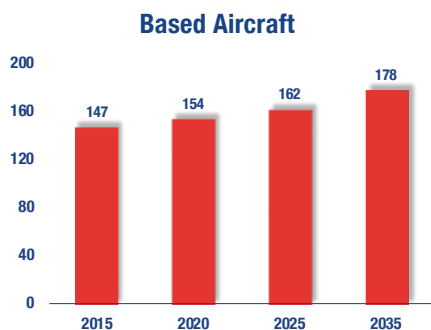
Ormond Beach Municipal also attracts many transient GA aircraft. In 2017, approximately 54 percent of annual operations were due to local aircraft, while about 46 percent of operations were due to transient aircraft. Located just southwest of the airport is the 176-acre Airport Business Park, which supports a mix of light industrial and commercial businesses. The park employs more than 1,500 people and provides more than 800,000 square feet of space.

To the north of the airport, located along US Highway 1 and I-95, is the ongoing Ormond Crossings development, a 3,000 acre live-work planned development that city officials estimate will eventually create 11,000 jobs and millions of dollars in economic impact. The airport is served by two fixed base operators: Sunrise Aviation and Tomlinson Aviation. Each offers various aviation services such as 100LL and Jet A fuel, aircraft maintenance, paint and upholstery shops, charter flights, and flight instruction.



Current and Forecast Demand

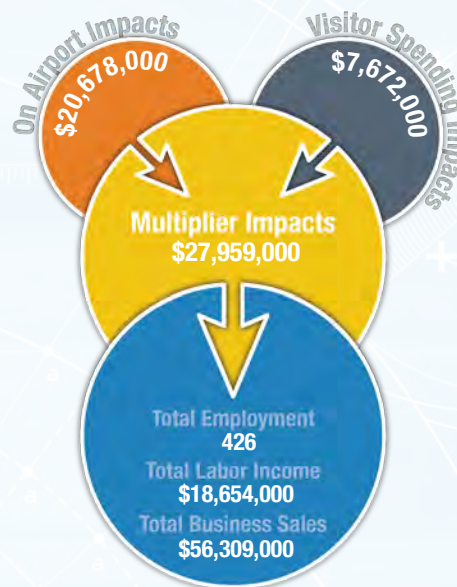
Ormond Beach Municipal Airport plays an important role in serving all facets of GA. As of 2014, there were 97 based aircraft at the airport with the majority being single-engine airplanes. Of the total based aircraft, approximately 12 percent are stored on paved tie-downs and 88 percent are in T-hangars or conventional hangars. The airport also had 109,447 total annual operations as in 2014. The largest plane that uses the airport on a regular basis is the Cessna Citation. The current Airport Reference Code for the airport is B-II.



Economic Impact

Ormond Beach Municipal Airport is located in Volusia County along Florida's Atlantic Coast, approximately eight miles north of Daytona Beach. The airport has two intersecting runways, with the longest runway measuring 4,004 feet.

The airport primarily supports recreational flying, business activity, and flight training. Due to its proximity to pristine beaches, the airport also supports considerable corporate and executive traffic. The airport is also conveniently located to serve many of the local business owners in the area. Companies at the nearby industrial park utilize their proximity to the airport, including a large international flight school, which accounts for more than 80% of the traffic at the airport. The airport also hosts large national defense trainings, which attract approximately 80 people and significant revenue.



Other Airport Characteristics

Flight training is a major source of operations at Ormond Beach Municipal, with airport management estimating that upwards of 80 percent of aircraft traffic is due to training activity. Additionally, management expect business and corporate aviation activity to continue to grow. The airport was originally established as a naval aviation training field in 1943. The airport does not have any based military aircraft, yet, it does accommodate some transient military operations that account for less than one percent of the total annual activity. The airport also has hosted large national defense activities and emergency services exercises.

Current and Future System Service Requirements/Recommendations

The airport provides Flight Training, Tourism (CA) and Recreational/Sport (experimental) services. The airport plans to increase its flight training, recreational and charter operations. The analysis indicates that the airport is best suited for providing Flight Training, Tourism (CA) and Recreational/Sport services.

General Aviation Airport Role



FLORIDA DEPARTMENT OF TRANSPORTATION
AVIATION AND SPACEPORTS OFFICE
www.fdot.gov/aviation