

George T Lewis Airport



FLORIDA DEPARTMENT OF TRANSPORTATION
AVIATION AND SPACEPORTS OFFICE

Airport: George T. Lewis Airport
(CDK)

City: Cedar Key, Florida

County: Levy County

Owner: Levy County

Role: General Aviation Airport

Located in Levy County along the Gulf Coast, approximately 60 miles southwest of Gainesville, George T. Lewis Airport serves the general aviation needs of the local community. With its single 2,355-foot runway, the airport can accommodate small single-engine general aviation aircraft.



Existing Facilities

Facilities at George T. Lewis Airport are minimal and there are no taxiways or automobile parking spaces. The airport has one runway, runway 05/23, paved with asphalt. The runway has medium intensity edge lights and measures 2,355 feet long by 100 feet wide. There is also an aircraft parking ramp at the airport that has approximately six tie-down spaces.

For more information, please visit CDK's website at:

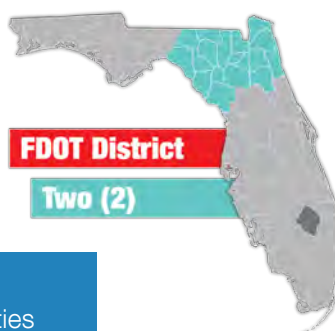
<http://www.cedarkeyairport.org/airport-info.html>



Airport Classification

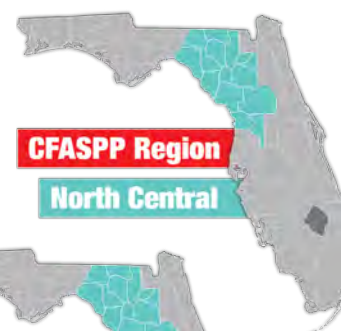


**BASIC
ASSET
GENERAL
AVIATION AIRPORT**



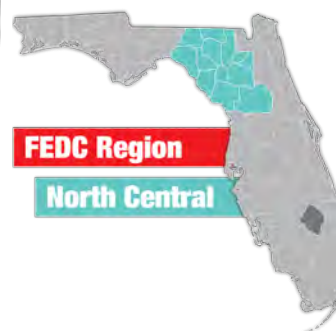
FDOT District

Two (2)



CFASPP Region

North Central



FEDC Region

North Central

Basic airports link the community with the national airport system and support activities such as emergency services, charters, cargo, flight training, and personal flying). There are 840 Basic Asset airports nationwide and 11 within Florida, including George T. Lewis Airport. More information can be found in the Federal Aviation Administration's ASSET Studies at https://www.faa.gov/airports/planning_capacity/ga_study/.





Community Service

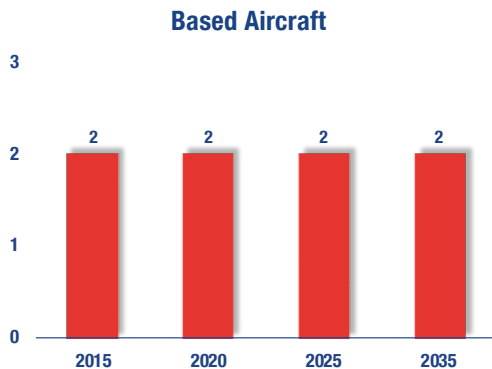


George T. Lewis Airport accommodates GA aircraft and activities for Cedar Key Island and is surrounded by water on all sides. The airport supports mainly those traveling to the island for long weekends or for annual community events such as the Arts Festival and the Seafood Festival. For the 12-month period ending on December 12, 2017, approximately 75 percent of all operations were attributable to visiting aircraft while 25 percent were due to local aircraft. Another main activity that occurs at the airport is recreational flying. The airport is also occasionally used for business flights and business travel makes up about 20 percent of the airport's annual operations. There are currently no corporate based aircraft at the airfield.



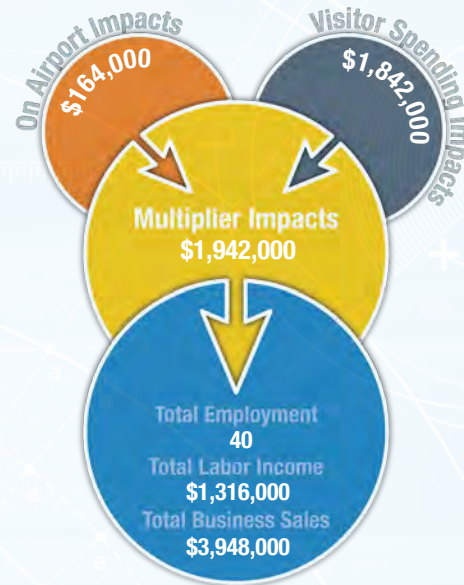
Current and Forecast Demand

George T. Lewis Airport serves the basic needs of general aviation for the community. As of 2014, there were 4 based aircraft and 4,000 total operations at the airport. The based aircraft are all single-engine airplanes. The largest plane that uses the airport is a Cessna 172. Historic and forecast FDOT aviation activity information on file for the George T. Lewis Airport is as follows:



Economic Impact

George T. Lewis Airport is located in Levy County on Cedar Key Island, approximately 135 miles north of Tampa. The airport has one runway measuring 2,355 feet. The airport accommodates small general aviation aircraft and serves the general aviation needs of the local community. The airport supports individuals traveling to the island for long weekends or for annual community events such as the Arts Festival and the Seafood Festival. The airport primarily supports recreational flying but also frequently supports business activity and military trainings as well.



Other Airport Characteristics

George T. Lewis Airport is primarily used by transient aircraft and for recreational flying. Military training operations and business activity also occasionally occur at the airport.

Current and Future System Service Requirements/Recommendations

The airport currently serves primarily recreational/sport activity, with a moderate amount of business-related activities. There are currently no flight training or military activities on the airport. Except for the runway safety project, there are no planned improvements for the airport; however, management does expect increased use for recreational/sport activities, with the potential for development of additional service facilities and improved safety overruns. Current conditions will limit the airport to primarily serving recreational/sport activities in the future, with the potential for business/recreational use or service facilities over the planning period.

General Aviation Airport Role



Tourism



Recreational/Sport



FLORIDA DEPARTMENT OF TRANSPORTATION
AVIATION AND SPACEPORTS OFFICE
www.fdot.gov/aviation