

Pompano Beach Airpark



FLORIDA DEPARTMENT OF TRANSPORTATION
AVIATION AND SPACEPORTS OFFICE

Airport: Pompano Beach Airpark
(PMP)

City: Pompano Beach, Florida

County: Broward County

Owner: City of Pompano Beach

Role: General Aviation Airport

Located in Broward County, approximately one mile northeast of Pompano Beach City Hall, Pompano Beach Airpark serves a multitude of general aviation activities. With its three intersecting runways, the longest of which is 4,918 feet, the airport can accommodate all single and light twin engine aircraft including midsize business jets. The Fixed Base Operator offers a modern terminal facility that is ideal for serving local airport users as well as those visiting the area.



Existing Facilities

Pompano Beach Airpark features three runways: runway 15/33 (4,918 feet by 150 feet), runway 6/24 (4,001 feet by 150 feet), and runway 10/28 (3,502 feet by 100 feet). All three runways are paved with asphalt and are equipped with medium intensity edge lights and precision approach path indicators. Additionally, runways 15/33 and 6/24 are equipped with RNAV GPS instrument approaches, while the runway 15 end has a LOC/DME precision instrument approach and 1,400-foot-long medium intensity approach lighting system. Other facilities at the airport include a 4,300 square-foot administration building and an air traffic control tower, which is attended daily from 7:00am to 9:00pm. The airport's full service fixed base operator is housed in a 7,500 square-foot terminal where it provides a full range of GA services. There are approximately 105 tie-downs and 160 spaces in conventional and T-hangars for aircraft at the airport. There is also 100 LL Avgas and JET-A fuel available. The airport is also home to a 32.5-acre blimp base, leased by Goodyear.

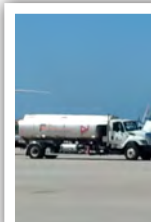
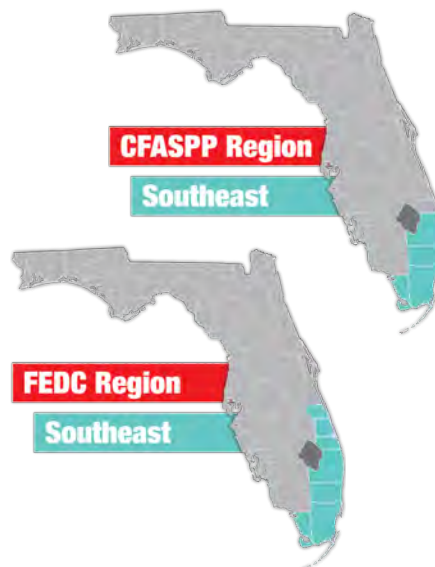
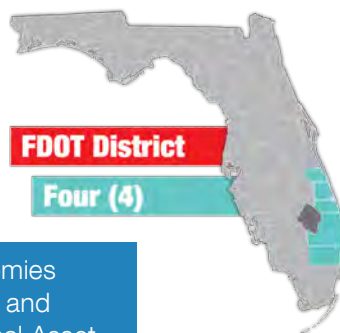
For more information, please visit PMP's website at:
http://pompanobeachfl.gov/pages/pw_airpark/airport



Airport Classification



Regional airports support regional economies by connecting communities to statewide and interstate markets. There are 492 Regional Asset airports nationwide and 30 within Florida, including Pompano Beach Airpark. More information can be found in the Federal Aviation Administration's ASSET Studies at https://www.faa.gov/airports/planning_capacity/ga_study/.





Community Service

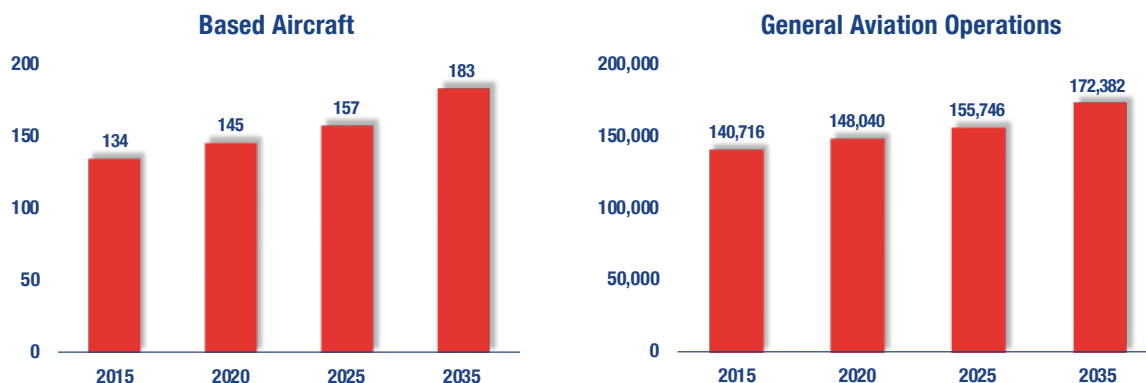


Pompano Beach Airpark currently serves the GA needs of the region. Flight training is the most common activity at the airport and makes up about 60 percent of annual operations. There are three flight schools located at the airport which include approximately 30 based aircraft. Local GA pilots also regularly utilize the airport for recreational and sport flying. The airport's is also a popular location business and corporate activity. In addition to aviation facilities, Pompano Beach Airpark property also includes a municipal golf course, swimming pool, baseball stadium, tennis facility, bike path, fitness trail, community park, and an amphitheater. The east side of the airport property is home to a wastewater treatment facility and other municipal buildings. Other activities that occur at the airport include aerial photography, search and rescue operations, and emergency medical aviation. Air taxi and charter operations also occur at the airport and account for about one percent of the airport's annual operations.



Current and Forecast Demand

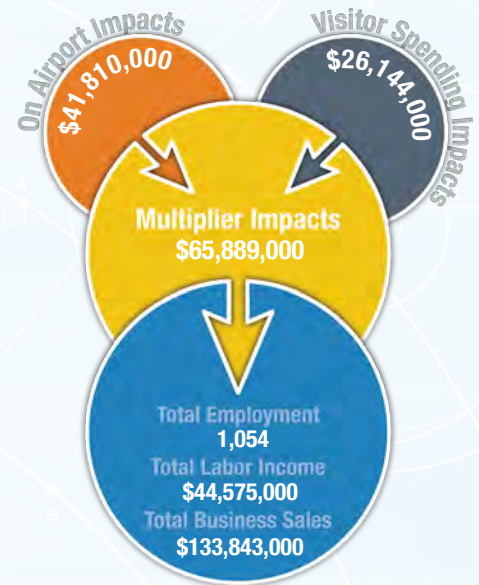
According to Florida Aviation System Plan data, as of 2014, there were 74 aircraft based at Pompano Beach Airpark. During the same time period, there were approximately 841 commercial operations and 132,964 GA operations, resulting in 133,805 total annual operations. For the 12-month period ending on May 26, 2017, approximately 69 percent of all operations were attributable to local general aviation while 31 percent were due to transient general aviation. Of the based aircraft, the majority are single-engine airplanes with the remaining being multi-engine airplanes, jet airplanes, and helicopters. The largest aircraft that use the airport frequently are Cessna 421s and the current Airport Reference Code is B-II. Historic and forecast FDOT aviation activity information on file for Pompano Beach Airpark is as follows:



Economic Impact

Pompano Beach Airpark is in Broward County, approximately one mile northeast of Pompano Beach's central business district. The airpark has three runways, with the longest runway measuring 4,918 feet. The airport accommodates mid-size general aviation business jet aircraft and serves a variety of general aviation activities for local and transient users.

The airport primarily supports recreational flying, including parachuting, but also provides a multitude of other general aviation services, including aircraft rental, air taxi and charter services, aerial photography, mapping and surveying, and storage hangars. Several flight schools are supported by the airport, which provide flight training for new pilots, commercial pilots, or for a Federal Aviation Administration (FAA) knowledge test. The airport also supports local search and rescue and emergency medical aviation efforts. The airport is engaged with the community and contributes to the preservation of open space in the area, as well as providing community amenities, such as a municipal swimming pool, baseball stadium, and golf course.



Other Airport Characteristics

Pompano Beach Airpark is mainly utilized for GA recreational flying, business activity, and flight training. There are no military aircraft based at the airport but transient military aircraft account for about one percent of the annual operations. The airport also plays a role in the preservation of local open space. The Good Year Airship Operations bases its "Wingfoot One" dirigible (blimp) at the airport and maintains a hangar capable of storing two fully inflated blimps.

Current and Future System Service Requirements/Recommendations

The airport is preparing to take on some exciting opportunities over the next few years. Currently the airport is conducting an airport master plan update, which will identify many new programs and projects. Recent projects at the airport include construction of a new full length parallel taxiway (Golf) to the main runway 15-33, relocation and replacement of Taxiway Kilo, and the extension and rehabilitation of runway 15-33. As part of this runway rehabilitation, NAVAID upgrades such as MALS were installed. The airport's FBOs have also built more than 40,000 square feet of bulk storage hangars. Currently one of the tenants is constructing a new 10,000 square foot building for a large flight school on the airfield. Analysis indicates that the airport is limited by financial conditions, zoning challenges on available land use for further expansion as well as existing runway length. Therefore, the airport is most appropriate for continued service as a flight training and recreational/sport and business purposes.

The airport's financial situation has improved since October 2007. The FAA and the City have entered into an agreement which will allow for non-aviation land use of certain parcels for City purposes. Revenues have been deposited into a capital improvement account of the Air park Enterprise Fund. These funds are specifically targeted for aviation development recommended by the FAA. The City has become eligible to receive both FAA AIP and FDOT grant funding, therefore increasing the airport's value to the system.

General Aviation Airport Role



FLORIDA DEPARTMENT OF TRANSPORTATION
AVIATION AND SPACEPORTS OFFICE
www.fdot.gov/aviation