

# Palm Beach County Park Airport



FLORIDA DEPARTMENT OF TRANSPORTATION  
AVIATION AND SPACEPORTS OFFICE

**Airport:** Palm Beach County Park  
Airport (LNA)

**City:** West Palm Beach, Florida

**County:** Palm Beach

**Owner:** Palm Beach County

**Role:** General Aviation Airport



Located in Palm Beach County, approximately six miles south of West Palm Beach, Palm Beach County Park primarily serves recreational/sport and training aircraft, as well as business/corporate general aviation activities. With its three intersecting runways, the longest of which is 3,489 feet, the airport can accommodate small multi-engine general aviation aircraft. The airport's terminal is ideal for serving local users as well as those visiting the area.



## Existing Facilities

Palm Beach County Park Airport is served by three runways: runway 10/28 (3,489 feet by 75 feet), runway 16/34 (3,421 feet by 100 feet), and runway 4/22 (3,256 feet by 75 feet). All three runways are paved with asphalt in fair to good condition and are equipped with medium intensity edge lights and precision approach path indicator lights. Additionally, runway 34 is equipped with an RNAV GPS instrument approach. The airport has 646,000 square feet of paved apron space, 52 conventional hangars, multiple tie-down areas, and a few T-hangars to accommodate aircraft parking and storage. The airport is served by a single fixed base operator, Stellar Aviation, who provides a full range of general aviation services and amenities.

For more information, please visit LNA's website at:

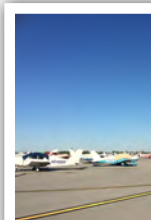
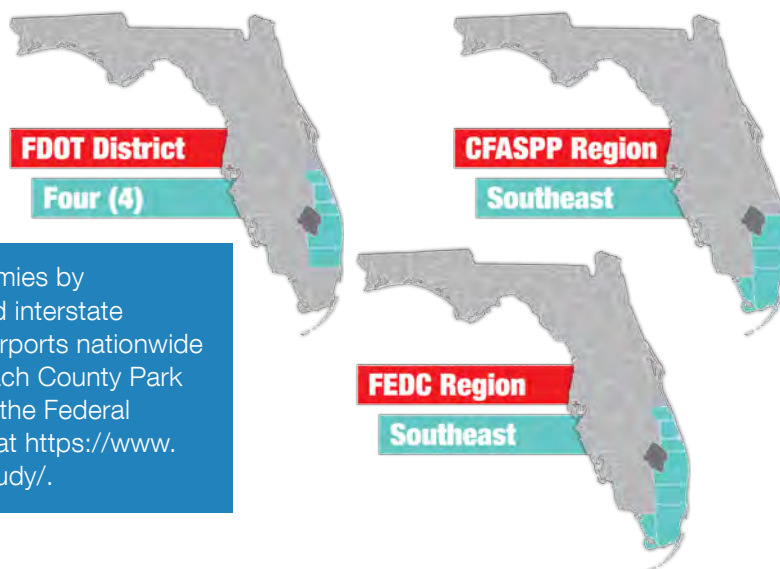
<http://www.pbia.org/about/general-aviation/park-airport/>

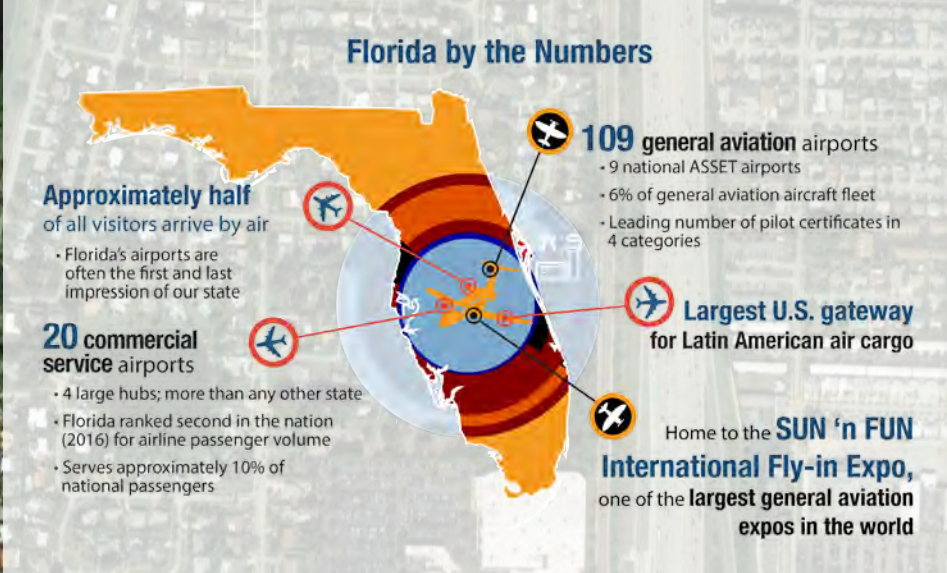


## Airport Classification



Regional airports support regional economies by connecting communities to statewide and interstate markets. There are 492 Regional Asset airports nationwide and 30 within Florida, including Palm Beach County Park Airport. More information can be found in the Federal Aviation Administration's ASSET Studies at [https://www.faa.gov/airports/planning\\_capacity/ga\\_study/](https://www.faa.gov/airports/planning_capacity/ga_study/).



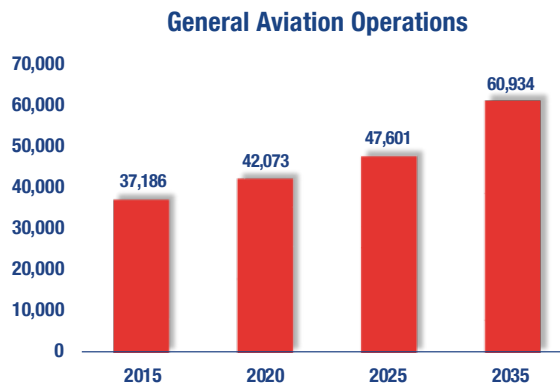
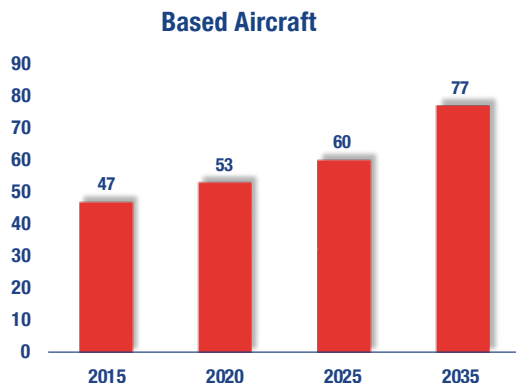


Palm Beach County Park Airport is a general aviation facility that focuses on serving single- and twin-engine general aviation propeller aircraft. The most common aviation activities at the airport are sport/recreational flying and flight training. The airport is home to five flight training businesses, including a helicopter pilot training firm. The airport is also home to no fewer than 15 other tenant businesses that provide a variety of aviation related services, including aircraft maintenance and repair, aircraft painting, banner towing and avionics installation. A Civil Air Patrol squadron is also based at the airport. The airport also acts as a staging area during natural disasters, support medevac and air ambulance operations, and has an Army radar station. The airport's manmade and environmental restrictions mean that future expansion to serve larger aircraft is unlikely.



## Current and Forecast Demand

According to Florida Aviation System Plan data, in 2014 there were 294 aircraft based at Palm Beach County Park Airport. During the same time period, there were approximately 2,000 commercial operations and 124,750 general aviation operations, resulting in 126,750 total operations. For the 12-month period ending on January 26, 2017, 75 percent of all operations were local general aviation, 23 percent were transient general aviation, two percent were air taxi operations, and less than one percent were military operations. The current airport reference code for Palm Beach County Park Airport is B-II.

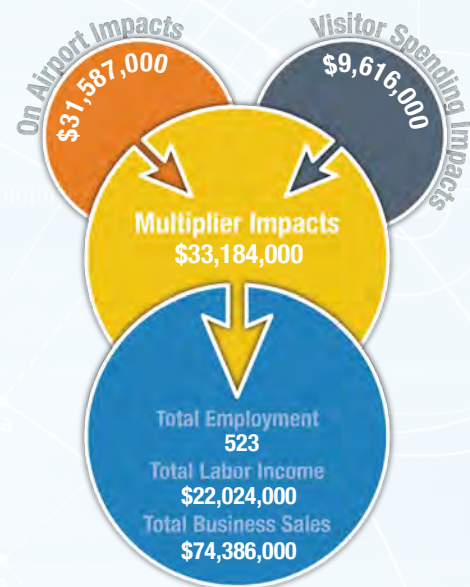




# Economic Impact

Palm Beach County Park Airport is located approximately eight miles south of downtown West Palm Beach. The airport has three intersecting runways, with the longest runway measuring 3,489 feet. The airport accommodates general aviation aircraft and serves both local and transient users.

The airport primarily supports recreational flying, business activity, and flight training. The airport also supports agricultural spraying, cargo activity, aerial photography, and emergency medical aviation. Flight instructors use the airport to conduct flight trainings, and the airport provides aircraft maintenance and low priced fueling for users. The airport helps serve the region by offering support during natural disasters and transporting supplies and volunteers to impacted areas. The airport also assists in banner towing and flying blimps in the local region.



## Other Airport Characteristics

The airport had its most recent Master Plan and Airport Layout Plan (ALP) completed in 2006. Based on the Airport Master Plan recommendations, future development projects have been identified and include:

1. Development of the area west of runway 03/21 for use as general aviation expansion/FBO location
2. Development of non-aviation areas on west side of airport

Recently completed projects include the installation of 59 new airfield location and guidance signs aimed at increasing safety and awareness on the airport. Also, the airfield electrical vault has recently been renovated and updated to include an emergency generator.

## Current and Future System Service Requirements/Recommendations

The airport reports that all aviation activity currently occurs on the south side of the airfield as there is not currently any developed areas on the north, east and west sides of the airport. There are areas for future development, non-aviation commercial activity, on the west side. The airport currently caters to small single and multi-engine piston and turboprop aircraft and serves as a reliever for Palm Beach International training activities. The analysis indicates that the airport received low quotients in available acreage, financial conditions, and runway length limiting the viability of significant expansion. However, due to the availability of non-precision approach, the airport is suited to continue in its current role of supporting flight training, recreational/sport and business/recreational activities.

### General Aviation Airport Role



FLORIDA DEPARTMENT OF TRANSPORTATION  
AVIATION AND SPACEPORTS OFFICE  
[www.fdot.gov/aviation](http://www.fdot.gov/aviation)