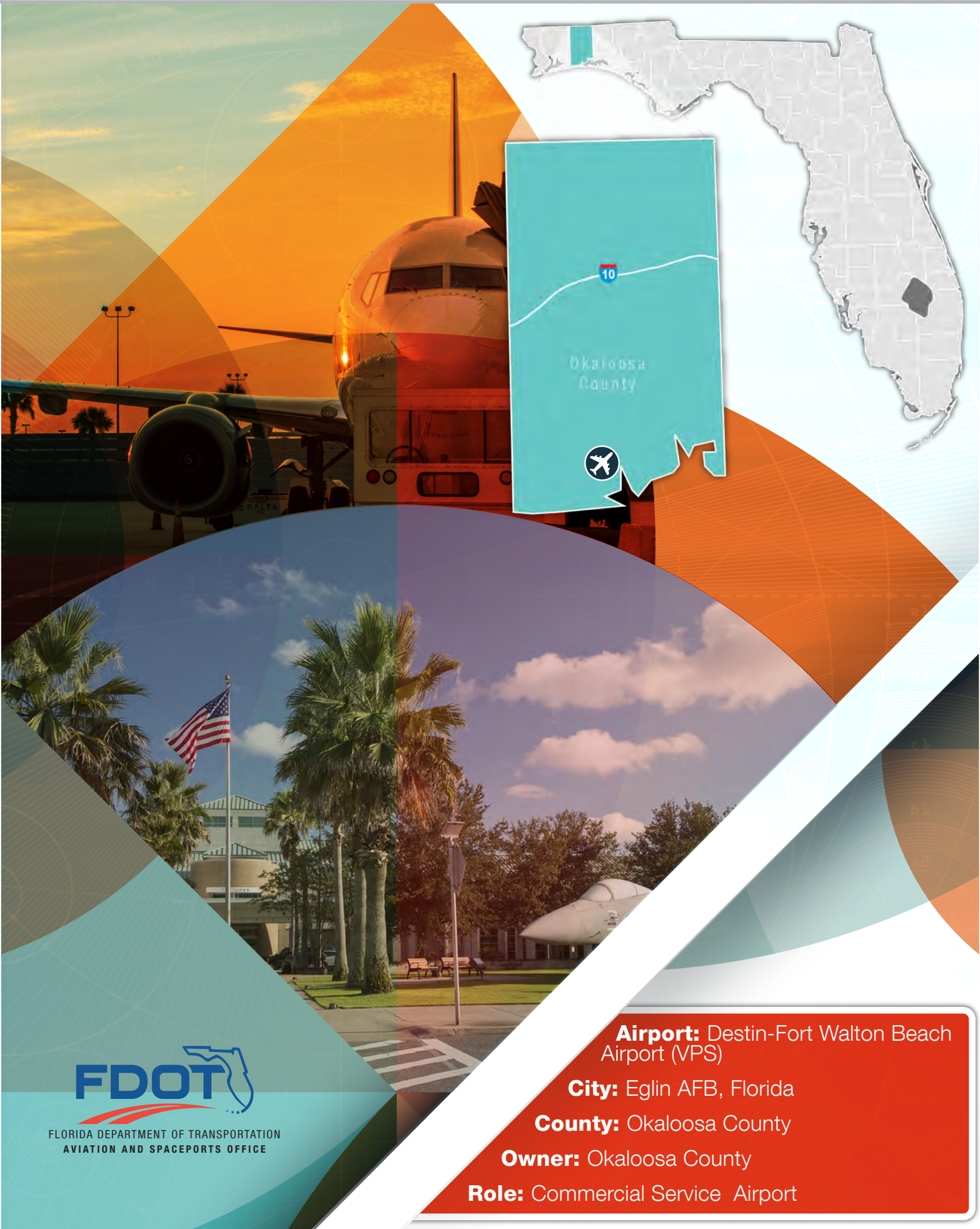


Destin - Ft. Walton Beach Airport



FLORIDA DEPARTMENT OF TRANSPORTATION
AVIATION AND SPACEPORTS OFFICE

Airport: Destin-Fort Walton Beach
Airport (VPS)

City: Eglin AFB, Florida

County: Okaloosa County

Owner: Okaloosa County

Role: Commercial Service Airport

Destin-Fort Walton Beach Airport is located in Okaloosa County on Florida's Panhandle, approximately one mile southwest of Valparaiso. The airport has two active runways, the longest of which is 11,987 feet. Facilities at the airport are shared with Eglin Air Force Base.



Existing Facilities

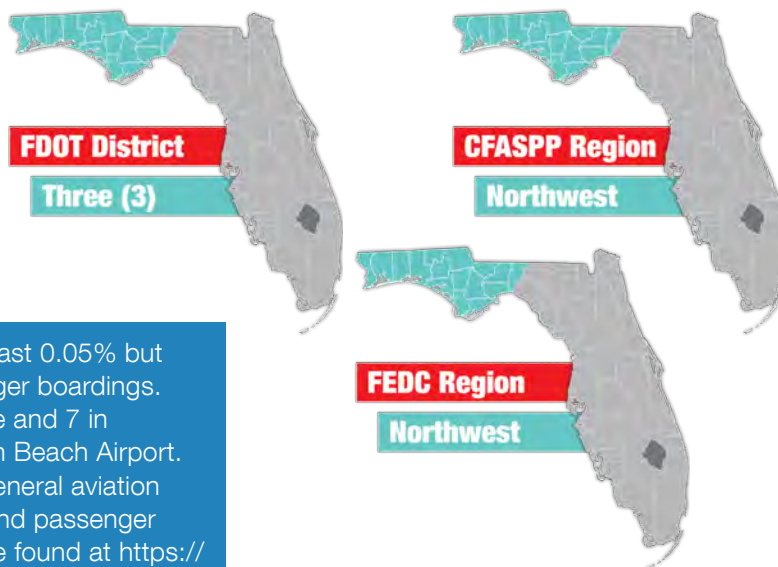
Destin-Fort Walton Beach Airport is served by two runways, which it shares with Eglin Air Force Base. The first runway, runway 12/30, is 11,987 feet long by 300 feet wide, paved with concrete and asphalt in excellent condition. The second runway, runway 1/19, is 10,001 feet long by 300 feet wide, paved with asphalt. Both runways feature high intensity edge lights, PAPI visual slope indicators, and a full range of instrument approaches.

The terminal building at Destin-Fort Walton Beach, opened in 2004, is a two-level, eight-gate, 116,000 square foot facility that can accommodate commercial aircraft as large as the Airbus A320 and the Boeing 757. The terminal building provides passengers with the full range of amenities one would expect at a commercial service airport, such as restaurants, shops, conference space, free Wi-Fi, and car rentals.

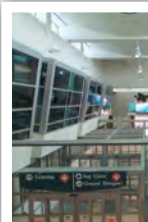
For more information, please visit VPS's website at:
<https://www.flyvps.com/>



Airport Classification



Small Hub airports account for at least 0.05% but less than 0.25% of national passenger boardings. There are 72 Small Hubs nationwide and 7 in Florida, including Destin-Fort Walton Beach Airport. Small Hub airports typically serve general aviation operations blended with air cargo and passenger operations. More information can be found at https://www.faa.gov/airports/planning_capacity/npas/.





Florida by the Numbers



Community Service



Located along Northwest Florida's Emerald Coast, Destin-Fort Walton Beach is the fastest growing commercial service airport in the state of Florida in 2017 and one of the fastest growing in the entire country. In recent years, the airport has added over 20 direct flights while passenger enplanements have risen over 60 percent since 2013, with the airport surpassing the one million passenger threshold for the first time in 2017. The Emerald Coast is home to miles of beautiful white-sand beaches that attract millions of visitors each year, making Destin-Fort Walton Beach Airport the primary gateway for tourists flying into the area. Through a Joint Use Agreement, Destin-Fort Walton Beach Airport is co-located on Eglin Air Force Base, the largest military installation in the United States where the Air Force develops and tests all of its air-delivered non-nuclear weapons. In addition, numerous other military facilities are located on or around Eglin property, including Hurlburt Field (headquarters of Air Force Special Operations Command), Duke Field, Camp Rudder (site of the final phase of US Army Ranger School), and the headquarters of the US Army 7th Special Forces Group. This large military presence has resulted in a concentration of defense contractors, high tech firms, and research facilities in the airport's market area. These companies, as well as travelling servicemembers, depend on Destin-Fort Walton Beach Airport for commercial airline service. Because of its location on a major military installation, Destin-Fort Walton Beach Airport is strictly a commercial service

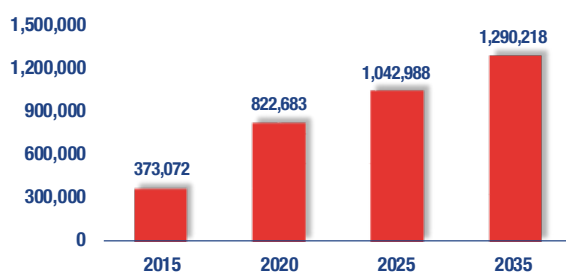
airport. Only a small fraction of a percentage of its annual overall operations are attributable to heavily regulated, pre-approved general aviation operations. The airport's primary role is to serve as a commercial airline hub for the Northwest Florida region between Pensacola and Panama City.



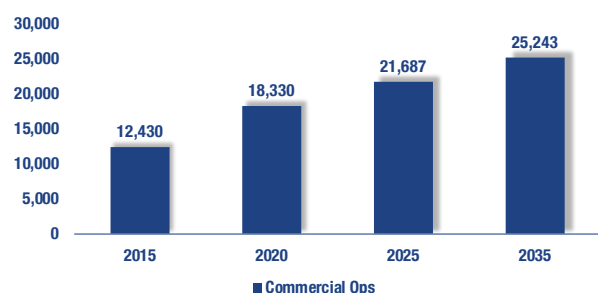
Current and Forecast Demand

According to Florida Aviation System Plan data, in 2014 there were 12,856 commercial operations at Destin-Fort Walton Beach Airport. There are three aircraft based at the airport. Destin-Fort Walton Beach Airport offers commercial airline service from four airlines: Allegiant, American Airlines, Delta, and United. Through these airlines, year-round non-stop flights are offered to Dallas, Charlotte, Washington DC, Atlanta, Cincinnati, St. Louis, and Houston, while seasonal non-stop flights are offered to over twenty more US cities.

Enplanements



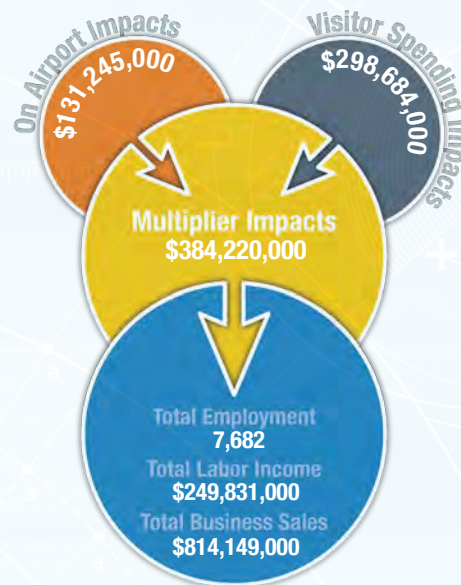
Operations



Economic Impact

Destin - Fort Walton Beach Airport is in Okaloosa County along Florida's Gulf Coast, approximately one mile east of Destin. The airport has one runway, measuring 5,001 feet. The airport accommodates multi-engine general aviation aircraft and serves several types of general aviation activities for local and visiting users.

The airport mainly supports tourist, recreational, public charter, flight training, and business activity. The airport has a partnership with the Eglin Air Force Base and is considered a leading example of a "Joint Use Airport," which indicates an airport owned by the Department of Defense, at which both military and civilian aircraft make shared use of the airfield. The airport added 30% more passengers in 2017 and is currently the fastest growing airport in Florida and one of the fastest growing airports in the country. The airport provides 50 non-stop flights daily and direct service to 27 cities, which contributes to tourism revenue in the region.



Other Airport Characteristics

With its rapidly growing commercial service profile, Destin-Fort Walton Beach Airport has recently completed several significant improvement projects, including a terminal floor upgrade, added capacity with a third TSA checkpoint lane, and construction of a \$3.8 million Aircraft Rescue and Fire Fighting Facility. Additional projects on the horizon include upgrading and modernizing the airport's baggage claim area and baggage handling system expansion, a master plan update, fuel farm expansion, taxiway rehab, commercial apron expansion, and concourse and gate expansions. The airport's success and continued growth in collaboration with Eglin AFB have positioned it as a model joint use facility.

Current and Future System Service Requirements/Recommendations

It is assumed that this airport will continue to provide tourism and business services and has the capability to provide increased levels of both services in the future. It should be noted that the airport resides on Eglin AFB and the County (sponsor) only controls a small portion of the actual airfield. The Joint Use Agreement between the County and the Air Force will allow for growth in commercial services, but prohibits civilian general aviation use of the field. Therefore, no service categories under Community Airports were considered.

Commercial Service Role



FLORIDA DEPARTMENT OF TRANSPORTATION
AVIATION AND SPACEPORTS OFFICE
www.fdot.gov/aviation