

Tampa International Airport



FLORIDA DEPARTMENT OF TRANSPORTATION
AVIATION AND SPACEPORTS OFFICE

Airport: Tampa International Airport (TPA)

City: Tampa, Florida

County: Hillsborough County

Owner: Hillsborough County Aviation Authority

Role: Commercial Service Airport

Tampa International Airport is located on Florida's West Coast. The airport has three active runways, the longest of which is 11,002 feet. Facilities at the airport are capable of supporting a full range of commercial aircraft.



Existing Facilities

Tampa International Airport is served by three runways. Runway 1L/19R (11,002 feet by 150 feet) and runway 1R/19L (8,300 feet by 150 feet) are parallel to each other in a north south direction, while runway 10/28 (6,999 feet by 150 feet) is oriented east-west. All three runways are equipped with high intensity edge lights, precision approach path indicator lights, and RNAV GPS instrument approaches. Runways 1L/19R and 1R/19L are also equipped with a variety of precision instrument approaches. Additionally, runway end 19R has a 1,400-foot long medium intensity approach lighting system, while runway ends 1L and 19L each have 2,400-foot long high intensity approach lighting systems. All runways are served by a network of full-length paved parallel taxiways. There is also an air traffic control tower that is attended 24/7, as well as an aircraft rescue and firefighting station and training area.

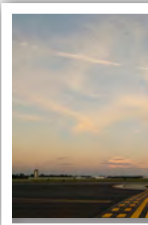
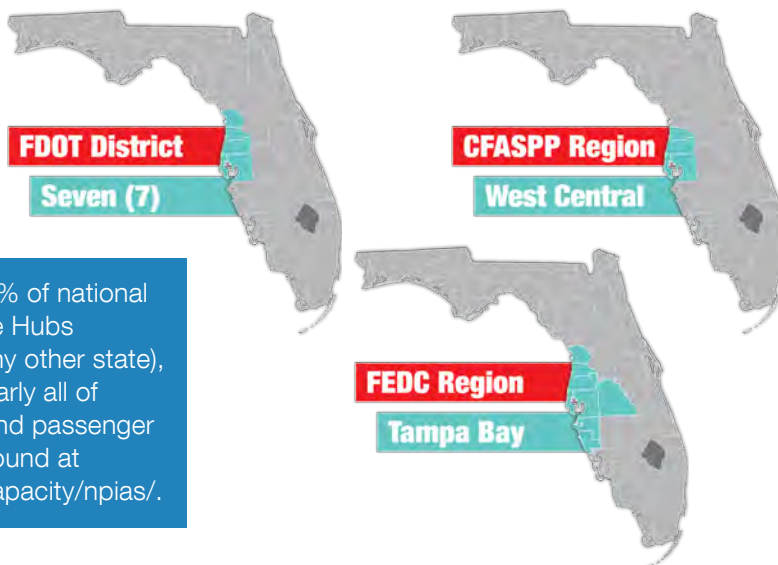
Located between the parallel north-south runways is Tampa International Airport's main passenger terminal. This three-level terminal has approximately 1.94 million square feet of space and 59 gates, as well as extensive passenger amenities and a 300-room hotel. The terminal also features a six-level, 3,324 space short term automobile parking garage and a seven-level, 6,807 space long term parking garage. South of the main terminal is the South Terminal Support Development Area. This location, accessed from the main terminal via a 1.3-mile long automated people mover, has an additional 11,290 automobile parking spaces, as well as rental car facilities and taxi and bus staging areas. The airport's 415-acre Eastside Development Area is home to both air cargo and maintenance facilities. General aviation facilities, including the airport's two FBOs, Signature Flight Support and Sheltair, are located in the southeastern quadrant of the airfield.

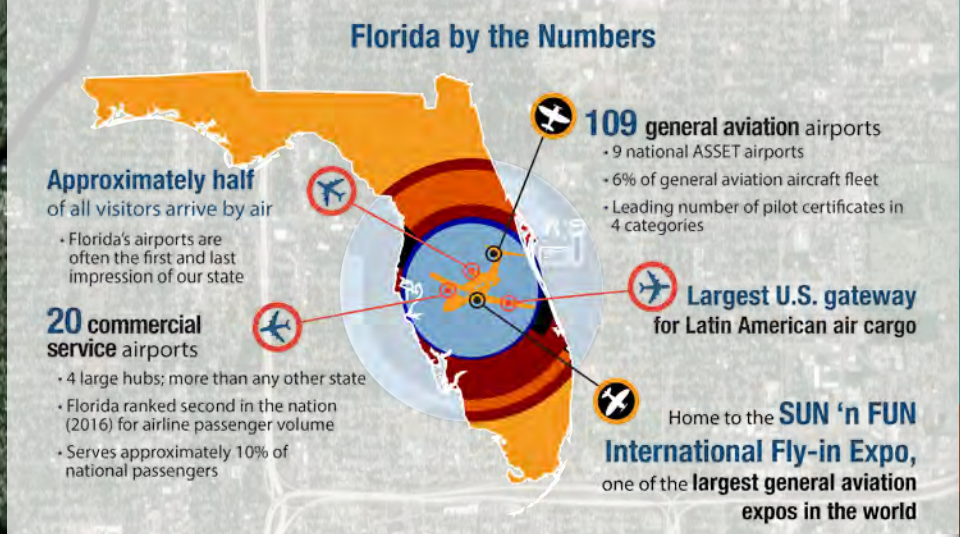
For more information, please visit TPA's website at: <http://www.tampaairport.com/>

Airport Classification



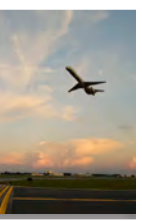
Large Hub airports account for at least 1% of national passenger boardings. There are 30 Large Hubs nationwide and 4 in Florida (more than any other state), including Tampa International Airport. Nearly all of Large Hub airport's activity revolves around passenger and air cargo. More information can be found at https://www.faa.gov/airports/planning_capacity/npas/.





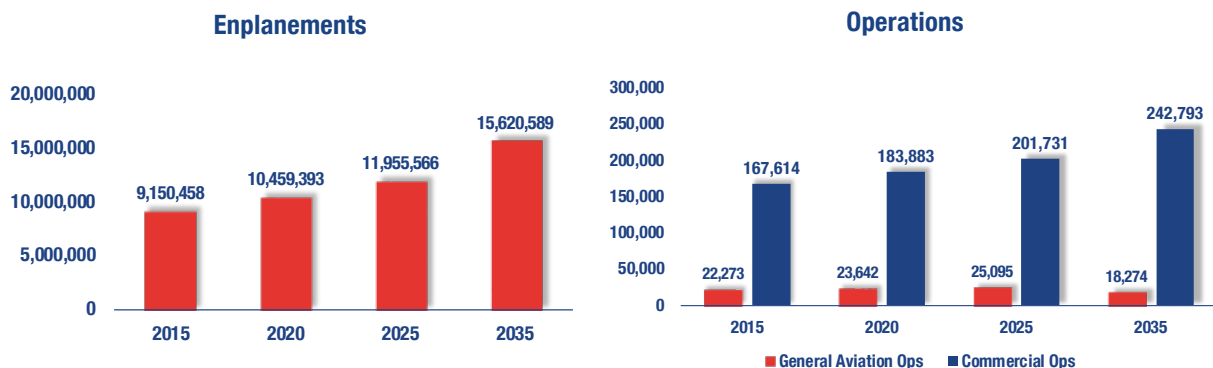
Tampa International Airport serves as the primary commercial airline service airport in the Tampa Bay Area, a metro region with over three million residents. The airport is served by 21 commercial airlines who accommodated over 19 million passengers in 2017. Tampa International is also one of the few airports in the United States that offers regular flights to Cuba. The airport also supports other vital services in addition to commercial airlines. In recent years, the airport has started to expand its air cargo service profile. There is a large FedEx cargo facility with 108,000 square feet of warehouse and office space and a 400,000-square foot apron area, while the belly haul cargo building provides an additional 75,580 square feet of warehouse and office space and 175,000 square feet of apron space. Additionally, the airport has recently contracted with Amazon to accommodate daily deliveries from a Boeing 767 carrying cargo en route to the Tampa area's two Amazon distribution centers. The U.S. Post Office also uses the airport for cargo operations.

Tampa International Airport is also capable of accommodating GA aircraft, primarily in the form of larger corporate and business type aircraft. Two FBOs, Sheltair and Signature Flight Support, provide a full range of GA services and amenities. These GA facilities are often used by professional athletes and political VIPs. The airport's Aircraft Rescue and Firefighting training facility is used to train firemen from neighboring counties, while the Tampa Police Department maintains a hangar and aviation unit at the airport. The airport also supports a variety of charitable causes, such as its annual 5K on the Runway race to raise money for the United Way. Tampa International Airport has also partnered with local schools to provide a summer internship program for students interested in aviation careers.



Current and Forecast Demand

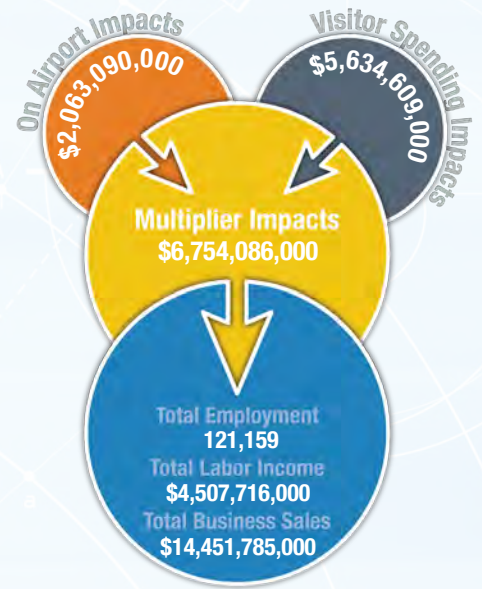
According to Florida Aviation System Plan data, in 2014 there were 65 aircraft based at Tampa International Airport. During the same time period, there were approximately 162,059 commercial operations and 21,872 general aviation operations, resulting in 183,931 total annual operations. For the 12-month period ending on June 30, 2017, 78 percent of all operations were commercial, 12 percent were transient general aviation, ten percent were air taxis, and less than one percent each were military and general aviation.



Economic Impact

Tampa International Airport is located in Hillsborough County, about five miles west of downtown Tampa. The airport has three active runways, with the longest runway measuring 11,002 feet. The airport's facilities support a full range of commercial aircraft and serve personal, leisure, and business-related travel.

Tampa International Airport accommodates approximately 52,000 daily passengers, many of whom are visitors that contribute to the airport's indirect economic impacts. Besides serving commercial passengers, the airport also supports a range of other aviation activities. The airport handles large volumes of air freight and cargo from companies such as FedEx and Amazon Prime. Locally, the airport supports traffic and news reporting for News Channel 8, while the Tampa Police Department aviation unit maintains a large hangar onsite. The airport also provides sports charters for local sports teams and serves as a gateway for high profile visitors. The airport is also involved in the community and hosts United Way fund raisers and an annual 5k on the airfield. TPA's Airport Management and Intern Initiative provides internships and courses in aviation management to local student. Additionally, Tampa International is an important staging and logistics area during natural disaster responses.



Other Airport Characteristics

As a large hub commercial service airport, improvement projects are continuously occurring at Tampa International Airport. Some of the more notable recent projects include significant upgrade and expansion of passenger terminal shops, restaurants, and amenities, a consolidated and expanded rental car facility, and the SkyConnect automated people mover. Planned future projects include curbside expansion at the main terminal, 17 acres of commercial development around the rental car center (to include offices and a hotel), and construction of a new Airside D terminal with 16 gates. These improvements will allow the airport to accommodate 34 million annual passengers.

Current and Future System Service Requirements/Recommendations

The airport provides Tourism (CS), Business, Air Cargo, Intercontinental Service, Corporate, and Business/Recreational (charter, military, medical flights, aerial photography) services. It plans to increase scheduled international and air cargo operations, and enhance airline service to South America. The analysis indicates that the airport is suitable for providing seven of the nine services. The airport has the demonstrated ability to focus on both Commercial Service and General Aviation Airport Services now and in the future. Based on the infrastructure planning analysis for Tampa International Airport, the following depicts the airport's current levels of service as well as the types and levels of service that the airport will likely be required to accommodate by the year 2030:

Commercial Service Role



General Aviation Airport Role



FLORIDA DEPARTMENT OF TRANSPORTATION
AVIATION AND SPACEPORTS OFFICE
www.fdot.gov/aviation