

Witham Field



FLORIDA DEPARTMENT OF TRANSPORTATION
AVIATION AND SPACEPORTS OFFICE

Airport: Witham Field (SUA)

City: Stuart, Florida

County: Martin County

Owner: Martin County

Role: General Aviation Airport

Located in Martin County, approximately one mile southeast of Stuart, Witham Field serves the general aviation needs of the local community. With its three runways, the longest of which is 5,828 feet, the airport can accommodate most GA aircraft, including business jets. The airport's fixed base operators are ideal for serving local users as well as those visiting the area. Witham Field was named GA Airport of the Year by FDOT in 2015.



Existing Facilities

Encompassing 726 acres of land, Witham Field features three runways: runway 12/30, runway 16/34, and runway 7/25. Runway 12/30 is 5,828 feet long by 100 feet wide, paved with grooved asphalt in good condition. Runway 7/25 is 4,652 feet long by 100 feet wide, paved with grooved asphalt in fair condition. Runway 16/34 is 4,998 feet long by 100 feet wide, paved with asphalt in excellent condition. Runways 12/30 and 7/25 feature medium intensity edge lights and precision approach path indicator lights. Additionally, runway 12/30 is equipped with RNAV GPS approaches and engineered material arresting systems at either end.

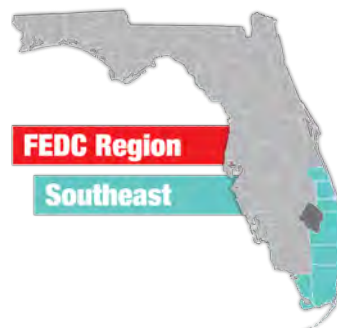
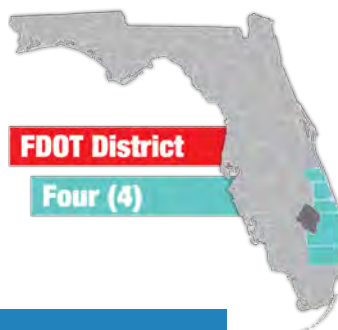
Witham Field is served by two fixed base operators: Stuart Jet Center and Atlantic Aviation. These FBOs provide a full range of GA services. The control tower at the airport is open from 7:00am to 8:00pm daily. Additionally, there are aircraft storage spaces for over 250 aircraft and nearly 100 more paved parking spaces.

For more information, please visit Witham Field's website at:

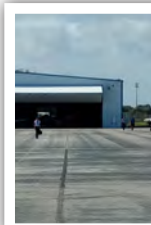
<https://www.martin.fl.us/Airport>



Airport Classification



National airports support the national and state systems by providing communities with access to national and international markets. There are 88 National Asset airports nationwide and 9 within Florida, including Witham Field. More information can be found in the Federal Aviation Administration's ASSET Studies at https://www.faa.gov/airports/planning_capacity/ga_study/.





Florida by the Numbers

Approximately half of all visitors arrive by air

- Florida's airports are often the first and last impression of our state

20 commercial service airports

- 4 large hubs; more than any other state
- Florida ranked second in the nation (2016) for airline passenger volume
- Serves approximately 10% of national passengers

109 general aviation airports

- 9 national ASSET airports
- 6% of general aviation aircraft fleet
- Leading number of pilot certificates in 4 categories

Largest U.S. gateway for Latin American air cargo

Home to the **SUN 'n FUN International Fly-in Expo**, one of the **largest general aviation expos in the world**

Community Service



Witham Field primarily serves as a base for business and corporate aviation while also accommodating the broader spectrum of other GA needs. The majority of operations at Witham Field are local and itinerant GA operations, with a small number of air taxi operations (conducted by a FAR Part 135 operator) and an even smaller number of infrequent military operations. Flight training and recreational aviation operations also play a smaller though still important role in the operational mix at Witham Field.

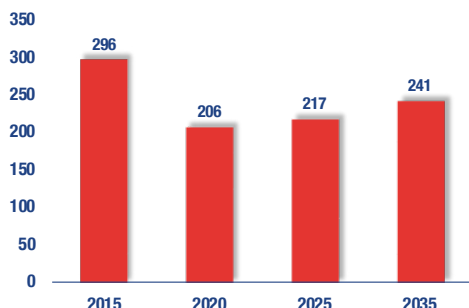
The two FBOs that serve Witham Field are Stuart Jet Center and Atlantic Aviation. Both FBOs offer a full range of GA services, including, but not limited to, 24-hour fuel service, maintenance and repair, flight training, parking (for automobiles and aircraft), car rental, and courtesy transportation. The other major tenants of the airport are Triumph Aerostructures – Vought Aircraft Division, Liberator Medical Supply, Inc (two of the area's top 10 employers) and Martin County. Triumph, a major international aerospace company, operates a 485,000-square foot aerostructure manufacturing facility at an industrial park directly adjacent to the airport. Liberator Medical Supply also operates out of the same industrial park. Martin County facilities include its public works division and an aircraft hangar for the sheriff's office.



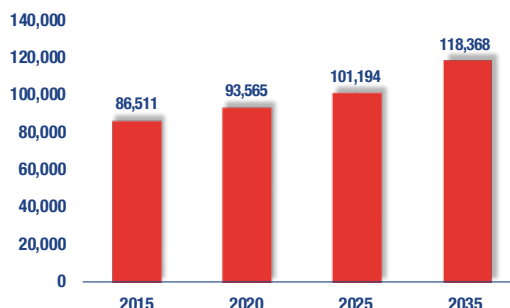
Current and Forecast Demand

According to Florida Aviation System Plan data, in 2014 there were 198 aircraft based at Witham Field. In the same time frame, there were 4,990 commercial operations and 74,784 GA operations. Witham Field's current Airport Reference Code is D-II which is represented by aircraft such as the Gulfstream 350 and 450. The largest aircraft that regularly uses the airport is a Global Express. There is an established hangar waiting list.

Based Aircraft



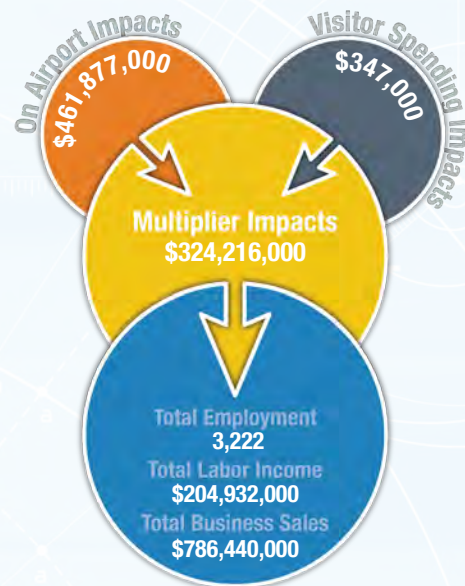
General Aviation Operations



Economic Impact

Witham Field is in Martin County, approximately one mile southeast of Stuart's central business district. The field has three runways, with the longest runway measuring 5,828 feet. The field serves the general aviation needs of the local community. The field has a voluntary noise abatement program and voluntary night time curfew in effect to lessen the impact on surrounding neighborhoods.

The field primarily supports business and corporate traffic. The field also supports recreational activity, flight training, and chartered flights. Law enforcement and air ambulance operations are also supported by the field. The field's fixed base operators (FBOs) serve both local and transient users. The field's tenants, including an aircraft financing business, help contribute to the field's direct economic impact. The field engages with the community and hosts the annual Stuart Air Show, a three-day event featuring air show performances and aircraft and vehicle displays.



Other Airport Characteristics

The airport is currently doing a Master Plan update. The airport has identified the following three projects as being needed in the near term: 1. Construct an Engineered Materials Arresting System (EMAS)

Current and Future System Service Requirements/Recommendations

The airport reports several facility enhancement projects including security upgrades such as fencing, electronic access gates, and the conduct of background checks for AOA access. Anticipated future projects include continuation of the airport's noise abatement and land compatibility projects, electrical vault improvements and upgrades, and new lighting systems for Runways 7/25 and 12/30. The airport currently serves business, flight training, charter/air taxi, and recreational/sport activities. The airport anticipates a modest level of growth in flight training, business, and charter/air taxi activities over the planning period and the analysis indicates that continued service in these areas is appropriate.

General Aviation Airport Role



FLORIDA DEPARTMENT OF TRANSPORTATION
AVIATION AND SPACEPORTS OFFICE
www.fdot.gov/aviation

Cover images courtesy of Lakeland Linder International Airport