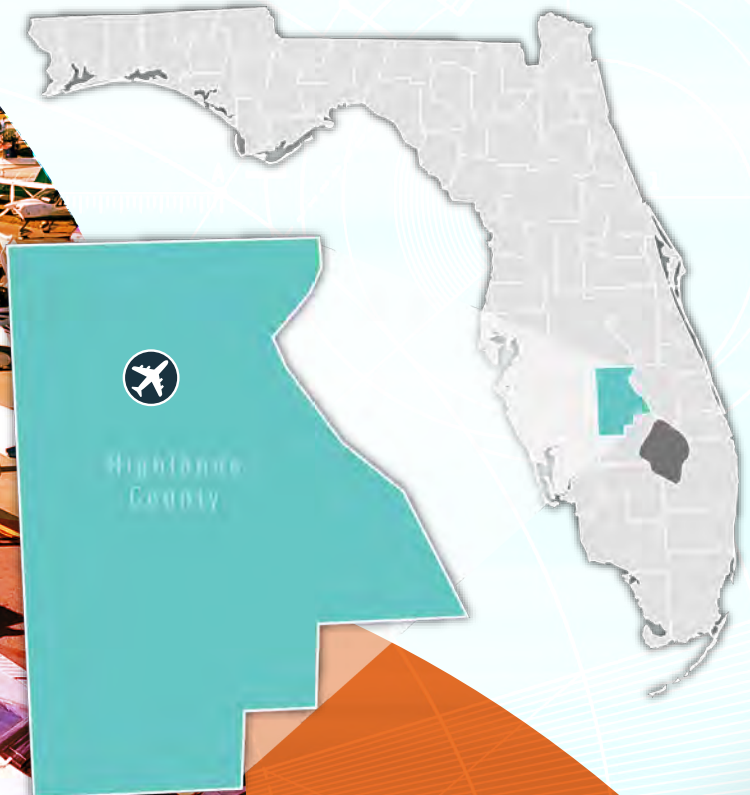


Sebring Regional Airport



FLORIDA DEPARTMENT OF TRANSPORTATION
AVIATION AND SPACEPORTS OFFICE

Airport: Sebring Regional Airport (SEF)

City: Sebring, Florida

County: Highlands County

Owner: Sebring Airport Authority

Role: General Aviation Airport

Located in Highlands County, Sebring Regional Airport is within 90 miles of six international airports. Serving the heart of central Florida, facility consists of 2,147 acres and is situated within a 150-mile radius of 85 percent of the state's population. The 5,234-foot main runway, programmed for a 1,472-foot extension, accommodates multi-engine general aviation and corporate jet aircraft. The modern terminal and full service FBO operation are ideal for serving local users as well as those visiting area.



Existing Facilities

Facilities at Sebring Regional Airport include runway 01/19 and runway 14/32. Runway 01/19 is asphalt, supported by a 50-foot-wide full-length taxiway, and measures 5,224 feet by 100 feet. It is equipped with medium intensity runway edge lights, runway end identifier lights, and precision approach path indicators. Runway 14/32 is asphalt, has a 289-foot displaced threshold, and measures 4,990 feet by 100 feet. The two runways are intersecting and both utilize the RNAV GPS instrument approach procedure. Other facilities at the airport consist of a 22,000 square-foot terminal building that includes administration offices and 100 automobile parking spaces. There are also several tie-downs and 9 commercial hangar bays. T-hangars have capacity for 90 aircraft. There is 100LL fuel, JET-A fuel, and UL94 fuel available at the airport for its users.

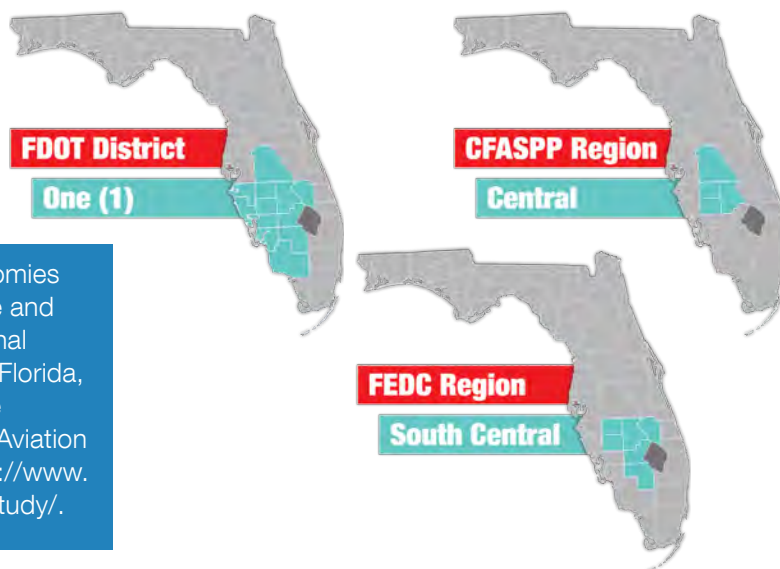
For more information, please visit SEF's website at:
<https://sebring-airport.com/>

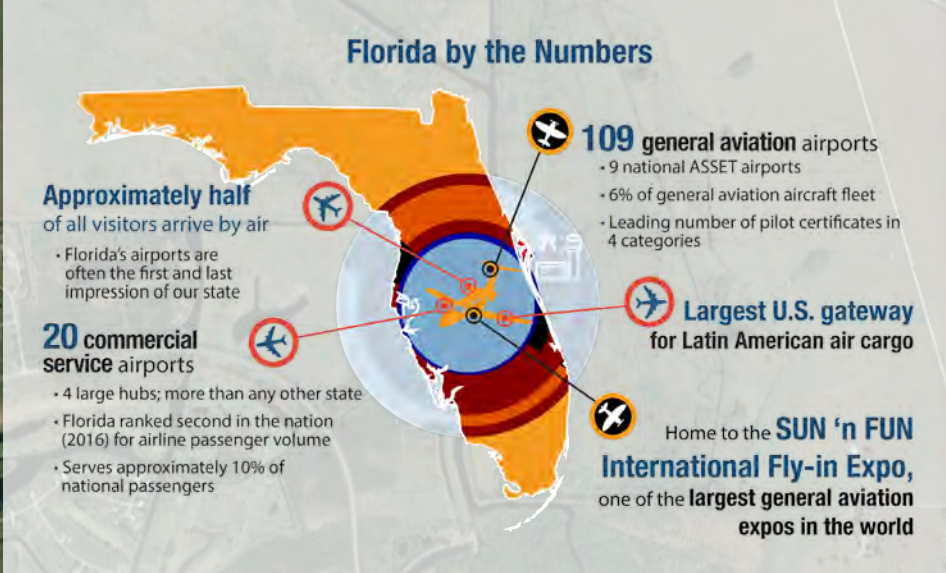


Airport Classification



Regional airports support regional economies by connecting communities to statewide and interstate markets. There are 482 Regional Asset airports nationwide and 30 within Florida, including Sebring Regional Airport. More information can be found in the Federal Aviation Administration's ASSET Studies at https://www.faa.gov/airports/planning_capacity/ga_study/.





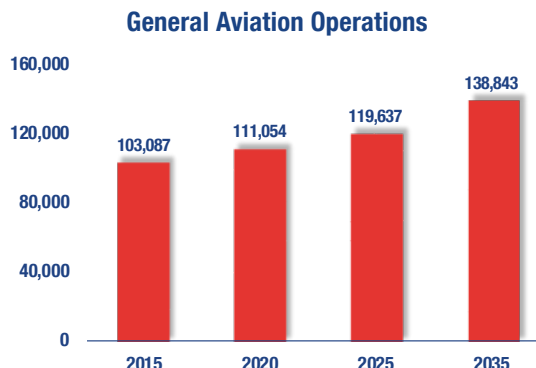
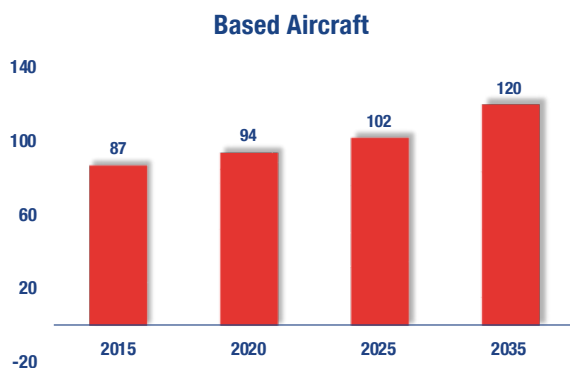
Community Service

Sebring Regional Airport serves GA activity and plays an important role in generating economic activity for the community. The airport focuses on economic development with a 2,000-acre business park that experiences all types of commercial aeronautical activity as well as landside commercial and industrial use. Main GA activities occurring at airport include flight training, business activity, and recreational flying. For the 12-month period ending on July 11, 2017, 59 percent of airport operations were attributable to transient GA while 41 percent were due to local GA. There are two flight training businesses located on the airport that employ four flight instructors and have nine based aircraft dedicated to flight training. GA operations by business users are very common at the airport with about 60 percent of its annual operations being business-related and about 10 percent of its based aircraft being owned by local businesses such as medical, aeronautical, racing, real estate, agricultural, and manufacturing businesses.



Current and Forecast Demand

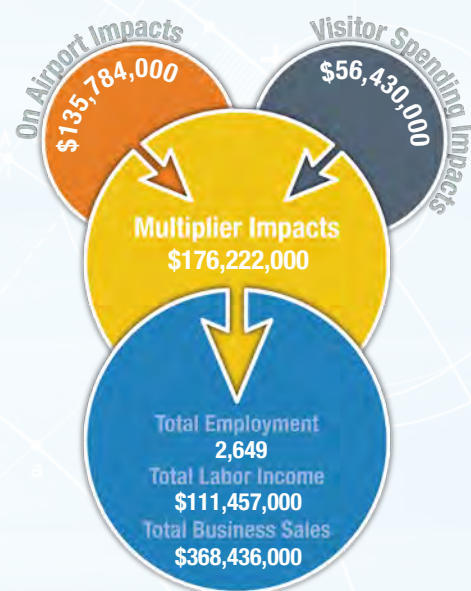
Sebring Regional Airport plays an important role in serving many different facets of GA. As of 2017, there were 91 based aircraft and a total of 72,670 annual operations. Of the based aircraft, the majority are single-engine airplanes with the remaining being multi-engine airplanes, jet airplanes, helicopters, and ultralights. Most of the based aircraft are stored in T-hangars or commercial hangars with a few stored on paved tie-downs. The largest plane that uses the airport on a regular basis is a Gulfstream IV and the current Airport Reference Code is a D-II. Historic and forecast FDOT aviation activity information on file for the airport follows :



Economic Impact

Sebring Regional Airport is in Highlands County, approximately eight miles northwest of Tampa. The airport has two runways, with the longest runway measuring 5,234 feet. The airport serves a variety of general aviation activities for local and transient users.

The airport primarily supports recreational aviation, including parachuting and ballooning, as well as business flying, freight and cargo activity, and agricultural spraying. The airport itself is uniquely situated to offer economic benefits to tenants, as its location in a Foreign Trade Zone means that purchased fuel is not subject to certain taxes, saving up to \$0.50 per gallon. Additionally, the airport is in a Rural Enterprise Zone and a Community Redevelopment Area, which lends economic benefits to tenants. The airport hosts several annual events, including the U.S. Sport Aviation Expo, a four-day aviation event that attracts visitors from all over the world and earns between \$15K to \$20K. Additionally, the Sebring International Raceway is located at the airport. The racetrack hosts major events throughout the year that contribute significantly to the airport's overall economic impact.



Other Airport Characteristics

Sebring Regional Airport supports a commerce park, located within the airport proper, of 1,300 acres with 30 percent of the land developed. While SEF does not have any based military aircraft, it does accommodate transient military operations. Sebring Regional Airport receives about 5,000 military operations a year from C-130's, AH-65's, and Chinook's.

Current and Future System Service Requirements/Recommendations



FLORIDA DEPARTMENT OF TRANSPORTATION
AVIATION AND SPACEPORTS OFFICE
www.fdot.gov/aviation