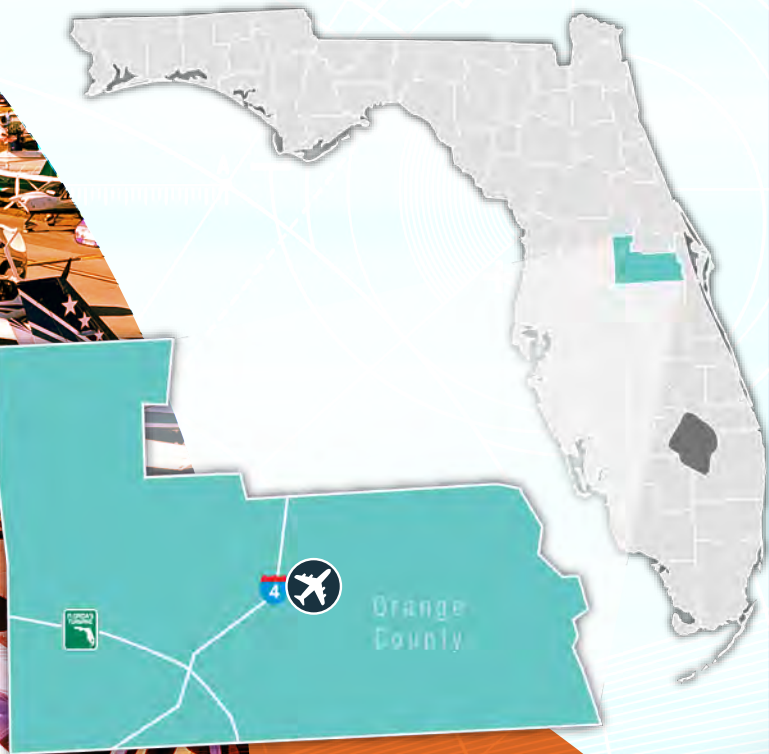


Executive Airport



FLORIDA DEPARTMENT OF TRANSPORTATION
AVIATION AND SPACEPORTS OFFICE

Airport: Executive Airport (ORL)

City: Orlando, Florida

County: Orange County

Owner: Greater Orlando Aviation Authority

Role: General Aviation Airport

Located in Orange County, three miles east of downtown Orlando, Executive Airport is a designated reliever airport to Orlando International Airport and serves the general aviation needs of the greater Orlando metropolitan area. With two intersecting runways, the longest of which is 6,004 feet, the airport can accommodate most GA business jet aircraft. The airport's terminals are ideal for serving local users as well as those visiting the area.



Existing Facilities

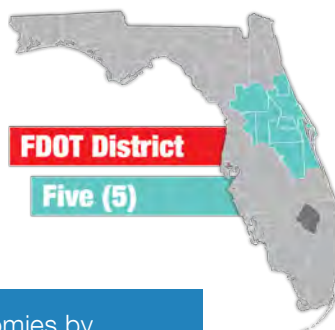
Executive Airport is served by two intersecting runways, runway 7/25 and runway 13/31. Runway 7/25 measures 6,004 feet by 150 feet and utilizes both RNAV GPS and ILS instrument approaches. Runway 13/31 measures 4,625 feet by 100 feet and has no instrument approach aids. Both runways are equipped with high intensity runway edge lights, precision approach path indicator lights, and runway end indicator lights. The two runways are paved with asphalt and linked by full-length parallel taxiways. The airport also has an FAA operated air traffic control tower that is open from 6 a.m. to 11 p.m., seven days a week.

Two full service fixed base operators, Atlantic Aviation Flying Services and Sheltair Aviation Services, provide tiedown parking, aircraft maintenance, fuel, flight planning, pilots' lounges, and courtesy transportation. The airport's T-hangars and conventional box hangars offer a total of 229 covered aircraft storage spaces. The airport also has an on-site and staffed U.S. Customs & Border Protection station.

For more information, please visit ORL's website at:
<https://orlandoairports.net/orlando-executive-airport/>



Airport Classification



Regional airports support regional economies by connecting communities to statewide and interstate markets. There are 492 Regional Asset airports nationwide and 30 within Florida, including Executive Airport. More information can be found in the Federal Aviation Administration's ASSET Studies at https://www.faa.gov/airports/planning_capacity/ga_study/.





Florida by the Numbers



Community Service



Executive Airport accommodates most GA aircraft including business jet and recreational aircraft. The airport is a designated reliever airport for Orlando International Airport, meaning it is tasked with serving the non-commercial airline needs of the community. The main activity occurring at the airport is corporate business activity because of its convenient location near downtown Orlando. It is estimated that approximately 80 percent of annual GA operations are business-related, while approximately 17 percent of the airport's based aircraft are owned by local businesses. Other activities at the airport include medical air ambulance and public safety helicopter operations. The airport also provides a great location for flight training operations. Two flight training businesses are located on the airport and several flying clubs offer flight training for their members. The airport also attracts a great deal of flight training from other Central Florida airports due to its diverse instrument approaches and FAA operated air traffic control tower.

Besides corporate activity, emergency medical aviation, and flight training, Executive Airport serves recreational flyers, attracting a large amount of out of town GA aircraft. The airport's central location and amenities make it an ideal location for transient pilots to touch down and spend time at local convention centers, attractions, and theme

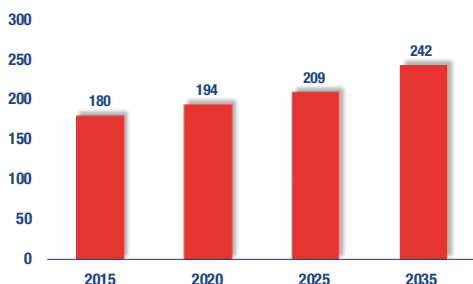
parks. For the 12-month period ending on August 11, 2017, approximately 58 percent of all operations were attributable to transient GA aircraft, 36 percent were local GA aircraft, five percent were air taxi operations, and less than one percent were military operations. The airport also currently serves FAR Part 135 operators.



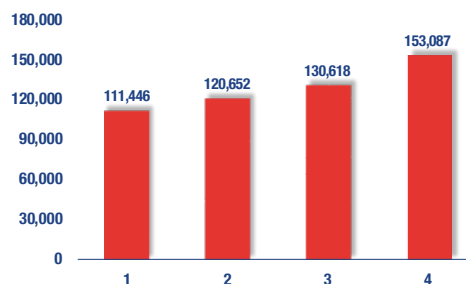
Current and Forecast Demand

Executive Airport plays an important role in serving all facets of GA. As of 2014, there were 197 based aircraft and 109,778 total operations at the airport. Of the based aircraft, the majority are single engine airplanes with the rest being multi-engine airplanes, jet airplanes, and helicopters. Approximately 35 percent of the based aircraft are stored on paved tie-downs and 65 percent are stored in T-hangars or conventional hangars. The airport presently reports a T-hangar waiting list of 60 aircraft. The largest planes that use the airport on a regular basis are corporately operated Boeing Business Jets, Boeing 737s, and MD-80s. The current Airport Reference Code for the airport is C-II.

Based Aircraft



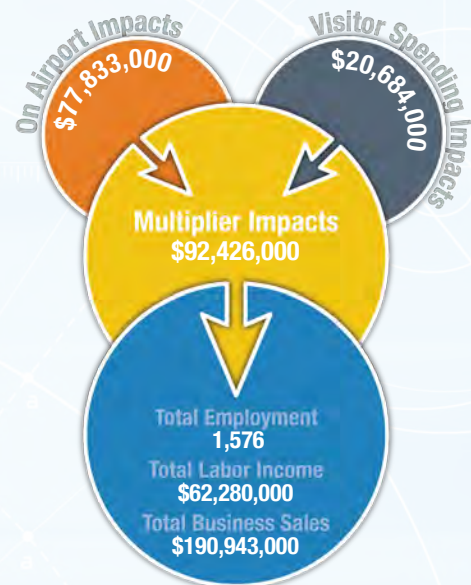
General Aviation Operations



Economic Impact

Executive Airport is located in Orange County, approximately two miles east of downtown Orlando. The airport has two intersecting runways, with the longest runway measuring 6,004 feet. The airport accommodates general aviation business jet aircraft and serves the aviation needs of the metropolitan area. The airport is a designated reliever airport to the Orlando International Airport and has an on-site U.S. Customs and Border Protection office. Airport terminals are ideal to serve local and transient users.

Due to its convenient location to the industrial and business centers in Orlando, the airport primarily supports corporate business activity. The airport also supports medical air ambulance and public safety helicopter activity, and provides a great location for flight instructors to conduct flight trainings. Two fixed based operators (FBOs) located at the airport serve the needs of local and transient users. The airport is engaged in the local community and hosts community events, such as the Run for the Angels 5k, that attract nearly 400 participants.



Other Airport Characteristics

Corporate aviation, emergency medical aviation, recreational flying, and flight training are the most common activities at Executive Airport. There is also a developing industrial park located in the southeast corner of the airport. The airport does not have any based military aircraft but it does serve transient military operations. In 2017, less than one percent of operations at the airport were military operations. The airport also hosts the National Business Aviation Association annual exposition every two years.

Current and Future System Service Requirements/Recommendations

The airport supports corporate, air cargo, recreational, flight training, media, medical, and public safety needs. The Federal and State System Plans identify Executive Airport as the primary reliever for Orlando International Airport. Executive Airport plays an important role in supporting the needs of the GA community in Central Florida.

Commercial Service Role



Business



Air Cargo

General Aviation Airport Role



Flight Training



Corporate



Business/Recreational



FLORIDA DEPARTMENT OF TRANSPORTATION
AVIATION AND SPACEPORTS OFFICE
www.fdot.gov/aviation

Cover images courtesy of Lakeland Linder International Airport