

# Okeechobee County Airport



FLORIDA DEPARTMENT OF TRANSPORTATION  
AVIATION AND SPACEPORTS OFFICE

**Airport:** Okeechobee County Airport  
(OBE)

**City:** Okeechobee, Florida

**County:** Okeechobee County

**Owner:** Okeechobee County

**Role:** General Aviation Airport



Located in Okeechobee County, approximately 45 miles west of Port Saint Lucie, Okeechobee County Airport serves many general aviation activities, including corporate and recreational activity. With its two intersecting runways, the longest of which is 5,000 feet, the airport can accommodate some GA and business jet aircraft. The airport's terminal is ideal for serving local users as well as those visiting the area.



## Existing Facilities

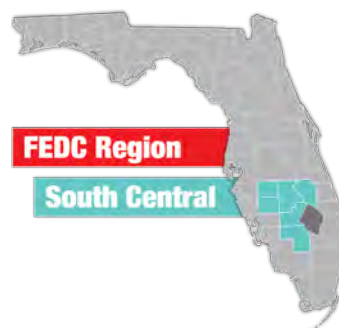
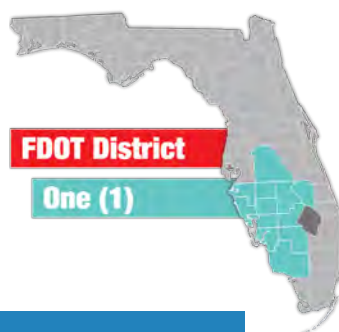
Okeechobee County Airport is served by two asphalt runways, runway 5/23 and runway 14/32. Runway 5/23 is the longest and measures 5,000 feet by 100 feet, while runway 14/32 measures 4,001 by 75 feet. Both runways have full parallel taxiways and are in good condition, having been repaved in 2003 and 2007. The two runways are also equipped with precision approach path indicator lights and utilize the RNAV GPS instrument approach. The airport includes a terminal building and a 198,000 square-foot lighted parking apron with aircraft tie-downs. Located at the northwest corner of the apron is a 24-hour self-service fuel farm that includes two 12,000-gallon tanks of 100LL and JET-A fuel. The county owns and rents 10 T-hangars and 6 box hangars; all other hangars are privately owned on leased land. A 300kw emergency generator has been installed to ensure the airport's operational status for post-hurricane recovery operations.

For more information, please visit Okeechobee County Airport's website at:

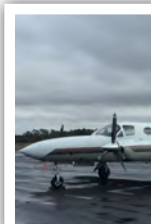
<http://www.co.okeechobee.fl.us/departments/airport>



## Airport Classification



Local airports supplement communities by providing access to primarily intrastate and some interstate markets. There are 1,261 Local Asset airports nationwide and 30 within Florida, including Okeechobee County Airport. More information can be found in the Federal Aviation Administration's ASSET Studies at [https://www.faa.gov/airports/planning\\_capacity/ga\\_study/](https://www.faa.gov/airports/planning_capacity/ga_study/).





## Community Service



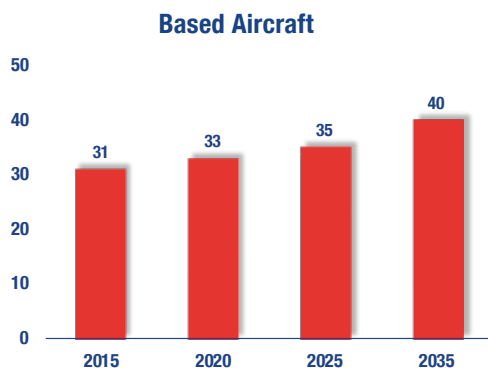
Okeechobee County Airport supports GA and business jet aircraft. The main activities that occur at the airport are flight training, business activity, agricultural spraying, and emergency medical aviation. The airport also plays an important role in supporting mosquito control and crop dusting activities. There is also a particularly high concentration of flight training at the field. Emergency medical aircraft utilize the airport to transport patients to medical facilities on both the east and west coasts of Florida.

Almost all activity at the airport is related to visiting aircraft. People who utilize the airport are often traveling to Okeechobee for tourism related activities, such as fishing. In 2017, approximately 90 percent of operations were due to transient aircraft, while about 10 percent of operations were due to local aircraft. There are two aircraft refinishing businesses at the airport that have increased the frequency of transient business activity. The airport contributes to attracting economic development in the area with its on-site industrial park. The Landing Strip Café at the airport is a local favorite for the community and for visitors. The airport terminal contains a fixed base operator, Okeechobee Jet Center, that provides services to local and transient users.



## Current and Forecast Demand

Okeechobee County Airport plays an important role in serving the GA needs of the local community. As of 2014, there was a total of 50,000 annual operations and a total of 33 based aircraft with the majority being single-engine airplanes. There is currently a waiting list for hangar space. The largest aircraft that use the airport regularly are Gulfstream II's. The current Airport Reference Code for the airport is D-II.

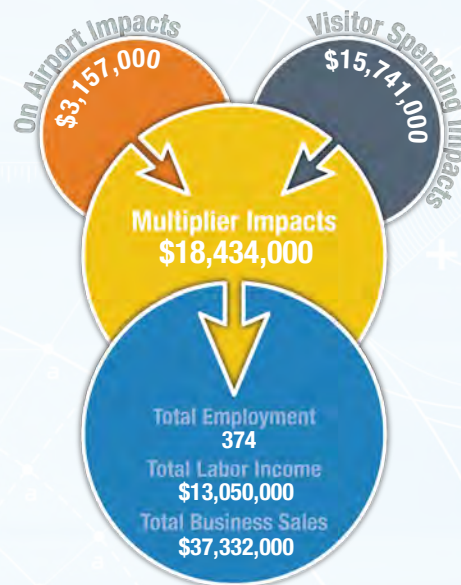




# Economic Impact

The Okeechobee County Airport is approximately 110 miles south of Orlando and 130 miles north of Miami. The airport has two intersecting runways, with the longest runway measuring 5,000 feet. The airport supports general aviation and business jet aircraft.

The airport primarily supports corporate business activity, agricultural spraying, and flight training. The tenants at the airport contribute to its economic impact; for example, the Landing Strip Café is a local favorite restaurant. A paint shop is also located at the airport and provides aircraft painting for local users and visitors. The airport further benefits the region by supplying fuel for mosquito control and crop dusting. The airport also hosts numerous Aviation Flight Clubs, which schedule Fly-In activities. The airport's industrial park contributes to attracting economic development in the area.



## Other Airport Characteristics

The airport's vision for its future is to attract more corporate and business aircraft. The Okeechobee Jet Center has proposed a new 14-acre, \$14 million privately funded FBO facility specifically designed for corporate and business aircraft. A proposal to commercially develop more hangars for rent and/or sale is presently being considered.

## Current and Future System Service Requirements/Recommendations

The airport provides Flight Training, Recreational/Sport and Business/Recreational services. The airport is well prepared to host Part 135 charter operations.

### General Aviation Airport Role



Flight Training



Recreational/Sport



Business/Recreational



FLORIDA DEPARTMENT OF TRANSPORTATION  
AVIATION AND SPACEPORTS OFFICE  
[www.fdot.gov/aviation](http://www.fdot.gov/aviation)