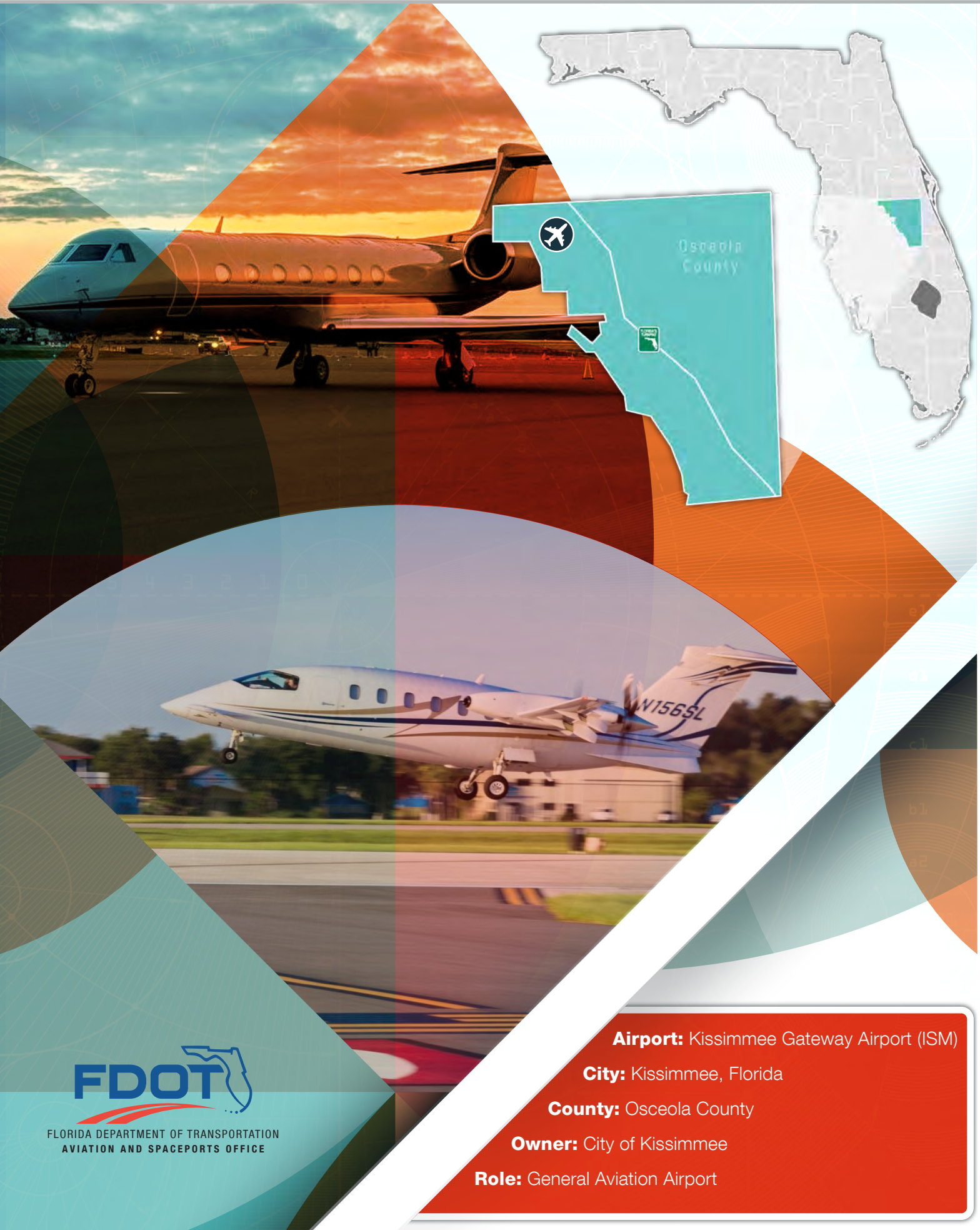


Kissimmee Gateway Airport



FLORIDA DEPARTMENT OF TRANSPORTATION
AVIATION AND SPACEPORTS OFFICE

Airport: Kissimmee Gateway Airport (ISM)

City: Kissimmee, Florida

County: Osceola County

Owner: City of Kissimmee

Role: General Aviation Airport

Kissimmee Gateway Airport is located in Osceola County, approximately 25 miles south of downtown Orlando. With its two intersecting runways, the longest of which is 6,000 feet, the airport can accommodate all general aviation business jet aircraft, as well as commercial jets such as the Airbus A320 and Boeing 737. The airport's terminal is ideal for serving local users as well as those visiting the area.



Existing Facilities

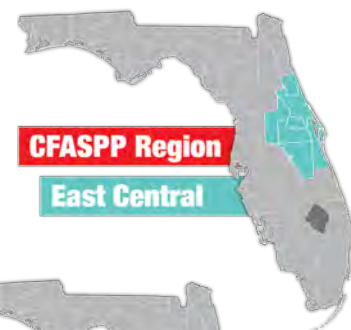
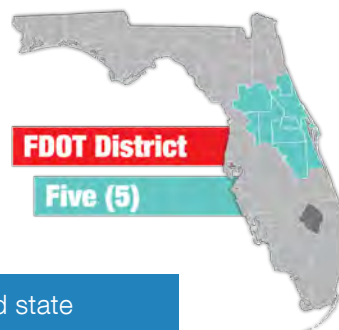
Kissimmee Gateway has two intersecting runways, runway 15/33 and runway 6/24. Runway 15/33 is the longest and measures 6,001 feet long by 100 feet wide. Runway 6/24 measures 5,001 feet long by 100 feet wide. A T-hangar complex is located south of the runway 24 approach end. Both runways are asphalt, in good condition, and served by parallel taxiway systems. The runways also are equipped with precision approach path indicators, end indicator lights, and utilize the RNAV GPS instrument approach. Runway 15/33 also utilizes the Instrument Landing System (ILS) instrument approach. The airport has a 3,500 square-foot terminal to serve GA pilots and passengers. There are 73 paved automobile parking spaces at the terminal building. The T-hangars and conventional hangars at the airport combine to provide 229 covered storage spaces for aircraft. There are also 42 tiedowns spaces. The air traffic control tower operates from 7:00 a.m. to 10:00 p.m., seven day a week.

For more information, please visit Kissimmee Gateway Airport's website at:

www.kissimmeeairport.com

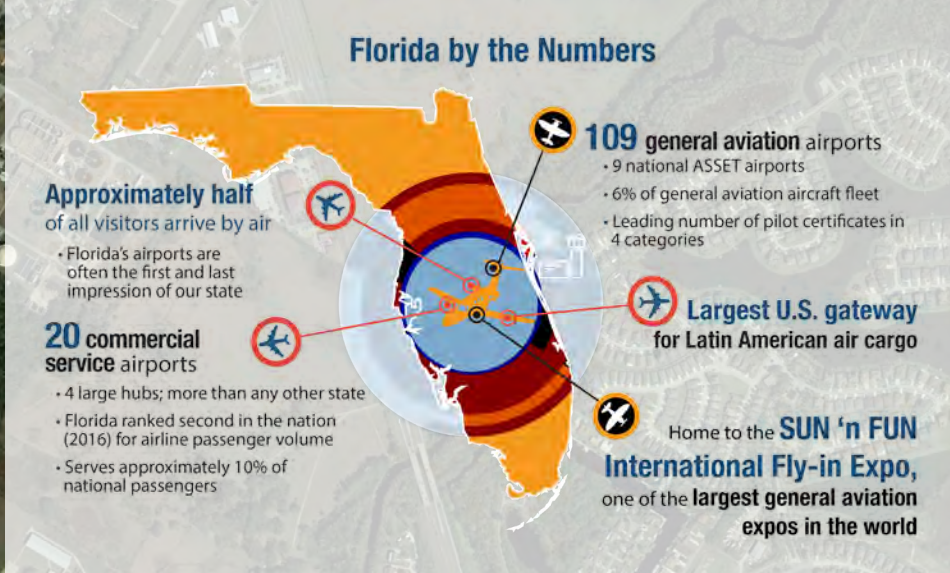


Airport Classification



National airports support the national and state systems by providing communities with access to national and international markets. There are 88 National Asset airports nationwide and 9 within Florida, including Kissimmee Gate Airport. More information can be found in the Federal Aviation Administration's ASSET Studies at https://www.faa.gov/airports/planning_capacity/ga_study/.





Community Service



The airport accommodates all GA and business jet aircraft. It is often utilized by business and leisure flyers since it is the closest airport to the Orlando/Orange County Convention Center, several large convention hotels, Walt Disney World, and Sea World. The main activities occurring at the airport include corporate business activity and recreational flying. The airport estimates that 11 percent of its annual operations are business related and approximately one percent of the airport's based aircraft are owned by local businesses. There are also four flight training businesses located at the airport that offer aviation career training and education. These businesses employ over 50 flight instructors and have 55 aircraft that are based at the airport. Flight training also makes up roughly 65 percent of the airport's annual operations. The airport also attracts a number of transient or visiting GA aircraft. In 2017, approximately 50 percent of annual operations were due to transient aircraft and about 48 percent of annual operations were due to local aircraft.

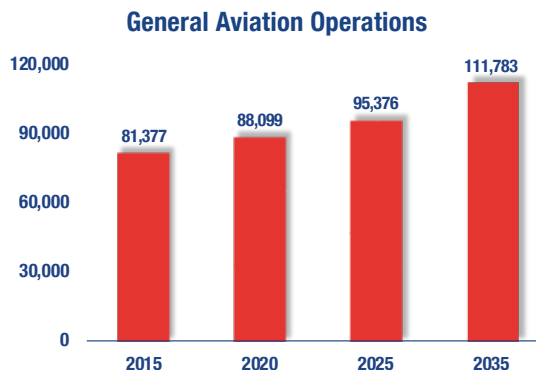
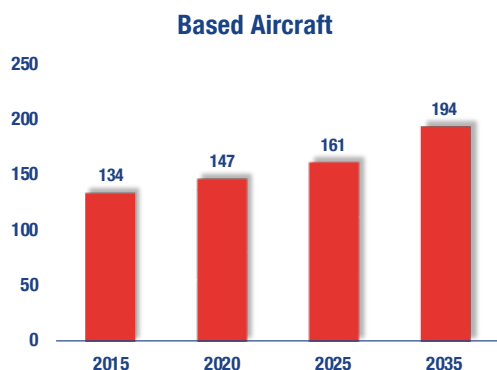
The Osceola County Sheriffs Aviation Unit, the Osceola County Life Flight Helicopter Ambulance Base, and the Florida Fish and Wildlife are all located at the airport to serve the diverse needs of the community. There is also an industrial park adjacent to the airport. This industrial park contains 10 sites on 100 acres and is approximately ten percent occupied.

There is also a historic Warbird Museum at the airport with T-6 Warbird adventure flights, P-51 Mustang pilot training, and an 18-hole golf course. The airport includes aircraft maintenance businesses and three fixed base operators to serve the needs of local and transient users.



Current and Forecast Demand

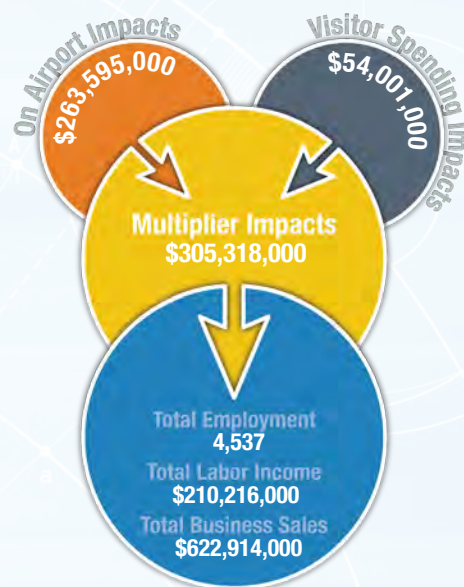
Kissimmee Gateway Airport plays an important role in serving all facets of GA. The largest plane that uses the airport on a regular basis is a Gulfstream V and the current Airport Reference Code for the airport is C-II. As of 2014, there were 147 based aircraft at the airport with the majority being single engine airplanes followed by jet airplanes. Of this total, approximately 20 percent of the aircraft are stored on paved tie-downs, and 80 percent are in T-hangars or conventional hangars. There were also 85,708 annual operations in 2014.



Economic Impact

Kissimmee Gateway Airport is located in Osceola County, approximately 17 miles south of downtown Orlando. The airport has two intersecting runways, with the longest runway measuring 6,001 feet long. The airport accommodates most general aviation aircraft, including business jets.

The airport primarily supports corporate business activity and recreational flying. Its location near major tourist attractions, such as Walt Disney World, makes the airport a vital part of the region's tourism industry. The Osceola County Sheriffs Aviation Unit and the Osceola County Life Flight Helicopter Ambulance Base are both located at the airport. The airport also supports agricultural spraying, cargo activity, news reporting, aerial photography, and environmental patrols. Flight instructors use the airport to provide flight training and to further aviation career training and education. The airport's fixed base operator (FBO) is fully equipped serves the needs of local and transient users.



Other Airport Characteristics

Kissimmee Gateway Airport provides valuable services to the local GA community. The main components of this airport's GA activity are business activity, flight training, and recreational flying. The airport has especially become an important hub for private and corporate travelers. The airport also plays a role as a catalyst to economic development with its location being an ideal investment for new businesses. While the airport does not have any based military aircraft, it does accommodate transient military operations and acts as a refueling location for U.S. military helicopters.

Current and Future System Service Requirements/Recommendations

The airport provides Flight Training, Corporate, Tourism (CA), Recreational/Sport, and Business/Recreational (sightseeing, fire fighting, charter, medical flights, law enforcement) services. The airport plans to increase its flight training, recreational, corporate, and charter operations. It would like to establish cargo operations. Analysis indicates that the airport is best suited for providing Recreational/Sport, Tourism (CA), Flight Training, and Corporate service.

Commercial Service Role



Air Cargo

General Aviation Airport Role



Flight Training



Corporate



Tourism



Recreational/Sport



Business/Recreational



FLORIDA DEPARTMENT OF TRANSPORTATION
AVIATION AND SPACEPORTS OFFICE
www.fdot.gov/aviation