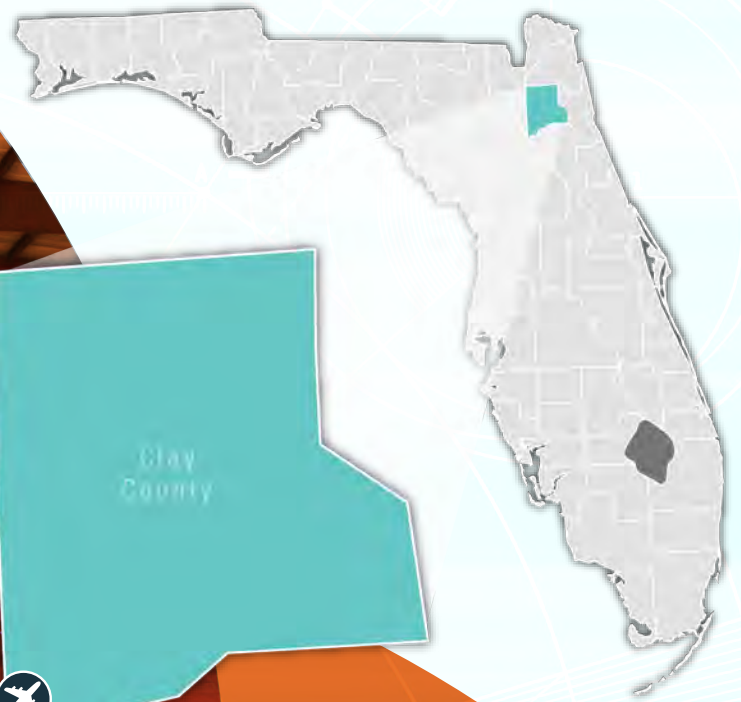


Keystone Airpark



FLORIDA DEPARTMENT OF TRANSPORTATION
AVIATION AND SPACEPORTS OFFICE

Airport: Keystone Airpark (42J)

City: Keystone Heights, Florida

County: Clay County

Owner: Keystone Airpark Authority

Role: General Aviation Airport

Located on the county line between southern Clay and Bradford Counties, approximately 55 miles southwest of Jacksonville, Keystone Airpark serves many types of general aviation activities. With its two converging runways, the longest of which is 5,046 feet, the airpark can accommodate most general aviation business jet aircraft. The airpark's terminal is ideal for serving local users as well as those visiting the area.



Existing Facilities

Facilities at the Keystone Airpark include two converging runways, runway 05/23 and runway 11/29. Runway 05/23 is asphalt and measures 5,046 feet by 100 feet. It is equipped with medium intensity runway edge lights, runway end identifier lights, and precision approach path indicators. The runway also utilizes the RNAV GPS and VOR/DME instrument approach procedures. Runway 11/29 is asphalt and measures 4,899 feet by 75 feet. It is equipped with high intensity runway edge lights, runway end identifier lights, and precision approach path indicators. Other facilities at the airport include a 1,600 square-foot terminal with 50 auto-parking spaces to serve GA pilots and passengers. The airport also has 30 tie-downs and 40 covered parking spaces between T-hangars and conventional hangars for GA aircraft. There is 100LL fuel and JET-A fuel available as well at the airport to serve its users.

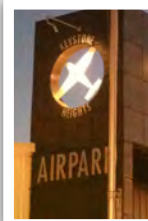
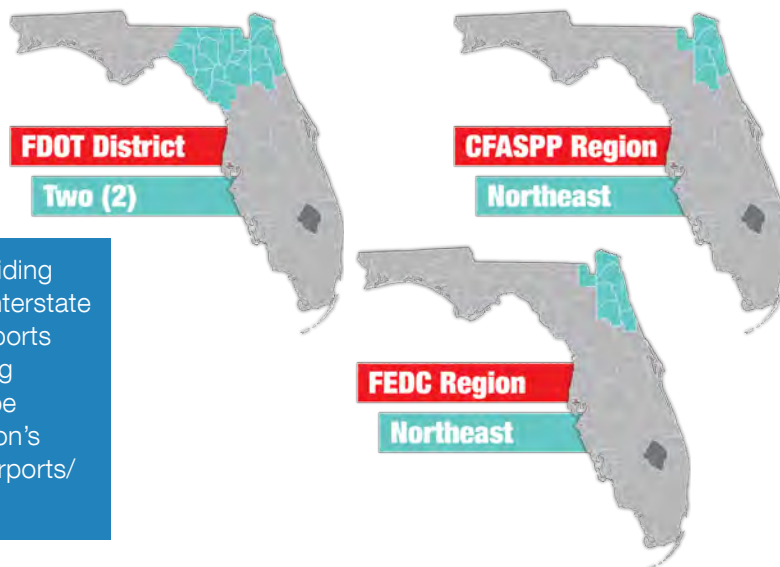
For more information, please visit 42J's website at:
<http://keystoneairport.com/>



Airport Classification



Local airports serve communities by providing access to primarily intrastate and some interstate markets. There are 1,278 Local Asset airports nationwide and 29 within Florida, including Keystone Airpark. More information can be found in the Federal Aviation Administration's ASSET Studies at https://www.faa.gov/airports/planning_capacity/ga_study/.





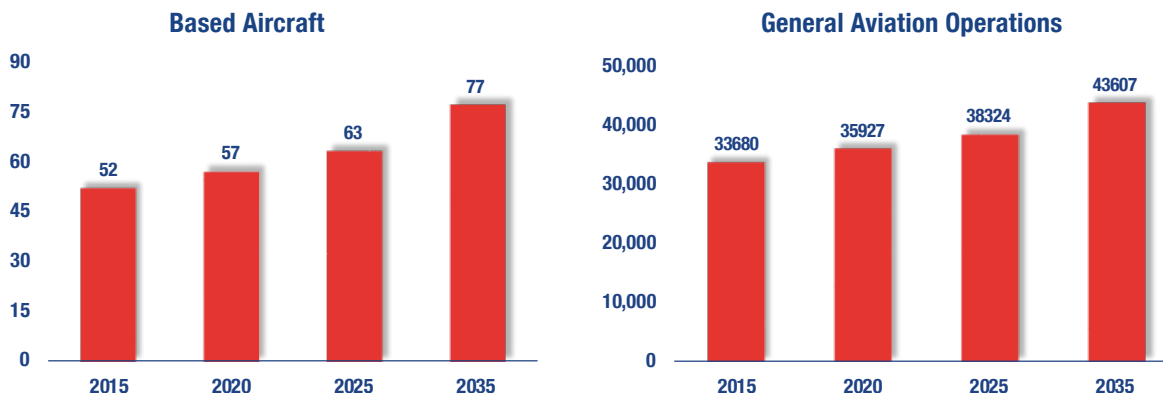
The Keystone Airpark serves the GA needs of the local region. The location of the airport is rural and serves many areas such as Starke, Lake Butler, Keystone, and Melrose. The airpark focuses primarily on serving recreational flying, flight training, and business-related general aviation. There are both fixed and rotor wing flight schools at the airpark. Instructors at the airpark offer flight, aerobatic, military, and parachute trainings. Students from other countries come and stay for the flight schools and at present flight training accounts for about 25 percent of the airpark's annual operations. Military operations due to visiting National Guard and Air Guard also occur at the airport and account for about 3 percent of the annual operations. Camp Blanding helicopters perform the majority of these military operations. The airport is used by both local and transient aviators. There is also a 300-acre business park at the airpark that acts as an ideal location for aircraft auxiliary services and cargo businesses. General aviation operations by corporate and business users are becoming more common at the airpark. The airpark estimates that 10 percent of its annual operations are business-related and approximately 5 percent of the airpark's based aircraft are owned by local businesses. Local companies that use the airpark's facilities include Griffin Industries, Camp Blanding, Express Air, European Rally & Performance Driving School, and Aquila Aviation. The airpark is also occasionally utilized for aerial advertising by the Good

Year blimp and Direct TV blimp.



Current and Forecast Demand

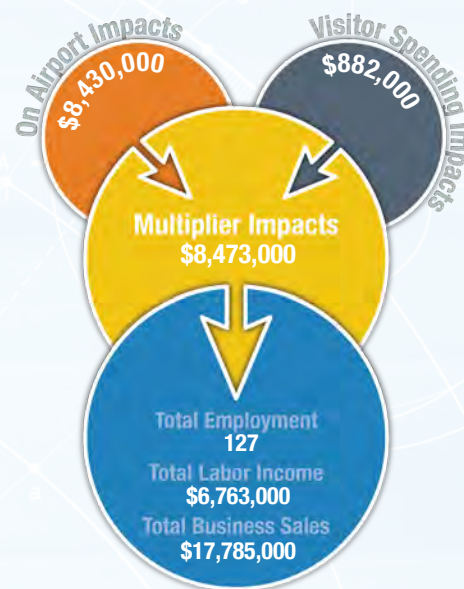
According to 2014 Florida Aviation System Plan data, in 2014 there were 53 aircraft based at Keystone Airpark. During the same time period, there were 500 commercial operations and 31,900 GA operations, resulting in 32,400 total operations. For the 12-month period ending on October 16, 2017, 49 percent of all operations were due to transient GA, 46 percent were due to local GA, three percent were military, and two percent were air taxis. The current Airport Reference Code is B/II/5000. Historic and forecast FDOT aviation activity information on file for Keystone Airpark is as follows:



Economic Impact

Keystone Airpark borders Clay and Bradford Counties, approximately five miles southwest of Jacksonville. The airpark has two converging runways, with the longest measuring 5,044 feet. The airpark accommodates most general aviation aircraft and serves many types of general aviation activities.

The airpark primarily supports flight trainings and aviation career education. The airpark prides itself on giving back to the community by educating youth and encouraging general aviation. Instructors at the airpark provide flight, aerobatic, military, and parachute trainings. Students from other countries attend the airpark's flight schools and their spending contributes to the airpark's indirect economic impacts. Besides aviation training, the airpark supports local business activity with nine corporate hangars. The Goodyear blimp and the Direct TV blimp also occasionally launch from the airpark. Onsite tenants, such as the new fixed based operator (FBO), contribute to its direct economic impacts. The airpark also hosts the Wings of Dreams Aviation Museum, which attracts global customers who come to see NASA artifacts and equipment.



Other Airport Characteristics

The Keystone Airpark is utilized primarily for recreational flying, flight training, and business-related activity. Air taxi operations also occur at the airpark and make up approximately 2 percent of the total annual operations. The Santa Fe Swamp Forestry has aircraft based at airpark to support aerial wildland firefighting for the community. The airpark also is home to the Wings of Dreams Aviation Museum that brings in customers from all over the world.

Current and Future System Service Requirements/Recommendations

The airpark recently renovated the FBO and airpark administration spaces, and primarily serves recreational/sport and flight training activities. There are a moderate amount of business and charter/air taxi activities on the airpark. Flight training is conducted by off-airpark schools, and management expects this to continue through the planning period. The airpark anticipates several improvements in the future, including a runway extension, apron expansion, additional hangar spaces, and perhaps a business park. Management sees the possibility of the airpark serving as an alternative to Gainesville Regional and Jacksonville International. The analysis indicates that the airpark is, perhaps best suited in its current role of serving flight training and recreational/sport activities. However, the current property is sufficient to support some expansion into business and/or corporate activities. While an extension of the existing runway would be desirable to accommodate larger and more modern aircraft, the availability of a non-precision approach and visual approach aids is of benefit to existing and potential users.

General Aviation Airport Role



FLORIDA DEPARTMENT OF TRANSPORTATION
AVIATION AND SPACEPORTS OFFICE
www.fdot.gov/aviation