

Everglades Airpark



FLORIDA DEPARTMENT OF TRANSPORTATION
AVIATION AND SPACEPORTS OFFICE

Airport: Everglades Airpark (X01)

City: Everglades, Florida

County: Collier County

Owner: Collier County Airport Authority

Role: General Aviation Airport

Located in Collier County on the Gulf Coast of South Florida and surrounded on three sides by the waters of the Everglades National Park, Everglades Airpark serves general aviation activities such as recreational flying and flight training. With its single 2,400-foot runway, the airpark can accommodate small single-engine general aviation aircraft. The airpark's terminal is ideal for serving both local users and those visiting the area.



Existing Facilities

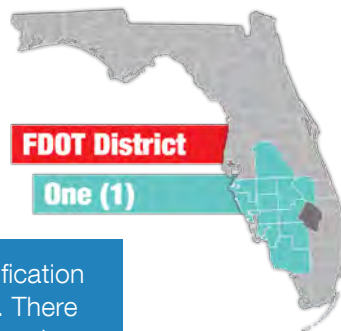
Everglades Airpark is located on 29-acres surrounded on three sides by the waters of the Everglades National Park. The airport features one asphalt runway, designated runway 15/33. This runway measures 2,400 feet by 60 feet and is equipped with medium intensity edge lights. A paved parallel taxiway serves the runway. Other airpark facilities include a 1,800 square-foot passenger terminal building with ten automobile parking spaces. The airpark also currently has two paved tie-down spaces, eight turf tie-down spaces, and eight T-hangars available for parking and storing aircraft. There is a pilot's lounge, flight planning room, and self-service 100 LL fuel available for airpark users.

For more information, please visit X01's website at:

<https://www.colliercountyfl.gov/your-government/divisions-a-e/airport-authority/everglades-airpark>



Airport Classification



Those airports not meeting federal classification criteria are categorized as "Unclassified". There are 243 Unclassified airports nationwide and 1 within Florida: Everglades Airpark. More information can be found in the Federal Aviation Administration's ASSET Studies at https://www.faa.gov/airports/planning_capacity/ga_study/.



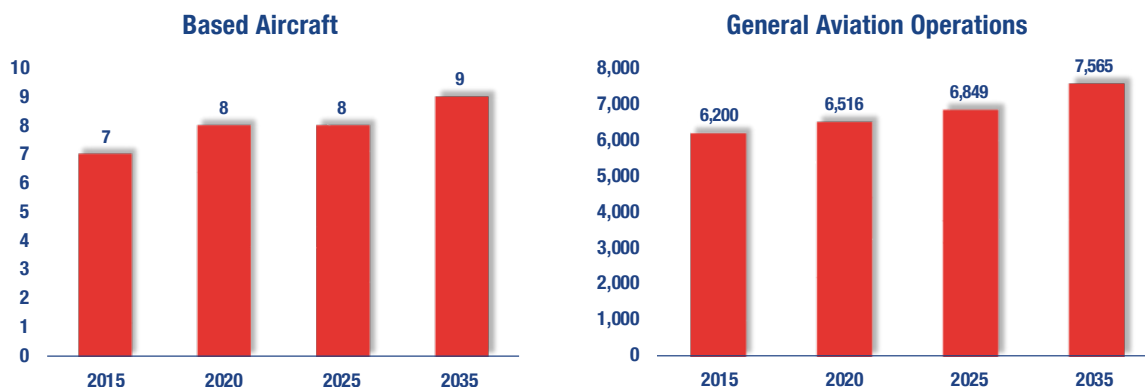


Everglades Airpark accommodates GA aircraft and serves the GA needs of the community. It is considered an eco-tourism airport and acts as a destination for vacationers who come to the area to fish, boat, camp and explore the Everglades. The airpark provides unique air tours over the Everglades. The main activities that occur at the airpark include recreational flying and flight training. There are no flight schools located on the airport's property but it is estimated that roughly 40 percent of the airport's annual operations are related to flight training. Corporate and business activity also occurs on a limited basis at the airpark. Local companies that use the airpark's facilities include fishing guides, tour guides, and air charter companies. The airpark attracts a number of visiting GA aircraft flying in for recreational activities and for stone crab season.



Current and Forecast Demand

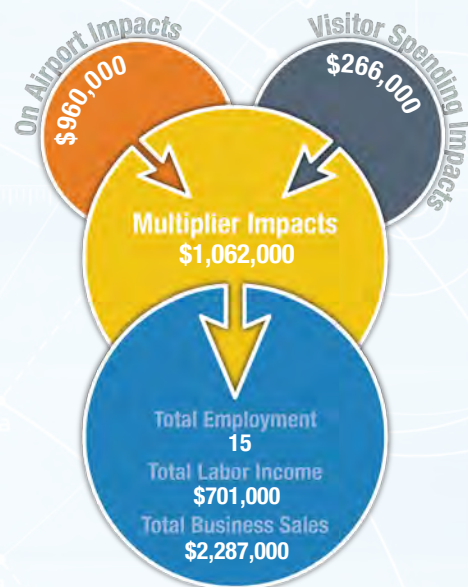
According to Florida Aviation System Plan data, in 2014 there were seven based aircraft and 6,200 total operations at the airpark. For the 12-month period ending on October 26, 2016, approximately 65 percent of all operations were attributable to transient general aviation while 32 percent were due to local general aviation. All of the based aircraft at the airpark are single-engine airplanes and are stored in T-hangars. The largest planes that use the airpark on a regular basis are light twin-engine aircraft. The current Airport Reference Code for Everglades Airpark is B-I. Historic and forecast FDOT aviation activity information on file for Everglades Airpark is as follows:



Economic Impact

The Everglades Air Park is in Collier County along Florida's Gulf Coast, approximately 40 miles southeast of Naples. The air park is uniquely situated; it is surrounded by the Everglades National Park waters on three sides. The air park has one runway that measures 2,400 feet and serves the general aviation needs of the region.

The airport primarily supports recreational flying, environmental patrol, and flight training. Transient passengers visiting Everglades City or flying in for stone crab season usually fly into this air park. To cater to visitors, the air park supplies bicycle rentals and a complimentary shuttle service to local restaurants. The air park is also ideally located to provide air tours over the Everglades; in fact, visitors can only experience such tours from this air park. The air park supports the local community by hosting seasonal Pancake Fly-Ins and accommodates over 50 planes a day for visitors to the Annual Everglades City Seafood Festival.



Other Airport Characteristics

Everglades Airpark is mainly used for recreational flying, flight training, and business activity. Due to its convenient location, the airpark is also occasionally used for local environmental patrols. In order to cater to visitors, the air park supplies bicycle rentals. The air park also engages in the local community by hosting seasonal Pancake Fly-Ins and accommodating visitors that fly in for the Annual Everglades City Seafood Festival.

Current and Future System Service Requirements/Recommendations

The airport's current services include Flight Training, Tourism (CA), Recreational/Sport, Business/Recreational. Overall, the analysis shows that the airport had uniformly low scores. However, in relative terms, the best use of the airport is in Flight Training, Tourism (CA), Recreational/Sport, and Business/Recreational services.

General Aviation Airport Role



FLORIDA DEPARTMENT OF TRANSPORTATION
AVIATION AND SPACEPORTS OFFICE
www.fdot.gov/aviation