

Brooksville-Tampa Bay Regional Airport



FLORIDA DEPARTMENT OF TRANSPORTATION
AVIATION AND SPACEPORTS OFFICE

Airport: Brooksville-Tampa Bay
Regional Airport (BKV)

City: Brooksville, Florida

County: Hernando County

Owner: Hernando County Board of County
Commissioners

Role: General Aviation Airport

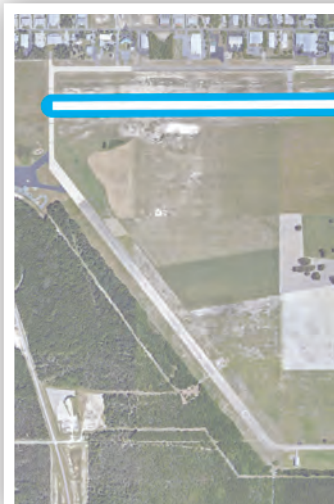
Located approximately six miles south of Brooksville and a half hour north of Tampa, Brooksville - Tampa Bay Regional Airport serves many types of general aviation activities. With its two runways, the longest of which is 7,001 feet, the airport can accommodate all types of general aviation aircraft and business jets. The airport's full-service fixed base operator feature upscale facilities ideal for both recreational and corporate users.



Existing Facilities

Brooksville-Tampa Bay Regional Airport encompasses 2,402 acres and is served by two runways. Runway 09/27 is concrete and measures 7,001 feet by 150 feet. It is equipped with medium intensity runway edge lights and precision approach path indicators. The runway also utilizes the ILS and RNAV GPS instrument approach procedures. Runway 03/21 is concrete and measures 5,014 feet by 150 feet. It is equipped with medium intensity runway edge lights and precision approach path indicators. It utilizes the RNAV GPS instrument approach. Both runways are in good condition and are served by full-length parallel taxiways. Other facilities at the airport include a control tower and a 6,000-square foot terminal building that includes 25 auto-parking spaces. There are currently 50 tie-downs and 100 covered parking spaces between T-hangars, shade hangars, and conventional hangars for GA aircraft at the airport. There is also 100LL fuel and JET-A fuel at the airport to serve the flying public.

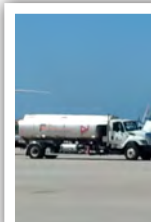
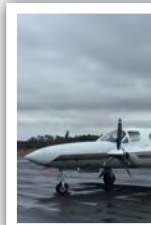
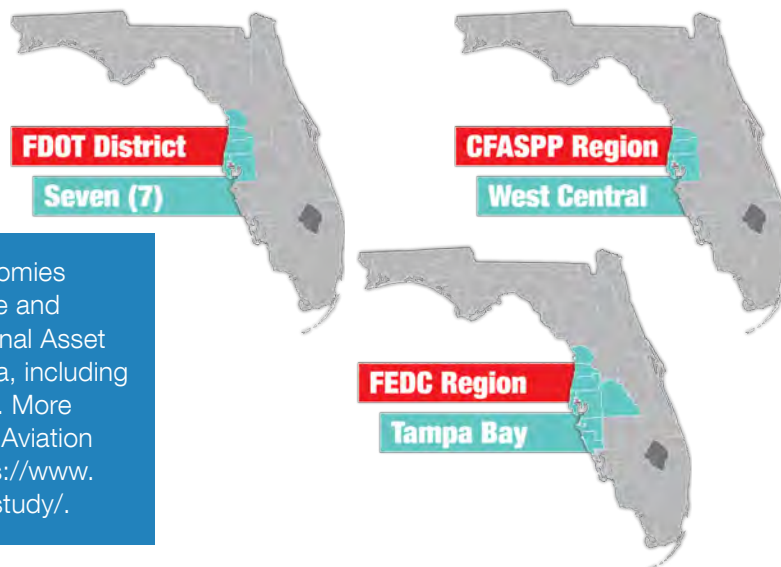
For more information, please visit BKV's website at:
<http://flybkv.com/>



Airport Classification



Regional airports support regional economies by connecting communities to statewide and interstate markets. There are 492 Regional Asset airports nationwide and 30 within Florida, including Brooksville-Tampa Bay Regional Airport. More information can be found in the Federal Aviation Administration's ASSET Studies at https://www.faa.gov/airports/planning_capacity/ga_study/.





Community Service

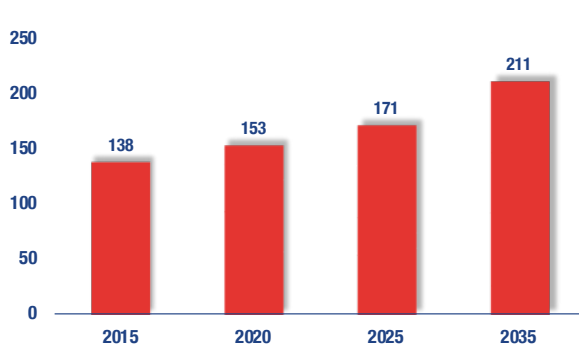


The Brooksville-Tampa Bay Regional Airport serves various GA needs for the region. The airport is mainly utilized for recreational and corporate activity. The airport also accommodates flight training activity and has training programs affiliated with Pasco-Hernando State College. Transient recreational aviators often utilize the airport to visit Florida's Adventure Coast. For the 12-month period ending on December 12, 2016, approximately 51 percent of all operations were attributable to local aviation while 42 percent were due to transient aviation. The airport is also utilized for international medical transport. The airport has based military aircraft and accommodates transient military operations. Approximately 6 percent of the airport's annual operations are attributable to military operations. Army Air National Guard performs the majority of the military operations utilizing assigned Blackhawk helicopters. St. Petersburg-based Coast Guard helicopters and C-130 aircraft also use the airport frequently for training. The airport supports a 2,400-acre industrial complex that includes over 100 businesses.

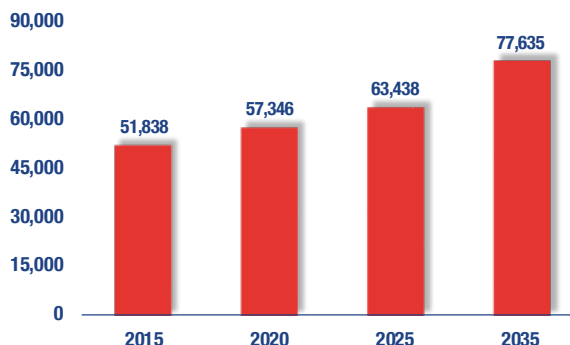
Current and Forecast Demand

The Brooksville-Tampa Bay Regional Airport plays an important role in serving the GA needs of the community. As of 2018, there were 98 based aircraft and a total of 78,000 annual operations at the airport. Of the based aircraft, the majority are single-engine airplanes with the remaining being multi-engine airplanes, military aircraft, jet airplanes, helicopters, and ultralights. Most of the based aircraft are stored in T-hangars, shade hangars, and conventional hangars with the rest stored on paved tie-downs. The largest aircraft that utilize the airport on a regular basis are the Bombardier Challenger 601 and the military C-130. The current Airport Reference Code for the airport is D-IV. Historic and forecast FDOT aviation activity information on file for Brooksville-Tampa Bay Regional Airport is as follows:

Based Aircraft



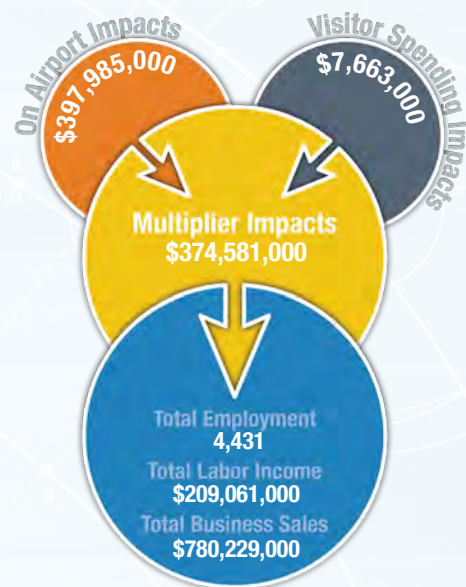
General Aviation Operations



Economic Impact

Brooksville-Tampa Bay Regional Airport is located in Hernando County, approximately 35 miles north of Tampa. The airport has two runways, with the longest runway measuring 7,001 feet. The airport accommodates all types of general aviation aircraft and business jets.

The airport primarily supports corporate business activity, military training, and flight training. The airport assists the region by staging energy companies during hurricane relief efforts. The airport is engaged in the local community, hosting events such as the Florida Agriculture and Wildlife Expo, which attracts over 6,000 people. In addition to the airport's main activities, it also supports recreational flying, aerial photography, and emergency medical aviation. The airport also provides two full-service operators (FBOs) to serve both local and transient users.



Other Airport Characteristics

The Brooksville - Tampa Bay Regional Airport is mainly used for recreational flying, corporate activity, and flight training. The airport also supports a small amount of air taxi operations. Air taxi operations account for about 1 percent of the airport's annual operations.

Current and Future System Service Requirements/Recommendations

The airport provides Recreational/Sport (experimental, ultralights), Business/Recreational (sightseeing, real estate tours, fire-fighting, charter, military, coastal patrol/rescue, medical flights), Flight Training, and Corporate services. The airport plans to increase its flight training, recreational, and charter operations, as well as constructing a cargo complex to attract cargo operations. The analysis indicates that the airport is best suited for providing Recreational/Sport, Tourism (CA), Flight Training, Corporate, and Business/Recreational services, and Air Cargo Services.

Based on the infrastructure planning analysis for Brooksville-Tampa Bay Regional Airport, the following depicts the airport's current levels of service, as well as the types and levels of service that the airport will likely be required to accommodate by the year 2030:



Commercial Service Role



FLORIDA DEPARTMENT OF TRANSPORTATION
AVIATION AND SPACEPORTS OFFICE
www.fdot.gov/aviation