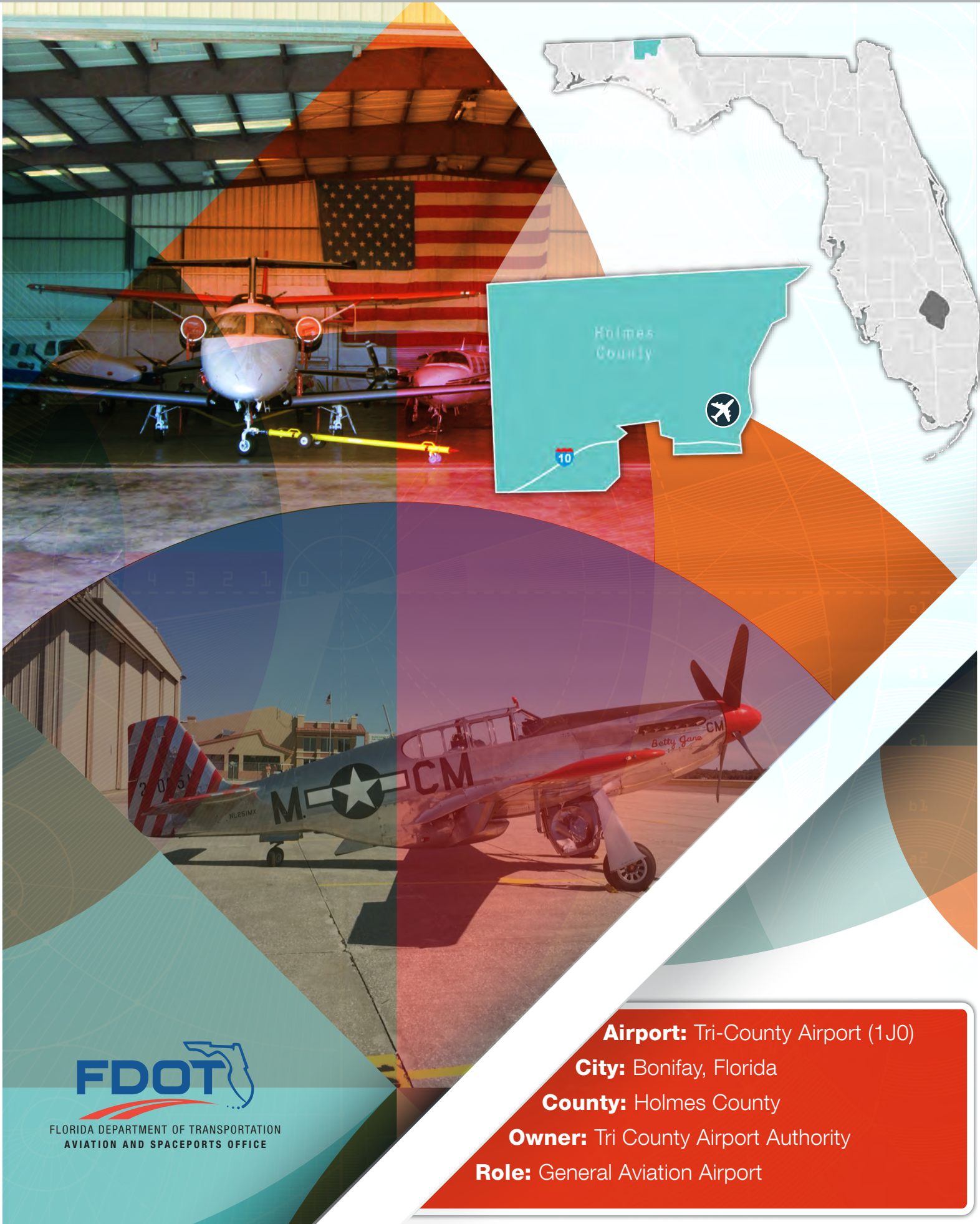


Tri-County Airport



FLORIDA DEPARTMENT OF TRANSPORTATION
AVIATION AND SPACEPORTS OFFICE

Airport: Tri-County Airport (1J0)

City: Bonifay, Florida

County: Holmes County

Owner: Tri County Airport Authority

Role: General Aviation Airport

Located approximately six miles northeast of Bonifay, Tri-County Airport serves a variety of general aviation activities, including recreational activity and flight training. With its single 4,000-foot runway, the airport accommodates multi-engine general aviation aircraft. The airport's terminal is ideal for serving local users as well as those visiting the area.



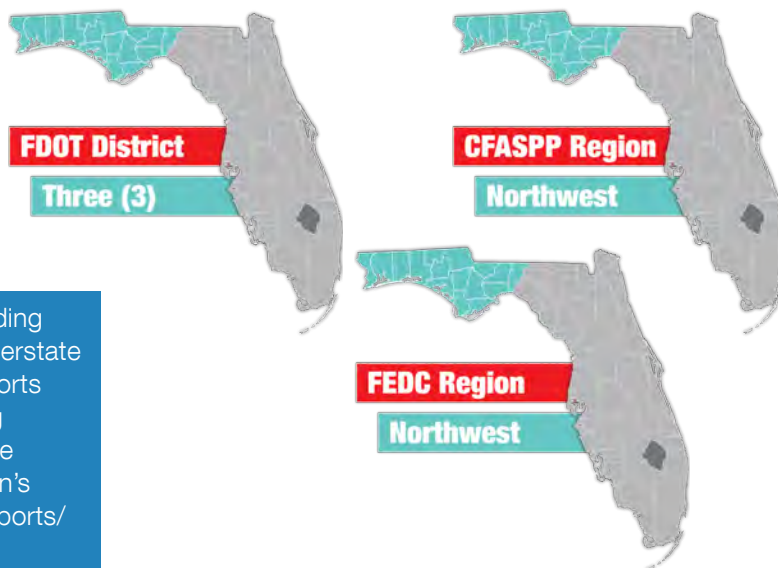
Existing Facilities

Deriving its name from its location near the intersection of Holmes, Washington, and Jackson County, Tri-County Airport is a general aviation facility that supports a range of recreational and flight training aviation activity. Tri-County Airport features a single runway, runway 1/19, measuring 4,000 feet long by 75 feet wide, paved with asphalt in fair condition. The runway is equipped with medium intensity edge lighting, PAPI visual slope indicators, as well as an RNAV GPS approach on runway 19. The runway and parallel taxiway recently underwent an extension and rehabilitation. Full service fueling is also available with AvGas and jet fuel. The airport also includes a 1,200-square foot general aviation terminal building with 16 automobile parking spaces. Currently, the airport offers nine tiedown spaces and eight shade hangars for aircraft parking.

For more information, please visit 1J0's website at:
<https://tricountyairport.wordpress.com/>



Airport Classification



Local airports serve communities by providing access to primarily intrastate and some interstate markets. There are 1,278 Local Asset airports nationwide and 29 within Florida, including Tri-County Airport. More information can be found in the Federal Aviation Administration's ASSET Studies at https://www.faa.gov/airports/planning_capacity/ga_study/.





Community Service



Tri-County Airport supports a variety of general aviation needs, chiefly recreational flying and flight training activity, with some operations related to local businesses and visiting aircraft. In an effort to improve its services to the local community, several improvement projects have recently been completed, including apron rehabilitation, construction of nine new box hangars, installation of solar powered lights, and rehabilitation and extension of the runway and taxiway.

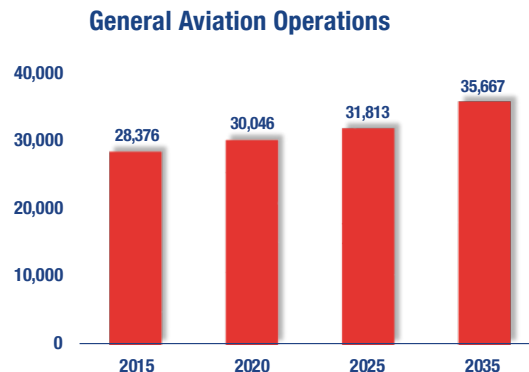
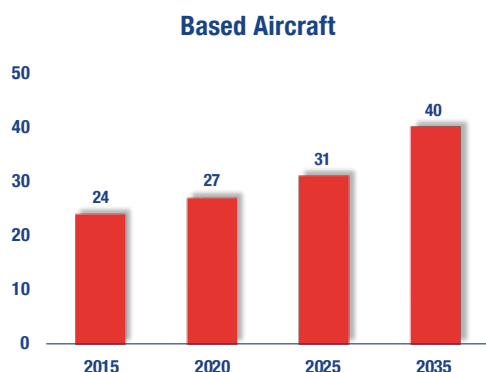
Operations related to flight training constitute the majority of aviation activity at Tri-County Airport. Two tenants are responsible for most of this training activity: Camelot Aviation and the Baptist College of Florida. The Baptist College of Florida operates its Mission Aviation Center on a four-acre site at Tri-County Airport where flight training is provided by qualified and experienced instructors.

Tri-County Airport is overseen by a fifteen-member airport authority comprised of residents from each of the three surrounding counties, ensuring the airport's future role aligns with the needs and desires of the local community. The airport also accommodates a high number of military operations each year, mostly from US Army helicopters operating out of the nearby Fort Rucker in Enterprise, Alabama.



Current and Forecast Demand

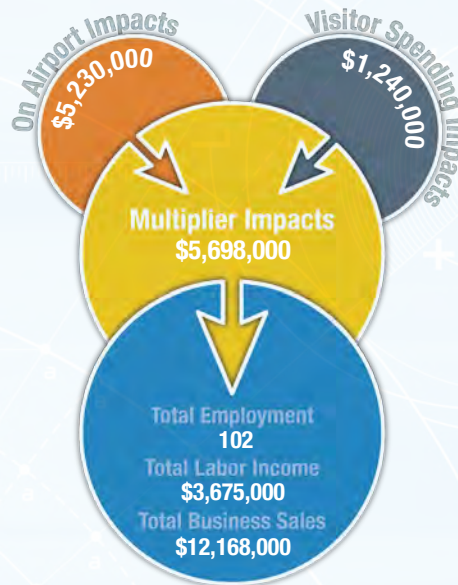
According to Florida Aviation System Plain data, in 2014 there were 28,272 general aviation operations at Tri-County Airport. During the same time period, there were 24 aircraft based at the airport. In addition, Tri-County supports a large number of military operations, usually from US Army helicopters flying out of the nearby Fort Rucker in Enterprise, Alabama. For the twelve-month period ending on March 13, 2017, airport management estimates that at least 20,000 military operations occurred. This translates to 70 percent of all operation at Tri-County during that time period, with the remaining 30 percent being attributable to local and transient general aviation. Historic and forecast FDOT aviation activity information on file for Tri-County Airport follows:



Economic Impact

Tri-County Airport is located in Holmes County, approximately 60 miles north of Panama City. The airport has one runway, measuring 4,000 feet. The airport accommodates multi-engine general aviation aircraft and serves a variety of general aviation activities for local and visiting users.

The airport primarily supports recreational flying. Transient pilots also occasionally refuel at the airport. The forest service uses the airport for environmental patrol and fire spotting, and private instructors conduct flight trainings and military trainings at the airport. The local sheriff's helicopter is based at the airport, supporting local law enforcement. The airport hosts the Experimental Aircraft Association (EAA) Young Eagle's annual Fly-In and provides free flights for children. The airport also supports agricultural spraying, business activity, aerial photography, and emergency medical aviation. Aircraft maintenance is also provided at the airport for local and transient users.



Other Airport Characteristics

In the future, management hopes to continue to expand Tri-County Airport's general aviation services. Airport management also reports that aviation activity related to fire spotters and medevac services are also supported by the airport.

Current and Future System Service Requirements/Recommendations

At the time of this review, airport management reports several ongoing improvement projects/activities at the airport, including a stormwater master plan. The airport anticipates future activities and improvement projects such as additional T-hangars, an extended ramp, addition of Jet A fuel farm, a full-length taxiway, a building for industrial development, and extension of the runway to the south. The airport serves flight training and recreational/sport aviation needs. It plans to continue serving these needs. Additionally, the airport would like to provide air cargo services as a hub for UPS or FedEx. The airport is also interested in a training facility, an air taxi operation, and the development of an industrial park. Acreage has been designated and funds are being sought for the development of an industrial park and hangar to be used to attract industry to Tri-County.

General Aviation Airport Role



Flight Training



Recreational/Sport



FLORIDA DEPARTMENT OF TRANSPORTATION
AVIATION AND SPACEPORTS OFFICE
www.fdot.gov/aviation