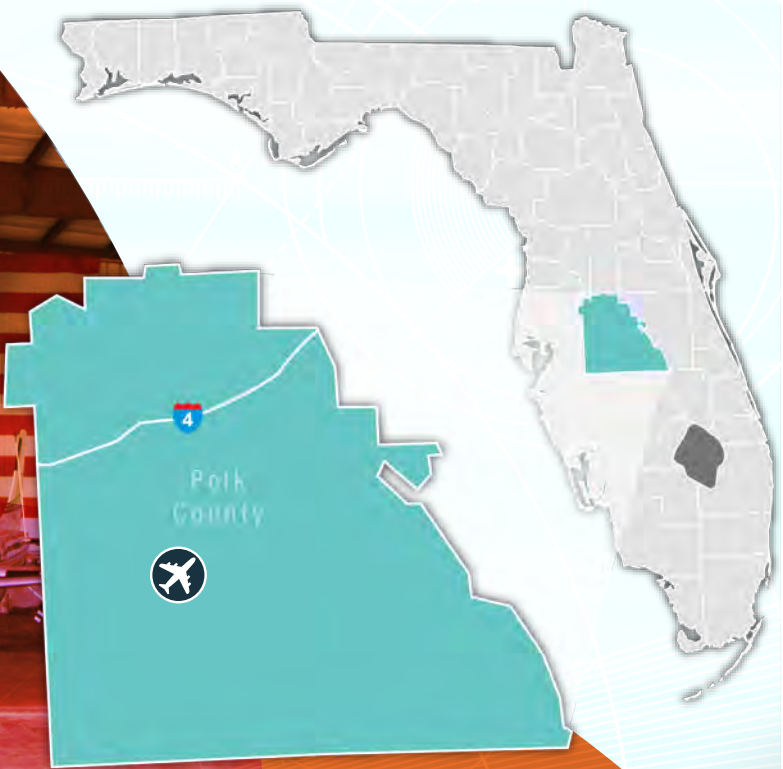


Bartow Municipal Airport



FLORIDA DEPARTMENT OF TRANSPORTATION
AVIATION AND SPACEPORTS OFFICE

Airport: Bartow Municipal Airport
(BOW)

City: Bartow, Florida

County: Polk County

Owner: Bartow Municipal Airport
Development Authority

Role: General Aviation Airport

Located in Polk County, approximately 45 miles east of Tampa, Bartow Municipal Airport serves many types of general aviation activities. With its three runways, two of which are 5,000 feet long, the airport can accommodate smaller general aviation business jet aircraft. The airport's terminal is ideal for serving local users as well as those visiting the area.



Existing Facilities

Facilities at the Bartow Municipal Airport include runway 05/23, runway 9L/27R and runway 9R/27L. Runway 05/23 is asphalt and measures 5,000 feet by 100 feet. It is equipped with medium intensity runway edge lights, runway end identifier lights, and precision approach path indicators. The runway also utilizes the RNAV GPS instrument approach procedure. Runway 9L/27R is asphalt and measures 5,000 feet by 150 feet. It is equipped with medium intensity runway edge lights, runway end identifier lights, and precision approach path indicators. The runway utilizes the RNAV GPS and the VOR/DME instrument approach procedures. Runway 9R/27L is asphalt and measures 4,400 feet by 150 feet. All of the runways are served by partial taxiways that measure 50 feet wide. Other airport facilities include a 20,000 square-foot terminal building with a restaurant to serve pilots and passengers. There are 82 auto parking spaces to serve the terminal. There are 32 tiedown spaces and 107 corporate and T-Hangars at the airport to store GA aircraft. The airport also has a control tower and 100LL fuel and JET-A fuel available.

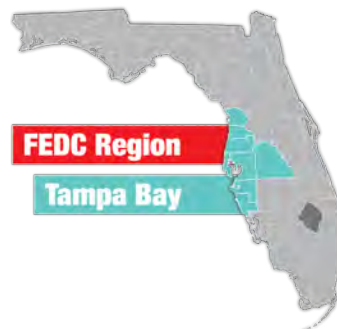
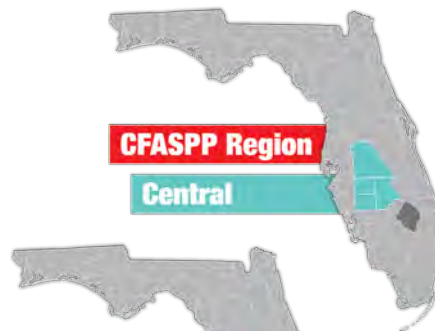
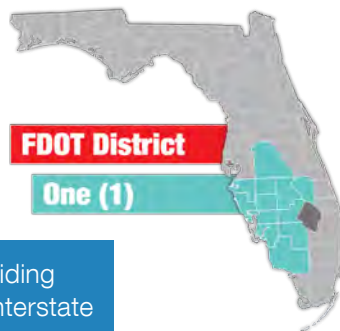
For more information, please visit BOW's website at:
<http://bartow-airport.com/>



Airport Classification



Local airports serve communities by providing access to primarily intrastate and some interstate markets. There are 1,278 Local Asset airports nationwide and 29 within Florida, including Bartow Municipal Airport. More information can be found in the Federal Aviation Administration's ASSET Studies at https://www.faa.gov/airports/planning_capacity/ga_study/.



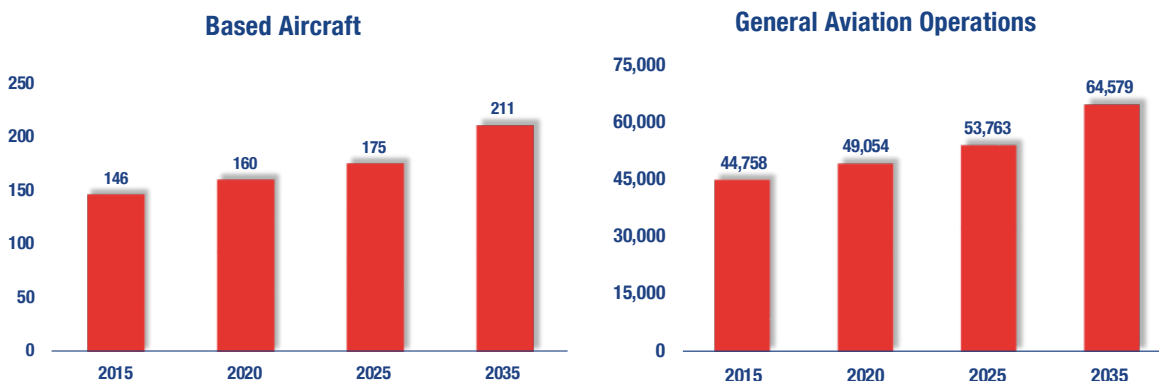


Bartow Municipal Airport serves the GA needs of the region. Flight trainings occur frequently due to the presence of a flight school with three based aircraft on airport. Roughly 60 percent of the airport's annual operations are related to flight training. The airport also supports frequent business traffic. The airport estimates that 30 percent of its annual operations are business related and that approximately 10 percent of the airport's based aircraft are owned by local businesses. Local companies that use the airport's facilities include the citrus industry, golf resort industry, and various aviation-related companies. The airport also attracts a number of transient GA aircraft. For the 12-month period ending on July 13, 2017, approximately 52 percent of all operations were attributable to transient aviation, while 48 percent were due to local aviation. While the airport does not have any based military aircraft, it does accommodate a small amount of transient military operations. Military operations make up about 1 percent of the airport's annual operations and are performed primarily by visiting National Guard helicopters. The airport is also utilized on occasion for agricultural spraying, and local law enforcement and mosquito control utilize the airport to benefit the local community.



Current and Forecast Demand

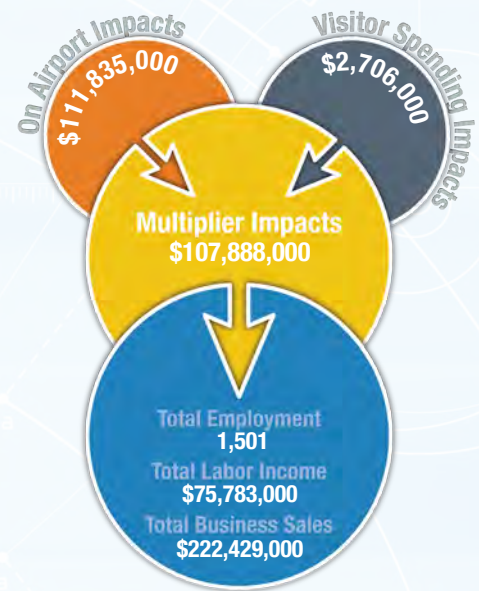
The Bartow Municipal Airport plays an important role in serving many different facets of GA. As of 2014, there were 101 based aircraft and a total of 27,759 annual operations at the airport. Of the based aircraft, the majority are single-engine airplanes with the remaining being multi-engine airplanes, jet airplanes, and helicopters. Most of these based aircraft are stored in T-hangars or corporate hangars. The airport presently reports a waiting list for hangars. The largest planes that use the airport on a regular basis include the Beech King Air 350 and Gulfstream IV/V. The current Airport Reference Code is C-III. Historic and forecast FDOT aviation activity information on file for the Bartow Municipal Airport is as follows:



Economic Impact

Bartow Municipal Airport is in Polk County, approximately 45 miles east of Tampa. The airport has three runways, with the longest two measuring 5,000 feet each. The airport accommodates smaller general aviation business jet aircraft and serves many types of general aviation activities. The airport's terminal is ideal for serving both local and transient users.

The airport primarily supports recreational flying, but it is occasionally used for agricultural spraying and mosquito control. The airport also supports business activity for the golf resort industry and local citrus industry, and takes part in the preservation of a large area of wetlands. There is a growing flight school at the airport that is use by multiple flight instructors. Services based at the airport include emergency medical aviation, such as emergency helicopter transport, and the sheriff's department, which provide police and law enforcement. An aircraft paint shop and aircraft maintenance business are also at the airport.



Other Airport Characteristics

The Bartow Municipal Airport mainly accommodates GA flight training and business activity. The airport is also utilized for emergency medical transport and law enforcement takes place at the airport with the sheriff's department based there. A large industrial park is located on the north side of the airport property and is 95 percent occupied.

Current and Future System Service Requirements/Recommendations

The airport provides Flight Training, Corporate, and Business/Recreational services. The Business/Recreational services are in the form of medical flights, agricultural spraying, environmental patrols, firefighting, and real estate tours. The airport recently built a new GA terminal to provide Corporate services with the intent to serve aircraft as large as a 737. Its high scores for Flight Training, Corporate, and Business/Recreational services indicate that it will continue to serve these needs in the future. The airport would also like to become a cargo hub, but its runway length of just over 5,000 feet makes it unsuitable for Air Cargo service according to the analysis. Although the analysis resulted in a high quotient in Recreational/Sport category, the airport indicated a reluctance to focus on that service; therefore, it was not considered in future service categories.

General Aviation Airport Role



Flight Training



Corporate



Business/Recreational



FLORIDA DEPARTMENT OF TRANSPORTATION
AVIATION AND SPACEPORTS OFFICE
www.fdot.gov/aviation