

Bob White Field



FLORIDA DEPARTMENT OF TRANSPORTATION
AVIATION AND SPACEPORTS OFFICE

Airport: Bob White Field (X61)

City: Zellwood, Florida

County: Orange County

Owner: Tailwheel Holding Company

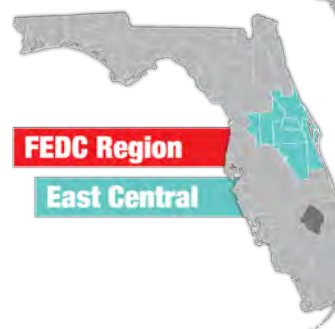
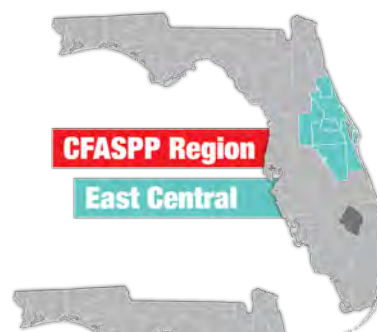
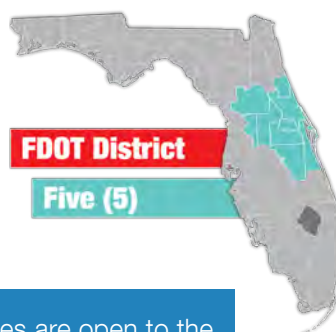
Role: General Aviation Airport

Located in Orange County, approximately one mile west of Zellwood, Bob White Field serves the general aviation needs of the local community. With its single 3,300-foot turf runway, the airport can accommodate small multi-engine GA aircraft.

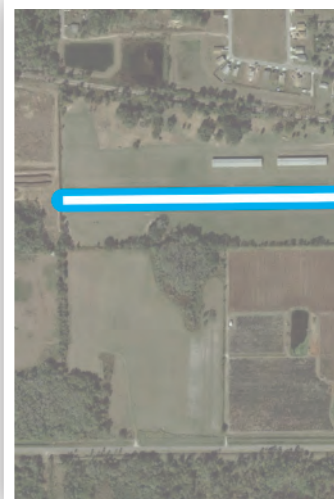
Existing Facilities

Bob White Field is served by one turf runway, runway 9/27. The runway is in good condition and measures 3,300 feet long by 150 feet wide. The airport also has a 240 square-foot terminal with 15 automobile parking spaces to serve its GA pilots and passengers. Between the enclosed T-hangars and the open-sided shade hangar there are a total of 73 covered spaces for aircraft at the airport

Airport Classification



Twenty-three privately-owned aviation facilities are open to the public throughout Florida including Bob White Field. These facilities generally comprise fly-in communities with grass strips or contain short paved runways that primarily serve the recreational general aviation public. Although these facilities are owned and operated by private individuals or companies, the facilities are open to the public for aviation use.





Community Service



Bob White Field opened to the public in 1963 and serves the GA needs of the local community. The main activity that occurs at the airport is recreational and sport flying. Approximately 55 aircraft operations occurred daily in 2017. The airport is also used for housing antique, classic, experimental, and home-built aircraft. Flight training is another component of this airport's GA activity, with approximately five percent of the airport's annual operations related to flight training. Bob White Field does not have a flight school but local private instruction is offered and many of Florida's flight instructors are based at the airport because of its convenient location. The airport does not have aviation training programs that are connected with any of the local colleges, universities, or technical schools. The majority of the airport's users are local pilots. In 2017, approximately 60 percent of operations were due to local aircraft while about 40 percent of operations were due to transient aircraft. The airport also occasionally acts as a staging area for filming and other community events. There is a repair and maintenance shop located at the airport that serves local and transient users' needs.

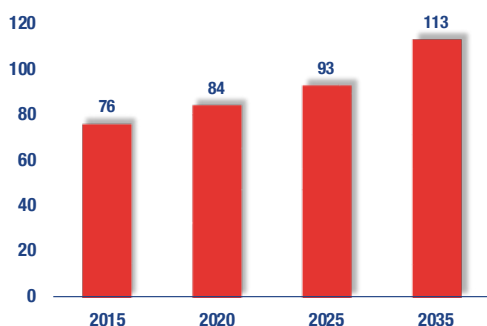


Current and Forecast Demand

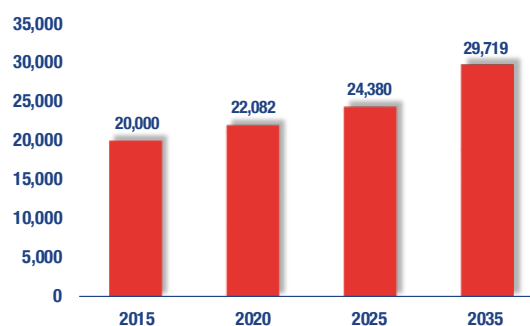
COMMERCIAL AND GENERAL AVIATION

Bob White Field plays an important role in serving the GA and recreational flying needs of the local region. As of 2014, there was a total of 76 based aircraft, with the majority being single-engine airplanes. Of the total based aircraft, approximately four percent are stored on paved tie-downs and 96 percent are in T-hangers or conventional hangars. There was also a total of 20,000 annual operations in 2017. The largest plane that uses the airport on a regular basis is a Cessna 310.

Based Aircraft



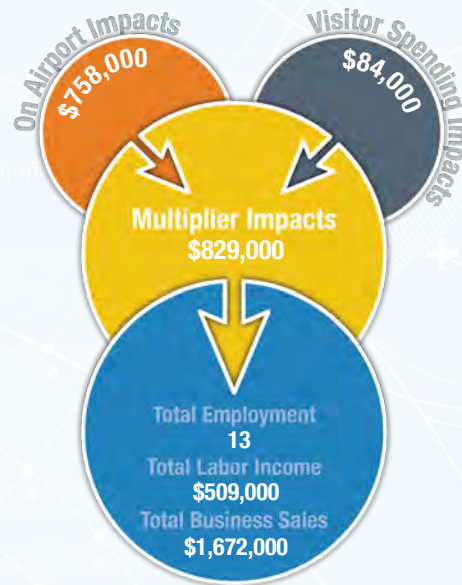
General Aviation Operations



Economic Impact

Bob White Field is located in Orange County, approximately 20 miles northwest of Orlando. The airport has one runway that measures 3,300 feet long. The airport serves the general aviation needs of the local community by accommodating small general aircraft.

The main activity that occurs at the airport is recreational and sport flying. The airport is also used for housing antique, classic, and home-built aircraft. The airport is engaged in the local community and hosts film events and an Annual Fly-In event. Bob White Field does not have a flight school but many of Florida's flight instructors are based at this airport because of its convenient location. There is also a repair maintenance shop located at the airport that serves local and transient users.



Other Airport Characteristics

Recreational flying and flight training highlight Bob White Field's popularity. There are no based military aircraft and no military operations take place at the airport. The airport is also engaged in the local community and hosts a Fly-In event every year.

Current and Future System Service Requirements/Recommendations

The airport provides Recreational/Sport (experimental, ultralights) and Business/Recreational (sightseeing, real estate tours, agricultural spraying, maintenance on antique aircraft), and Flight Training (in the form of independent flight instructors - there are no flight schools). The airport does not plan on increasing any of its activities, but would like to build more T-hangars. Flight training is actively discouraged at the airport through the imposition of a landing fee on transient aircraft. Analysis indicates that the airport is best suited for providing Recreational/Sport and Tourism (CA) services.

General Aviation Airport Role



FLORIDA DEPARTMENT OF TRANSPORTATION
AVIATION AND SPACEPORTS OFFICE
www.fdot.gov/aviation