

Costin Airport



FLORIDA DEPARTMENT OF TRANSPORTATION
AVIATION AND SPACEPORTS OFFICE

Airport: Costin Airport (A51)

City: Port St. Joe, Florida

County: Gulf County

Owner: Costin Aviation, Inc

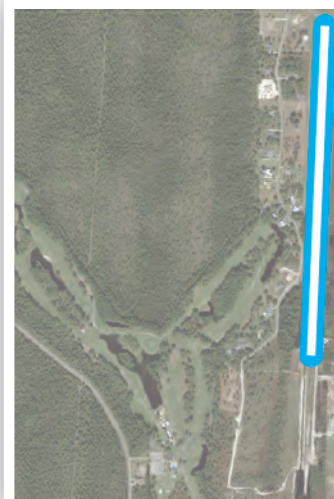
Role: General Aviation Airport

Located in Gulf County, approximately two miles south of Port St. Joe, Costin Airport serves the general aviation needs of the local community. With its single 4,230-foot turf runway, the airport can accommodate small multi-engine and single-engine general aviation aircraft.

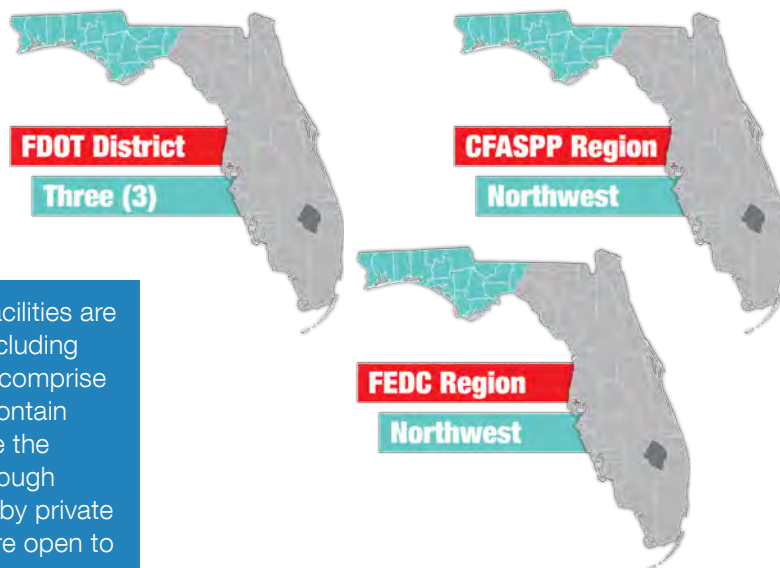


Existing Facilities

Facilities at the Costin Airport are minimal. The airport includes one runway, runway 18/36. Runway 18/36 is turf, marked by white PVC pipes, and measures 4,230 feet by 65 feet. There is a \$10.00 landing fee and a \$5.00 per night tie down fee for airport users.



Airport Classification



Twenty-three privately-owned aviation facilities are open to the public throughout Florida including Costin Airport. These facilities generally comprise fly-in communities with grass strips or contain short paved runways that primarily serve the recreational general aviation public. Although these facilities are owned and operated by private individuals or companies, the facilities are open to the public for aviation use.



Florida by the Numbers

Approximately half of all visitors arrive by air

- Florida's airports are often the first and last impression of our state

20 commercial service airports

- 4 large hubs; more than any other state
- Florida ranked second in the nation (2016) for airline passenger volume
- Serves approximately 10% of national passengers

109 general aviation airports

- 9 national ASSET airports
- 6% of general aviation aircraft fleet
- Leading number of pilot certificates in 4 categories

Largest U.S. gateway for Latin American air cargo

Home to the **SUN 'n FUN International Fly-in Expo**, one of the **largest general aviation expos in the world**

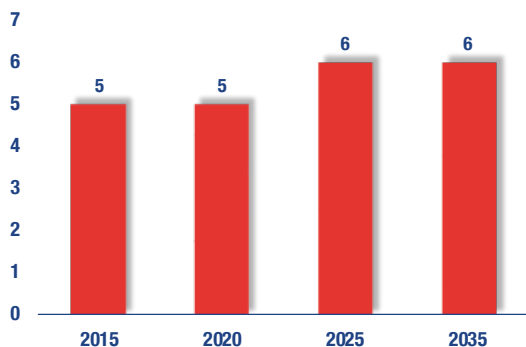
Community Service

Costin Airport accommodates GA aircraft and serves the GA needs of the region. The airport is a part of a residential community with many personal planes based on the strip. Yet, the majority of the airport's users are visiting pilots that come to spend time at Port St. Joe, beaches and other various tourist areas. For the 12-month period ending on April 28, 2017, approximately 62 percent of all operations were attributable to transient aviation while about 37 percent of operations were due to local aviation. The airport currently focuses on business activity with about 60 percent of its annual GA operations being business-related. There are no tenants on site at the airport but an aerial photography business utilizes it 2 to 3 times a week. Recreational flying is another popular GA use of the airport. Flight instructors also occasionally utilize the airport for flight training and military training. There are no aviation training programs that are connected with local colleges, universities, or technical schools.

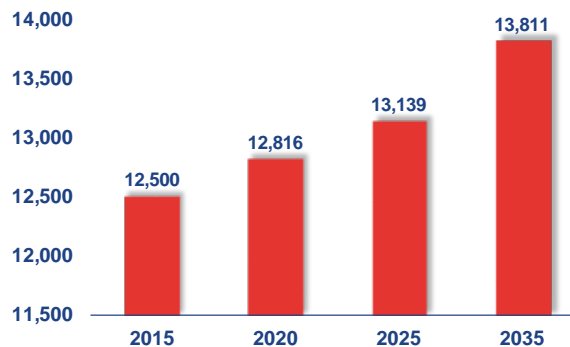
Current and Forecast Demand

Costin Airport plays an important role in serving different facets of GA for the community. As of 2014, there were 5 based aircraft and 12,500 total operations at the airport. The based aircraft consist of single engine airplanes. The largest aircraft that use the airport on a regular basis are light twin-engine aircraft and the airport's current Airport Reference Code is B-I which includes aircraft such as the Beechcraft King Air, Cessna Citation Mustang, and Piper Cheyenne. Historic and forecast FDOT aviation activity information on file for Costin Airport is as follows:

Based Aircraft



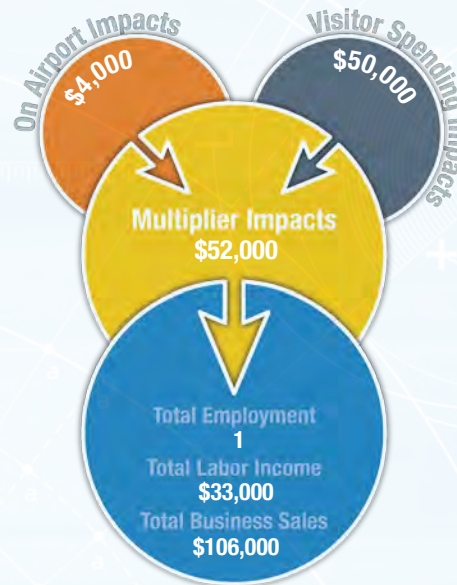
General Aviation Operations



Economic Impact

Costin Airport is the only airport in Gulf County, located approximately two miles south of Port St. Joe. The airport has one turf runway, measuring 4,230 feet. The airport accommodates small general aviation aircraft and serves the general aviation needs of the local community.

The airport is a part of a residential community and has several personal planes based on the strip. The airport primarily supports tourism from renters with a second home in the area and visitors who fly in for the beaches or scalloping. An aerial photography business uses the airport two to three times a week. Flight instructors also use the airport for flight trainings and military trainings, and police also occasionally use the airport for law enforcement purposes and search and rescues. There are limousine and taxi services available at the airport to serve visiting users.



Other Airport Characteristics

The main activities that occur at the airport are business activity and recreational flying. There are no based military aircraft at the airport but transient military operations make up approximately 2 percent of the annual operations.

Current and Future System Service Requirements/Recommendations

At the time of this review, airport management reports no current airside or landside improvement projects on the immediate horizon. It is assumed that the airport will continue to serve primarily recreational/sport and corporate services. It should be noted that the airport reports that 60% of its operations are business related and that 25% of based aircraft are owned by businesses, further showing that the airport is indeed serving corporate activity.

General Aviation Airport Role



FLORIDA DEPARTMENT OF TRANSPORTATION
AVIATION AND SPACEPORTS OFFICE
www.fdot.gov/aviation