

# Lake City Gateway Airport



FLORIDA DEPARTMENT OF TRANSPORTATION  
AVIATION AND SPACEPORTS OFFICE

**Airport:** Lake City Gateway Airport  
(LCQ)

**City:** Lake City, Florida

**County:** Columbia County

**Owner:** City of Lake City

**Role:** General Aviation Airport



Located in Columbia County in northern Florida, approximately 60 miles west of Jacksonville, Lake City Gateway Airport serves a variety of general aviation activities. With its two intersecting runways, the longest of which is 8,003 feet, the airport can accommodate large jet aircraft including the C130, KC10, and Boeing 747, 757, and 767. The airport's newly built terminal is ideal for serving both local users as well as those visiting the area.



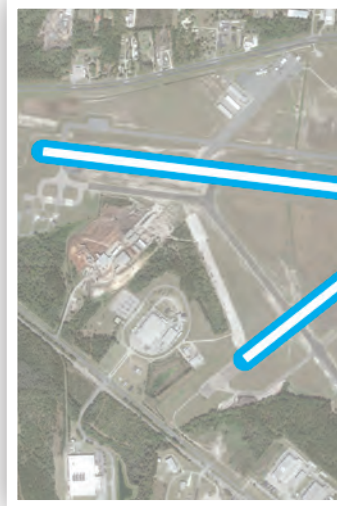
## Existing Facilities

Lake City Gateway Airport features two intersecting asphalt runways: runway 10/28 and runway 5/23. The main runway, runway 10/28, measures 8,003 feet long by 150 feet wide and is equipped with medium intensity edge lights, precision approach path indicator lights, non-precision markings, runway end lights, and RNAV GPS instrument approaches. Runway 5/23 is 4,000 feet long by 75 feet wide and is equipped with basic markings and medium intensity edge lights.

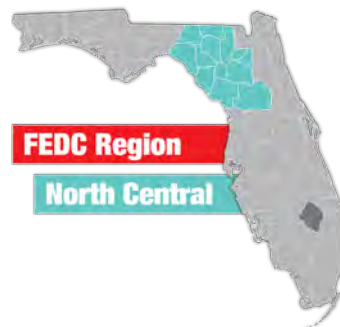
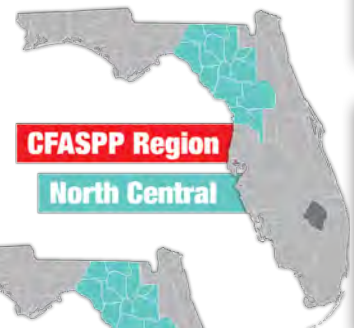
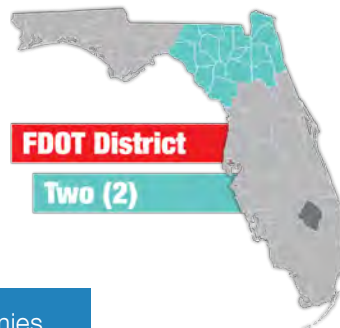
The airport includes a new 6,000 square foot general aviation terminal that includes pilot lounges, flight planning areas, a conference room, and over 60 paved automobile parking spaces. The City of Lake City acts as the fixed base operator at the airport and offers a full range of general aviation services, including fueling (both 100LL Avgas and Jet A fuel), ground handling, and courtesy cars. Aircraft parking and storage is accommodated by the airport's 20 T-hangars, 5 box hangars, and 35 tie-down parking spaces. The airport also leases nine large hangars to airport tenant business HAECO. Lake City Gateway also has an air traffic control tower that is attended from 1:00pm to 9:30pm, Monday to Friday.

For more information, please visit LCQ's website at:

<http://www.lcfla.com/index.php/departments/gateway-airport-klcq>



## Airport Classification



Regional airports support regional economies by connecting communities to statewide and interstate markets. There are 492 Regional Asset airports nationwide and 30 within Florida, including Lake City Gateway Airport. More information can be found in the Federal Aviation Administration's ASSET Studies at [https://www.faa.gov/airports/planning\\_capacity/ga\\_study/](https://www.faa.gov/airports/planning_capacity/ga_study/).







Lake City Gateway Airport is an important regional general aviation facility. It primarily supports recreational and business-related aviation activity, as well as frequent military and aerial firefighting operations. Recreational aviation activity is due to local users and transient flyers who frequently stop by Lake City Gateway on flights to and from other parts of Florida. Lake City Gateway often hosts military operations, usually from training flight by P-3C Orions from Naval Air Station Jacksonville and C-130 Hercules and A-10 Thunderbolts from Moody Air Force Base in south Georgia. Aerial firefighting operations are conducted by the USDA Forest Service, who maintains an air tanker base at the airport to serve the southern region of the United States.

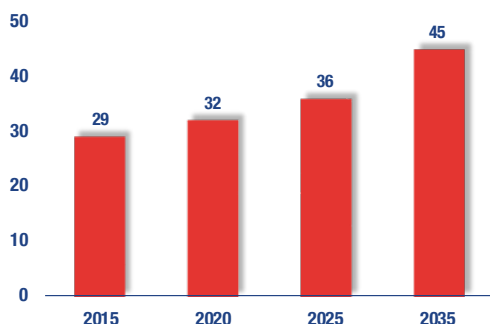
The airport is home to several large tenants that are essential parts of the local and regional economy. HAECO Americas leases nine large aircraft hangars and 18 additional buildings at Lake City Gateway, where the company conducts maintenance, repair, and overhaul services for Boeing and Airbus commercial airliners. Adjacent to HAECO's facilities is the campus of Florida Gateway College, an important regional state college. Other major tenants the airport include a lumber mill operated by Great South Timber and Lumber Company and two large mobile home manufacturing facilities occupied by Homes of Merit and Champion Home Builders. Several other large manufacturing and distribution facilities are located nearby off airport property and the airport's close proximity to the junction of I-10 and I-75 make the area around Lake City Gateway Airport an important hub for regional commerce.



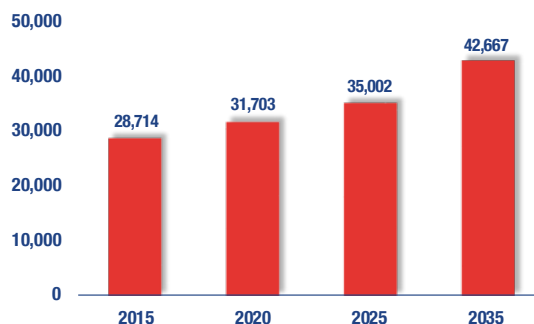
## Current and Forecast Demand

According to Florida Aviation System Plan data, in 2014 there were 32 aircraft based at Lake City Gateway Airport. During the same time period, there were 1,300 commercial operations and 27,404 general aviation operations, for a total of 28,714 operations. For the 12-month period ending on April 25, 2017, 48 percent of all operations were transient general aviation, 39 percent were local general aviation, nine percent were military, and five percent were air taxi. The current Airport Reference Code for Lake City Gateway Airport is C-III which is represented by aircraft such as the Boeing 737, the Airbus A321, and the Embraer E-190.

**Based Aircraft**



**General Aviation Operations**

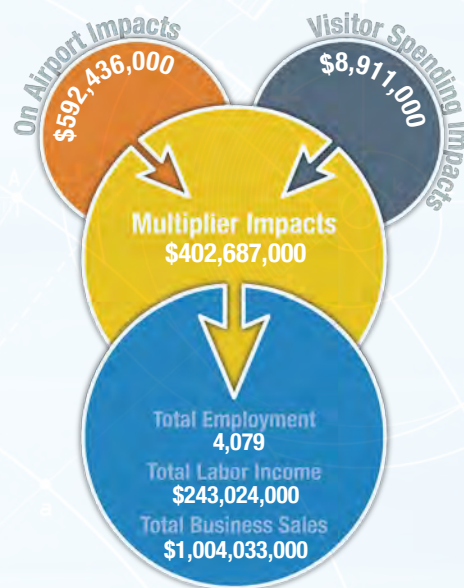




# Economic Impact

Lake City Airport is in Columbia County, approximately 57 miles west of Jacksonville. The airport has a terminal and two intersecting runways, with the longest runway measuring 8,003 feet. The airport accommodates large jet aircraft and serves a variety of general aviation activities for local and visiting users.

The airport primarily supports recreational flying and business activity. Flight instructors are also based at the airport and conduct both flight trainings and educational trainings focused on aircraft maintenance. The USDA Forest Service uses the airport for aerial wildland firefighting use. An Air Tanker Base based at the airport serves the nation's southern region. The airport also supports agricultural spraying, aerial photography, and emergency medical aviation. There are courtesy car, limousine, and taxi services at the airport to serve user's needs.



## Other Airport Characteristics

Lake City Gateway was originally built as a naval air station during World War II. After being decommissioned at the end of the war, the airport was given to the City of Lake City and reopened as Lake City Municipal Airport.

## Current and Future System Service Requirements/Recommendations

The airport has recently constructed a new 6,000 square-foot FBO/Terminal building which was completed in 2012. The airport primarily services business and flight training related activities along with a moderate amount of recreational/sport and charter/air taxi usage. Flight training is offered at the airport by one school which employs two instructors. The airport believes that air cargo operations are a possibility in the future. Management anticipates continued flight training activity, along with charter/air taxi, business, and recreational/sport usage. The analysis indicates that the airport has a sufficient amount of land to support expansion. There is sufficient capacity to support increases in operations through the planning period. The runway is adequate to accommodate larger multi-engine and jet aircraft traffic, serving business and corporate demand in the near term and potentially tourism and air cargo activities by the end of the long-term planning period. Tourism activity, however, would rely upon an upturn in socioeconomic activity.

### General Aviation Airport Role



Flight Training



Recreational/Sport



Business/Recreational



FLORIDA DEPARTMENT OF TRANSPORTATION  
AVIATION AND SPACEPORTS OFFICE  
[www.fdot.gov/aviation](http://www.fdot.gov/aviation)