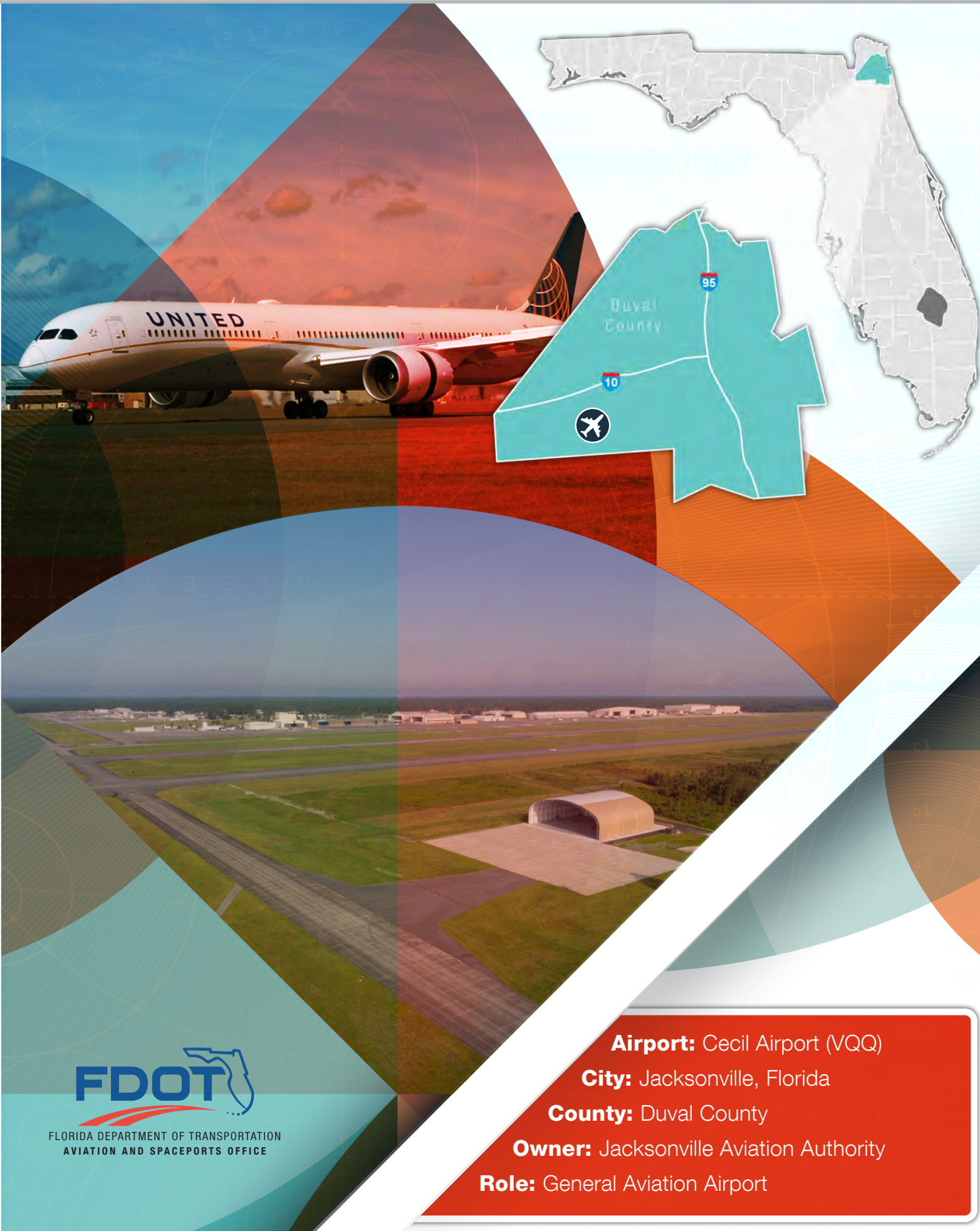


Cecil Airport



FLORIDA DEPARTMENT OF TRANSPORTATION
AVIATION AND SPACEPORTS OFFICE

Airport: Cecil Airport (VQQ)

City: Jacksonville, Florida

County: Duval County

Owner: Jacksonville Aviation Authority

Role: General Aviation Airport

Located in southwest Duval County, Cecil Airport supports a variety of general aviation and industrial activities for the north Florida and southeast Georgia aviation community. With its two sets of parallel intersecting runways, the longest of which is 12,503 feet, the airport can accommodate all types of general aviation and commercial aircraft, as well as large military jet aircraft. The airport's terminal is ideal for serving local users as well as those visiting the area.



Existing Facilities

Cecil Airport's extensive facilities include the following four runways: runway 18L/36R (12,503 feet by 200 feet), runway 9R/27L (8,003 feet by 200 feet), runway 18R/36L (8,002 feet by 200 feet), and runway 9L/27R (4,439 feet by 200 feet). Both runway 18L/36R and runway 9R/27L are equipped with high intensity edge lights, precision approach path indicator lights, and RNAV GPS instrument approaches. Additionally, the runway 36R end is equipped with a 1,400-foot long medium intensity approach lighting system and ILS/DME instrument approach with localizer, while the runway end 9R features a 1,400-foot long medium intensity approach lighting system and VOR instrument approach. Runways 18R/36L and 9L/27R are not equipped with any lighting systems or instrument approaches. All four runways are paved with asphalt and concrete in good condition.

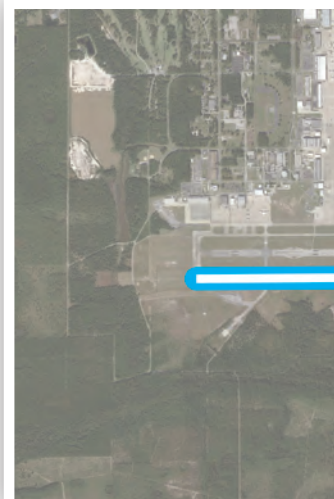
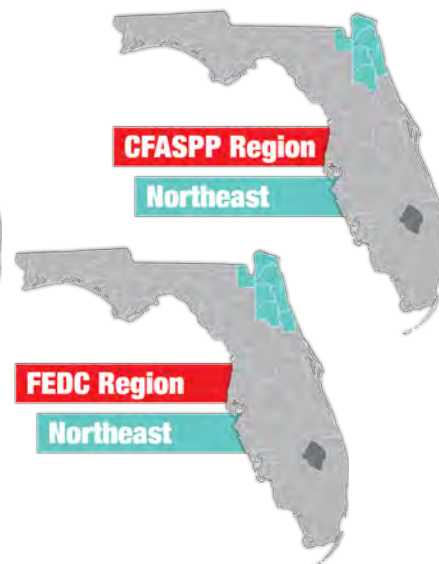
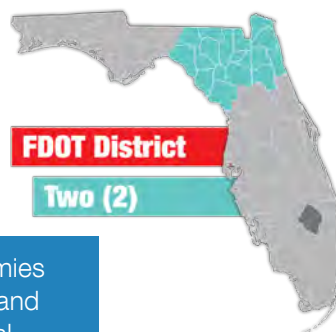
As a public general aviation airport, Cecil Airport can accommodate GA aircraft, wide-body commercial jets, military aircraft, and even spacecraft that have horizontal landing and takeoff capability. In 2010, Cecil Airport was officially designated as a spaceport by the FAA. This has opened Cecil Airport up to additional funding opportunities for the development of a commercial spaceport. General aviation services are provided by the airport's fixed base operator, Jacksonville Jetport. The airport also features two aircraft rescue and firefighting facilities as well as an air traffic control tower, which is attended from 7:00am to 11:00pm Monday through Friday and 7:00am to 9:00pm on Saturday and Sunday. In total, the airport has 39 buildings, 1 hangars with over one million square feet of space, 537,000 square yards of apron space, and 800,000 square feet of office space.

For more information, please visit VQQ's website at: www.cecilairport.com

Airport Classification

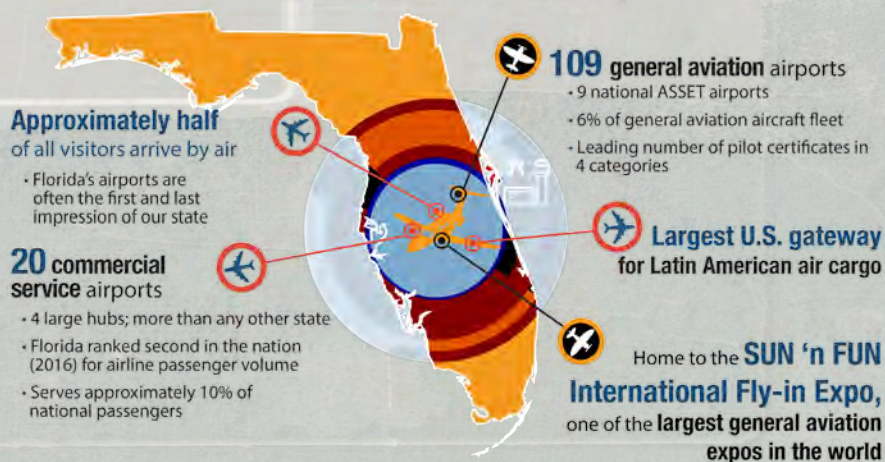


Regional airports support regional economies by connecting communities to statewide and interstate markets. There are 492 Regional Asset airports nationwide and 30 within Florida, including Cecil Airport. More information can be found in the Federal Aviation Administration's ASSET Studies at https://www.faa.gov/airports/planning_capacity/ga_study/.





Florida by the Numbers



Community Service

Cecil Airport plays a unique role as a general aviation airport. The three main aviation activities at the airport are flight training, military operations, and activity related to maintenance, repair, and overhaul of aircraft. Two airport tenants, Florida State College at Jacksonville (FSCJ) and LSI, Inc., account for the flight training activity. However, their programs are not limited to only pilot training. FSCJ also offers degree programs in all aspects of airport administration and operation, while LSI provides training and support programs for militaries, both foreign and domestic.

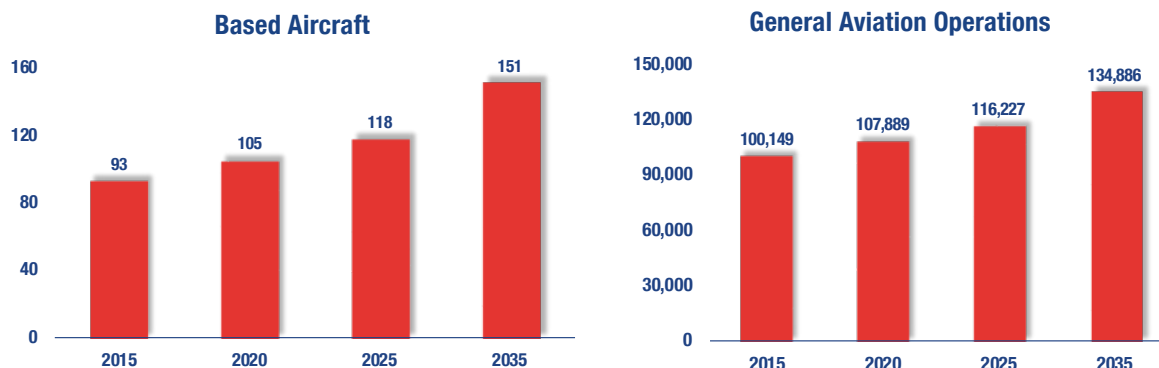
Cecil Airport is home to several military tenants. The U.S. Navy operates a Fleet Readiness Center at the airport. This facility, one of three in the country, is responsible for modification, repair, and overhaul of naval aircraft, engines, and avionics. The Florida Army National Guard's Army Aviation Support Facility maintains a fleet of helicopters at Cecil Airport. Finally, the U.S. Coast Guard's only armed aviation unit, the Helicopter Interdiction Tactical Squadron, is located at the airport. This unit is tasked with fighting seaborne drug trafficking.

Cecil Airport is also home to major maintenance, repair, and overhaul (MRO) operations. Boeing and Wood Group Pratt & Whitney have MRO facilities at Cecil to service their respective products, while Flightstar Aircraft Services provides MRO for various types of commercial aircraft.



Current and Forecast Demand

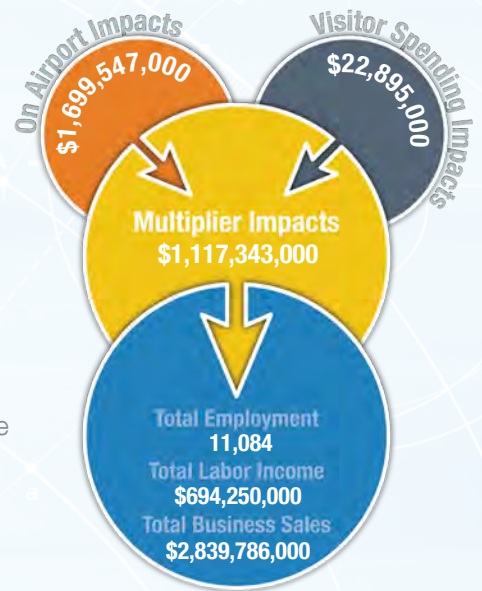
According to Florida Aviation System Plan data, in 2014 there were 93 aircraft based at Cecil Airport. During the same time period, there were 1,132 commercial operations and 91,167 GA operations, resulting in approximately 92,299 total annual operations. For the 12-month period ending on February 24, 2017, 52 percent of all operations were military, 31 percent were local general aviation, 16 percent were transient general aviation, and less than one percent each were commercial and air taxi operations. The current Airport Reference Code for Cecil Airport is D-IV.



Economic Impact

Cecil Airport is located in Duval County, approximately 20 miles west of Jacksonville. The airport has four total runways, with the longest runway measuring 12,503 feet. The airport can accommodate all general aviation aircraft, as well as large military and commercial jet aircraft. The airport and its facilities support a variety of general aviation and industrial activities.

The airport primarily supports military exercises and trainings, routinely hosting squadrons on training missions and detachments. Cecil Airport is recognized for its capability to support aircraft flight testing and is established as an emergency staging area to provide supplies and equipment during natural disasters. The airport is also an FAA-licensed horizontal launch commercial spaceport, providing key infrastructure for space-related businesses. The airport has established relationships with the medical community in Jacksonville; individuals travel into the airport specifically to attend the Mayo Clinic. Aircraft maintenance business and a fixed base operator (FBO) are among the tenants that serve the airport's users.



Other Airport Characteristics

Cecil Airport is located adjacent to the 11,000-acre Cecil Commerce Center, a commercial and industrial park where major companies like Amazon, GE, and FedEx maintain distribution, warehousing, and manufacturing facilities. The airport is also an important staging area during natural disasters and other emergencies. During Hurricane Irma in 2017, Cecil Airport hosted 72 aircraft involved in emergency response, while during Hurricane Maria the airport was a base for aircraft flying relief supplies to the devastated island of Puerto Rico.

Current and Future System Service Requirements/Recommendations

The airport is currently completing construction of several hangars and airport infrastructure. All the airfield lighting and signage has been renovated to incorporate new technology. The JAA has recently completed runway pavement rehabilitation projects to runways 9L/27R, 9R/27L, and 18L/36R and supporting taxiways. In addition, the JAA has constructed an extension of Taxiway Delta to the north to support the expected aviation expansion to the northwest of the airport. Future expansion efforts are being planned and designed. The next major location for development will be the east side area. The expected development will include new taxiways for airside access and landside roadways.

In addition to the JAA expansion efforts, the FLARNG unit at Cecil Airport has completed an expansion of facilities to support their new aviation (multi) mission requirements by expanding the flight apron and constructing a 35,000 square foot support storage hangar for the CH-47 helicopter. Additionally, Jacksonville Jetport has completed two hangars at 14,500 square feet and 27,500 square feet. The airport anticipates continued improvements to landside facilities such as the public and GA terminal areas and roadway and parking lot improvements. The airport has the facilities and NAVAIDS to support Very Light Jet (VLJ) aircraft, training, air cargo and MRO aviation activities.

In January of 2010 the FAA certified the airport as the nation's eighth commercial spaceport. Space operations at Cecil Airport will be commercial horizontal space flights. The JAA completed a spaceport master plan and business plan. The airport anticipates its first commercial launch will occur in late Spring of 2019.

Commercial Service Role



General Aviation Airport Role



FLORIDA DEPARTMENT OF TRANSPORTATION
AVIATION AND SPACEPORTS OFFICE
www.fdot.gov/aviation