

# Oak Tree Landing Airport



FLORIDA DEPARTMENT OF TRANSPORTATION  
AVIATION AND SPACEPORTS OFFICE

**Airport:** Oak Tree Landing Airport  
(6J8)

**City:** High Springs, Florida

**County:** Alachua County

**Owner:** Oak Tree Landing LLC

**Role:** General Aviation Airport

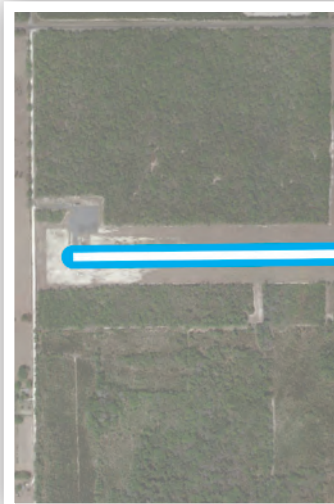


Located in Alachua County, approximately 25 miles northwest of Gainesville, Oak Tree Landing Airport is a privately-owned airport that serves the general aviation needs of the local community. With its single 4,630-foot turf runway, the airport can accommodate multi-engine aircraft.

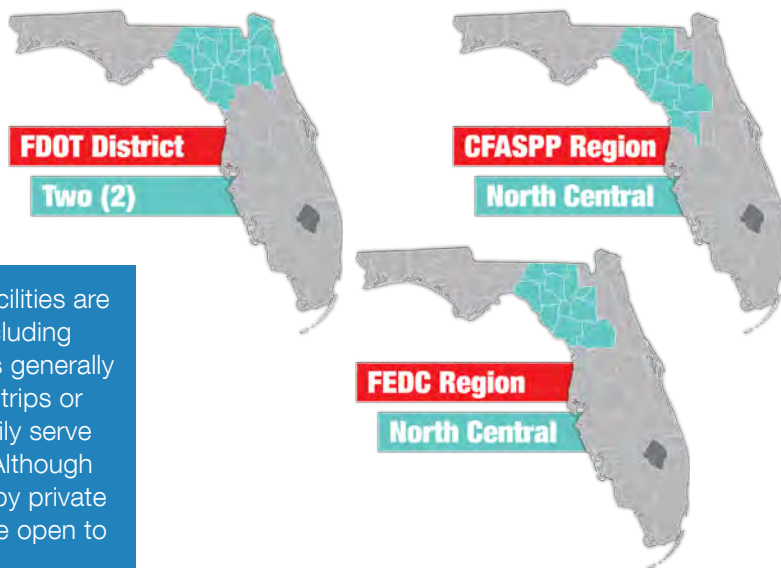


## Existing Facilities

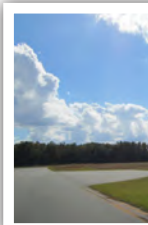
Facilities at Oak Tree Landing Airport are minimal. There is one runway at the airport, runway 09/27. Runway 09/27 is asphalt, in good condition, and measures 4,630 feet long by 75 feet wide.



## Airport Classification



Twenty-three privately-owned aviation facilities are open to the public throughout Florida including Oak Tree Landing Airport. These facilities generally comprise fly-in communities with grass strips or contain short paved runways that primarily serve the recreational general aviation public. Although these facilities are owned and operated by private individuals or companies, the facilities are open to the public for aviation use.





Oak Tree Landing Airport accommodates GA aircraft and GA activity for the local region. The main use of the airport is for business flights. Corporate and business users are responsible for about 70 percent of the annual operations. Recreational flying is also common at the airport and makes up about 30 percent of the annual operations. The airport also acts as a stop-over location for fuel by transient aircraft. For the 12-month period ending on April 25, 2017, approximately 50 percent of all operations were attributable to visiting aircraft while about 50 percent were due to local aircraft. Other activities that the airport supports includes military exercises, aerial law enforcement, and search and rescue.



## Current and Forecast Demand

Oak Tree Landing Airport plays an important role in serving a multitude of GA needs. As of 2014, there were 200 total operations and no based aircraft at the airport. The largest plane that uses the airport is a Cessna 310. Historic and forecast FDOT aviation activity information on file for Oak Tree Landing Airport follows:

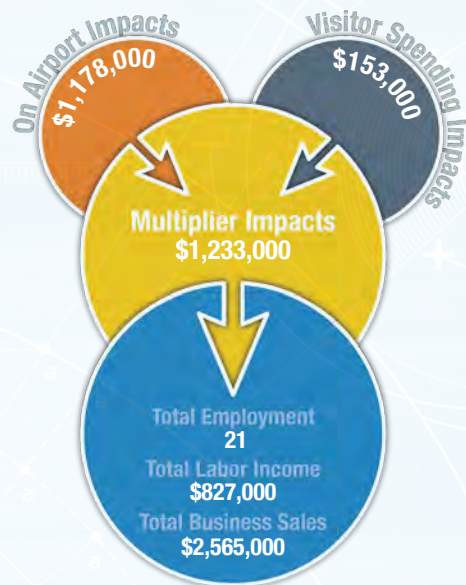




# Economic Impact

Oak Tree Landing Airport is in Alachua County, approximately 40 minutes northwest of Gainesville. The airport has one turf runway measuring 4,630 feet. The airport accommodates small general aviation aircraft and serves the general aviation needs of the local community.

The airport primarily supports military exercises and trainings. The airport also frequently hosts aerial law enforcement and search and rescue efforts. Recreational flyers also frequently use the airport and agricultural spraying, business activity, aerial photography, and emergency medical aviation occur at the airport as well. Taxis and rental cars are available at the airport to serve its users.



## Other Airport Characteristics

Oak Tree Landing Airport supports GA activity such as business flights, recreational flying, and military exercises. There are presently no businesses at the airport.

## Current and Future System Service Requirements/Recommendations

The airport is not currently undergoing any improvement projects. However, management indicates that future activities could include the development of a fly-in community, a new east/west runway, hangar storage units, airfield lighting, and a GPS approach. Activity at the airport is currently related primarily to recreational/sport use, with a limited amount of business and flight training operations. Management anticipates growth in these areas, with additional activity for charter/air taxi purposes. The analysis indicates that the existing runway length is inadequate to serve any significant expansion of services to the general aviation community. There is sufficient land area within airport property to support moderate expansion. However, significant improvement to airport facilities, including instrument and/or visual approach aids, would be necessary. Expansion to service business/recreational purposes would be feasible, however, in the mid to long term planning period.

### General Aviation Airport Role



Business/Recreational



Recreational/Sport



FLORIDA DEPARTMENT OF TRANSPORTATION  
AVIATION AND SPACEPORTS OFFICE  
[www.fdot.gov/aviation](http://www.fdot.gov/aviation)