

Mid Florida Air Service Airport



FLORIDA DEPARTMENT OF TRANSPORTATION
AVIATION AND SPACEPORTS OFFICE

Airport: Mid Florida Air Service Airport
(X55)

City: Eustis, Florida

County: Lake County

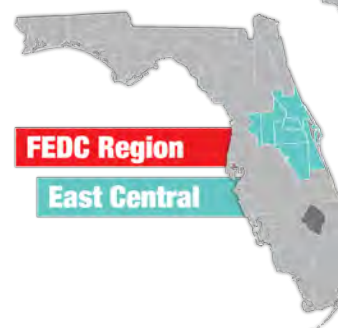
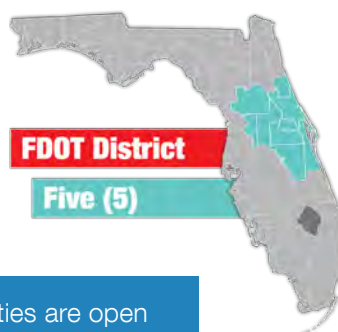
Owner: Mid Florida at Eustis, Inc

Role: General Aviation Airport

Existing Facilities

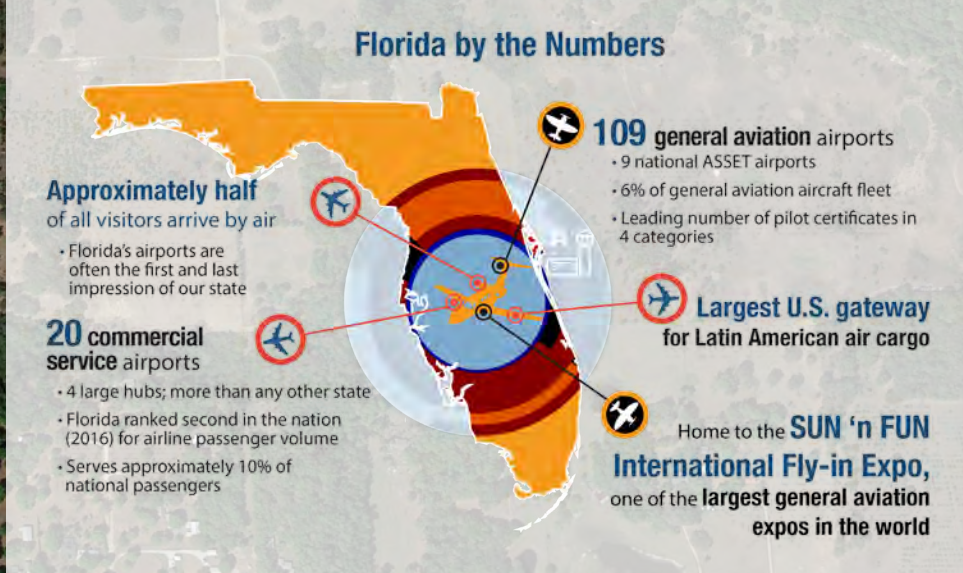
Mid Florida Air Service Airport is a privately-owned, public-use airport served by one turf runway, runway 18/36, in fair condition. The runway is 3,200 feet long by 80 feet wide. Facilities at the airport include a 3,000 square foot operations/terminal building, 24 grass tie-down aircraft parking spaces, and 49 covered aircraft parking spaces in the form of T-hangars and conventional hangars.

Airport Classification

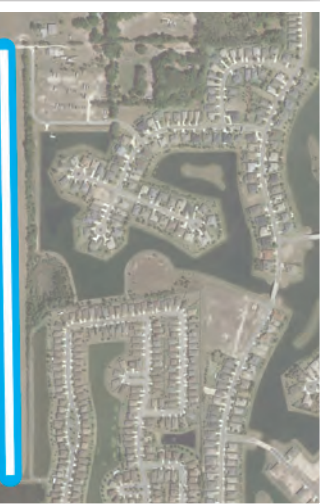


Twenty-three privately-owned aviation facilities are open to the public throughout Florida including Mid Florida Air Service Airport. These facilities generally comprise fly-in communities with grass strips or contain short paved runways that primarily serve the recreational general aviation public. Although these facilities are owned and operated by private individuals or companies, the facilities are open to the public for aviation use.





Community Service

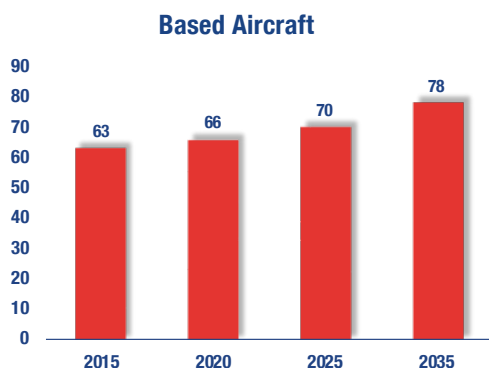


As a privately-owned, public use airport, Mid Florida Air Service Airport primarily serves the sport and recreational flying activity of its tenants. There is also a small amount of flight training that occurs at the airport. Business and corporate aviation operations are exceedingly rare at the airport, while commercial and military operations are almost non-existent.



Current and Forecast Demand

According to Florida Aviation System Plan data, in 2014 there were 63 aircraft based at Mid Florida Air Service Airport. During the same time period, there were 21,024 GA operations.



Current and Future **System Service Requirements/Recommendations**

The airport provides Flight Training (mostly by independent flight instructors, although there is a school specializing in tailwheel instruction), Business/Recreational (sightseeing), and Recreational/Sport (experimental) services. The airport plans to remain as is, with some increase in recreational operations and additional hangars. The analysis indicates that the airport is best suited for Recreational/Sport and Tourism services.

General Aviation Airport Role



Other **Airport Characteristics**

Mid Florida Air Service Airport opened in 1976 when the Griffen Family Corporation established a turf runway and a few hangars on 34 acres of land. In 1982, the airport was acquired by new ownership which sought to make much needed improvements to the property. Today, the 167- acre privately- owned public-use facility has 32 T-hangars, 2 conventional hangars, fuel facilities, and a building that serves as the FBO and GA terminal.



FLORIDA DEPARTMENT OF TRANSPORTATION
AVIATION AND SPACEPORTS OFFICE
www.fdot.gov/aviation