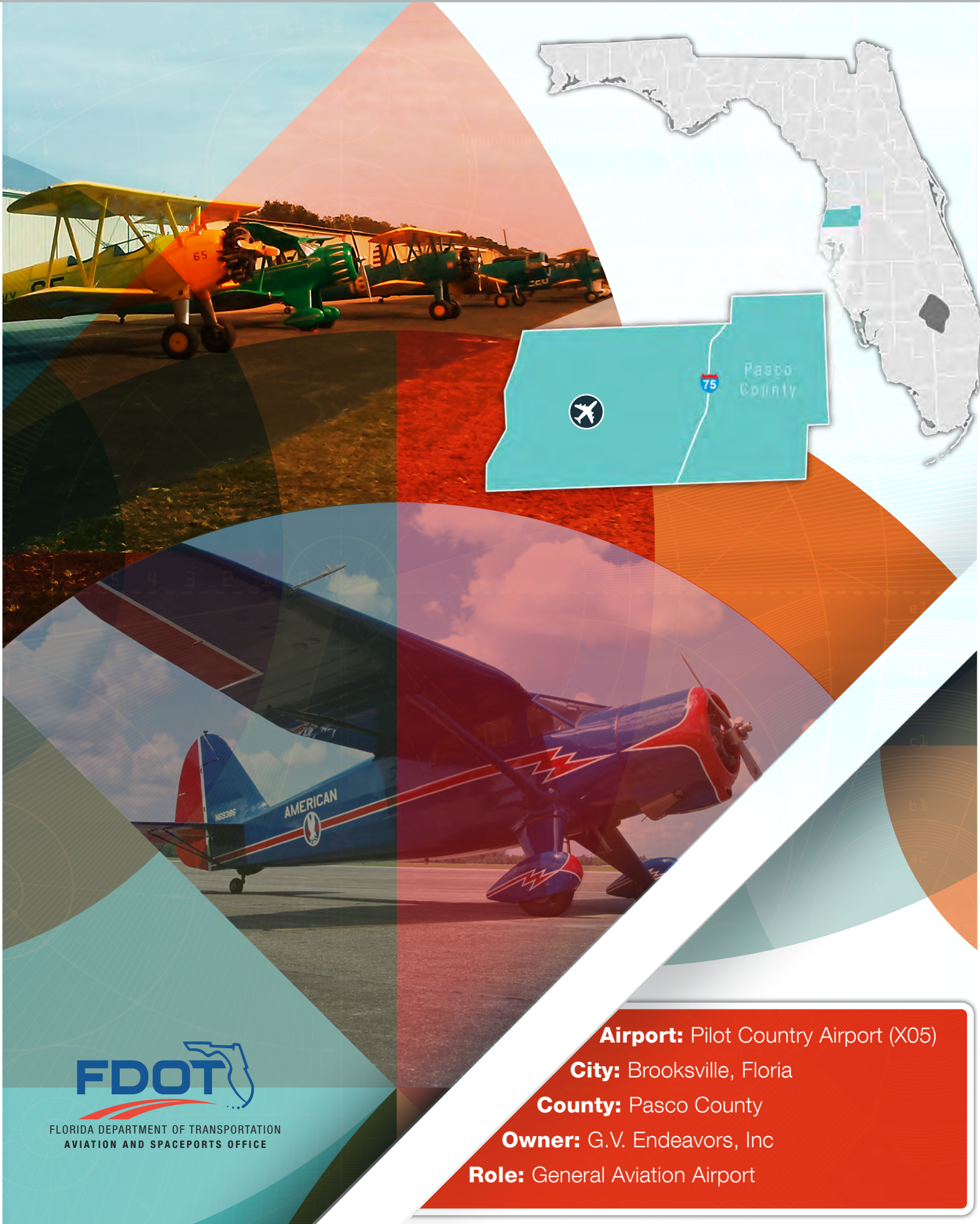


Pilot Country Airport



FLORIDA DEPARTMENT OF TRANSPORTATION
AVIATION AND SPACEPORTS OFFICE

Airport: Pilot Country Airport (X05)

City: Brooksville, Florida

County: Pasco County

Owner: G.V. Endeavors, Inc

Role: General Aviation Airport

Located in Pasco County, approximately 13 miles south of the City of Brooksville, Pilot Country Airport serves a variety of general aviation activities. Pilot Country Airport offers a single asphalt runway measuring 3,700 feet in length with a full-length parallel taxiway. The airport can accommodate small single-engine general aviation aircraft. The 27-acre airport is part of a residential housing area originally designed for lots. Current residential lots at the airport have access to taxiways directly from the home sites, making Pilot Country Airport a true fly-in community.

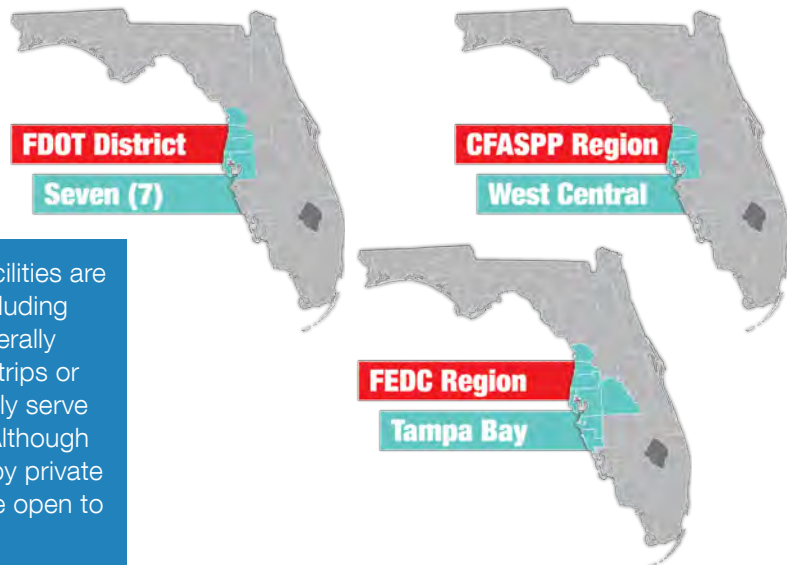


Existing Facilities

Pilot Country Airport features a single runway, designated 18/36, which measures 3,700 feet long by 75 feet wide. This runway is paved with asphalt in fair condition and is equipped with low intensity edge lights and basic markings. At the south end of the runway are most of the airport's facilities, which include a small administration building and fuel farm, where self-service 100 LL Avgas is available 24/7. The airport's apron area provides 30 tie-down spaces, while covered aircraft parking is accommodated by the airport's two shade hangar complexes.



Airport Classification



Twenty-three privately-owned aviation facilities are open to the public throughout Florida including Pilot Country Airport. These facilities generally comprise fly-in communities with grass strips or contain short paved runways that primarily serve the recreational general aviation public. Although these facilities are owned and operated by private individuals or companies, the facilities are open to the public for aviation use.





Community Service

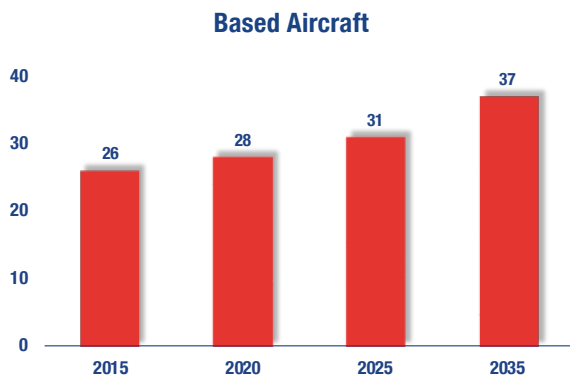


As a privately-owned, public-use airport, Pilot Country Airport focuses on supporting recreational and sport aviation. The airport is part of a fly-in community, with homes along either side of the runway whose owners are the primary users of the airport. As a part of this community, the airport frequently hosts community events for residents. While there are no flight training programs based at the airport, Pilot Country Airport does accommodate flight training operations originating from other nearby airports.



Current and Forecast Demand

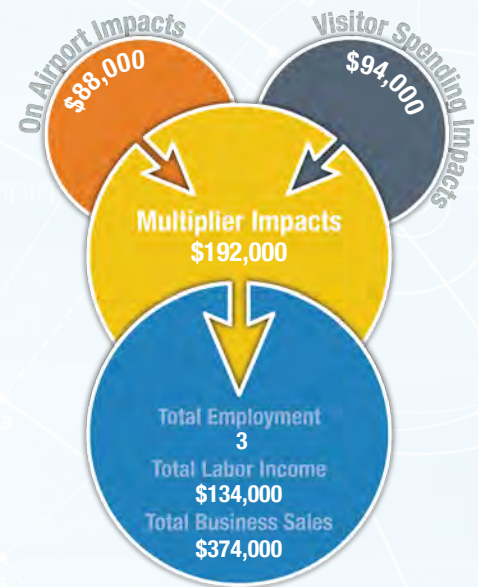
According to Florida Aviation System Plan data, in 2014 there were 27 aircraft based at Pilot Country Airport. During the same time period, there were approximately 10,176 general aviation operations. For the 12-month period ending on December 13, 2016, 70 percent of all operations were local general aviation, 30 percent were transient general aviation, and less than one percent were military operations.



Economic Impact

Pilot Country Airport is located in Pasco County, approximately 26 miles north of Tampa. The airport has one asphalt runway measuring 3,700 feet. The airport accommodates small general aviation aircraft and serves a variety of general aviation activities.

The airport primarily supports recreational flying, as it is in a fly-in community. Nonetheless, transient users also use the airport for business and personal travel, and the airport supports flight trainings and military trainings as well. The airport also supports crop spraying in the local region. The airport is engaged in the community and offers flights to Experimental Aircraft Association Young Eagles interested in aviation. A fixed base operator (FBO) is available and provides fuel and maintenance services for its users.



Other Airport Characteristics

Although it has no based military aircraft, Pilot Country Airport does accommodate the occasional military operation. These operations often originate from the Brooksville National Guard, who practice night time landings at the airport.

Current and Future System Service Requirements/Recommendations

The airport provides Recreational/Sport (experimental), Corporate, and Business/Recreational (charter, medical flights, aerial photography) services. The airport plans to establish a flight school, as well as increasing recreational, and charter operations. The analysis indicates that the airport is best suited for providing Recreational/Sport, Tourism (CA), and Flight Training. The airport is not particularly well suited for providing Corporate or Business/Recreational services because of the lack of any approach aids and the short runway (3,700 feet). Because of the airport's status as a residential airpark, this facility should be considered only for Recreational/Sport services in the future.

Based on the infrastructure planning analysis for Pilot Country Airport, the following depicts the airport's current levels of service as well as the types and levels of service that the airport will likely be required to accommodate by the year 2030:

General Aviation Airport Role



Recreational/Sport



FLORIDA DEPARTMENT OF TRANSPORTATION
AVIATION AND SPACEPORTS OFFICE
www.fdot.gov/aviation