

Flying Ten Airport



FLORIDA DEPARTMENT OF TRANSPORTATION
AVIATION AND SPACEPORTS OFFICE

Airport: Flying Ten Airport (0J8)

City: Archer, Florida

County: Alachua County

Owner: Flying Ten, Inc

Role: General Aviation Airport

Flying Ten Airport is located in southwest Alachua County, approximately 15 miles southwest of Gainesville. With its single 3,200-foot long turf runway, the airport can accommodate small general aviation aircraft.

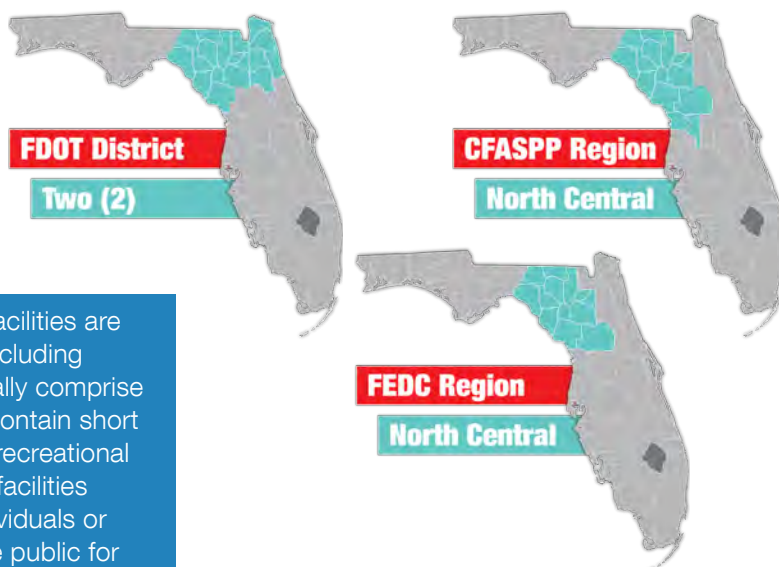


Existing Facilities

The Flying Ten Airport is served by one turf runway, runway 18/36. This runway measures 3,200 feet by 170 feet, is equipped with runway edge lights, and is marked with white cones and white metal markers. Aircraft parking is available near the south end of the field and includes 18 tie-downs and 3 privately owned bulk hangars. There are also approximately 10 auto parking spaces available for airport users. Residential properties surround the airport on three sides which limits its potential growth.



Airport Classification



Twenty-three privately-owned aviation facilities are open to the public throughout Florida including Flying Ten Airport. These facilities generally comprise fly-in communities with grass strips or contain short paved runways that primarily serve the recreational general aviation public. Although these facilities are owned and operated by private individuals or companies, the facilities are open to the public for aviation use.





Community Service

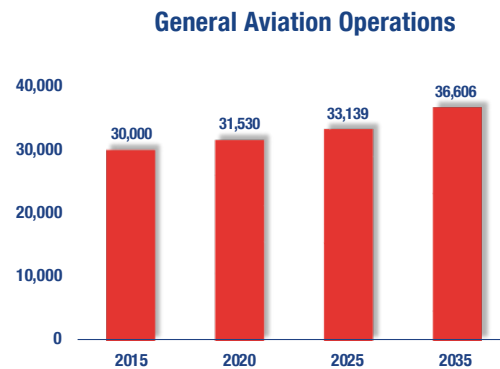
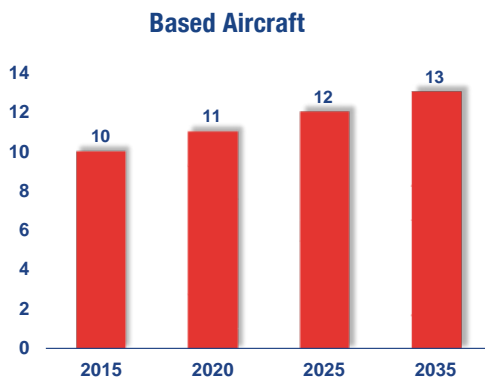


The Flying Ten Airport accommodates GA aircraft and serves the GA needs of the local community. The main activity that occurs at the airport is flight training. This includes military exercises and career training. Roughly 70 percent of the airport's annual operations are related to flight training, yet it does not currently have aviation training programs that connect with local colleges, universities, or technical schools. Business activity due to corporate and business users also occurs at the airport. Business activity makes up about 5 percent of the airport's annual operations. A The airport is mainly used by local pilots but does attract a small amount of transient aircraft. For the 12-month period ending on April 25, 2017, approximately 67 percent of all operations were attributable to local aviation while 33 percent were due to visiting aircraft. Other general aviation activities that the airport supports includes recreational activity, emergency medical aviation, and law enforcement.



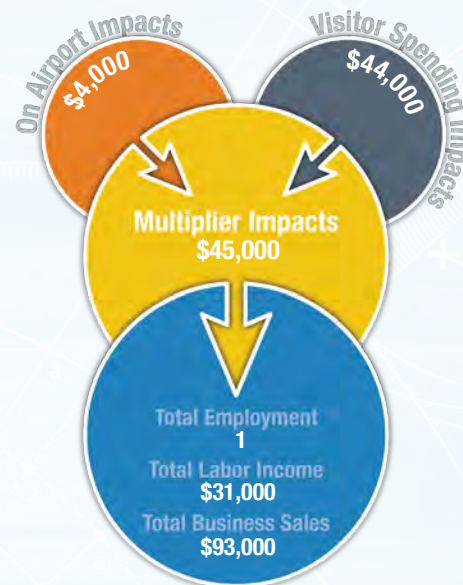
Current and Forecast Demand

Flying Ten Airport serves the general aviation needs of the local community. In 2014, there were 11 based aircraft and 30,000 total operations. The majority of the aircraft based at the airport are single-engine airplanes with the remaining aircraft being ultralights. Of the total based aircraft, approximately 60 percent are stored on tiedowns and 40 percent are in hangars. The airport presently reports a waiting list for T-hangars. Light twin-engine aircraft are the largest aircraft that use the airport on a regular basis and the Airport Reference Code is currently unknown. Historic and forecast FDOT aviation activity information on file for Flying Ten Airport is as follows:



Economic Impact

Flying Ten Airport is in Alachua County, approximately 30 minutes west of Gainesville. The airport has one turf runway measuring 3,200 feet. The airport accommodates small general aviation aircraft and primarily supports recreational flying and business activity. The airport is also used for flight trainings, military exercises, career training, emergency medical aviation, law enforcement, and ballooning. Promotional activities are also occasionally held at the airport.



Other Airport Characteristics

Flying Ten Airport does not have any based military aircraft. In 2017, the airport did not experience any operations from transient military aircraft, but it does occasionally accommodate a low number of transient military operations. These military operations are performed primarily by visiting National Guard and Air Guard helicopters. Promotional activities also occasionally occur at the airport.

Current and Future System Service Requirements/Recommendations

The airport currently serves primarily recreational/sport flying activities. Management indicates that the airport is an alternative to Gainesville Regional on University of Florida football game days. While there is a small amount of transient military activity, nearly 60 percent of operations are related to flight training. While Management does not anticipate any improvement projects in the near future, increased flight training and recreational/sport use is expected, with the potential for serving light twin-engine aircraft in the future. The airport does not anticipate significant change over the planning period. The analysis indicates that the extent of the existing airport property is not adequate for significant expansion, and the existing runway length (2,617 feet) is not sufficient to support use by larger aircraft. Additionally, the lack of any instrument or visual approach aids will limit the extent to which larger and more modern aircraft will use the airport.

General Aviation Airport Role



Tourism



Recreational/Sport



Business/Recreational



FLORIDA DEPARTMENT OF TRANSPORTATION
AVIATION AND SPACEPORTS OFFICE
www.fdot.gov/aviation