

St George Island Airport



FLORIDA DEPARTMENT OF TRANSPORTATION
AVIATION AND SPACEPORTS OFFICE

Airport: St. George Island Airport
(F47)

City: Apalachicola, Florida

County: Franklin County

Owner: St. George Plantation Owners
Association

Role: General Aviation Airport

Located in Franklin County, approximately eight miles southeast of Apalachicola, St. George Island Airport primarily serves recreational general aviation activity. With its single 3,339-foot long runway, the airport can accommodate small multi-engine general aviation aircraft.



Existing Facilities

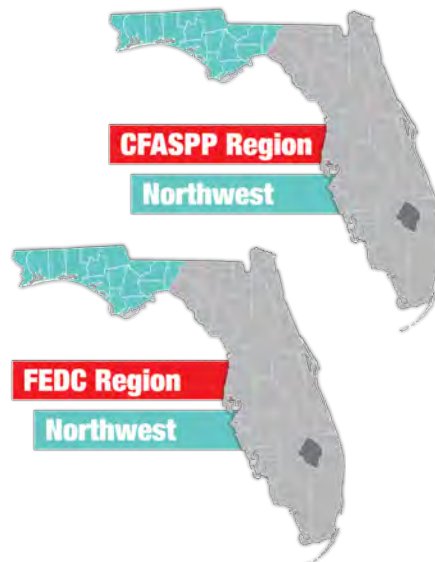
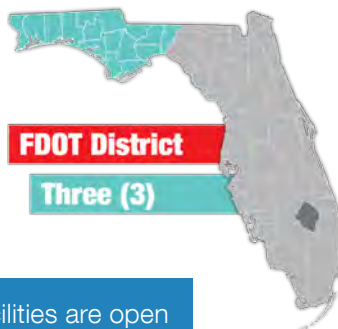
St. George Island Airport features a single asphalt runway, runway 14/32. 14/32 measures 3,339 feet long by 65 feet wide, with a displaced threshold at the runway 32 end and no parallel taxiway. Other facilities at St. George Island Airport are minimal. The airport does not have a GA terminal building or automobile parking spaces. There are currently five tiedown spaces available at the airport for visiting aircraft.

For more information, please visit F47's website at:

<http://www.stgeorgeplantation.com/Page/37437~697322/Plantation-Airport>



Airport Classification



Twenty-three privately-owned aviation facilities are open to the public throughout Florida including St. George Island Airport. These facilities generally comprise fly-in communities with grass strips or contain short paved runways that primarily serve the recreational general aviation public. Although these facilities are owned and operated by private individuals or companies, the facilities are open to the public for aviation use.





Community Service

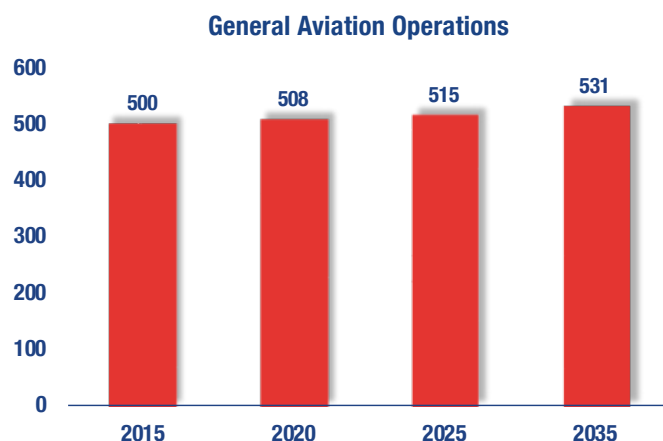


St. George Island Airport accommodates GA aircraft and GA activities for the local region. The airport focuses on recreational flying and charter flights. All of the airport's operations are due to visiting aircraft. For the 12-month period ending on April 27, 2017, 100 percent of all operations were attributable to visiting aviation. Pristine, secluded beaches attract visitors to the island, and most airport users are traveling to and from homes or vacation rentals on the island. General aviation operations related to corporate and business users also occur on a limited basis at the airport. The airport estimates that one percent of its annual general aviation operations are business-related



Current and Forecast Demand

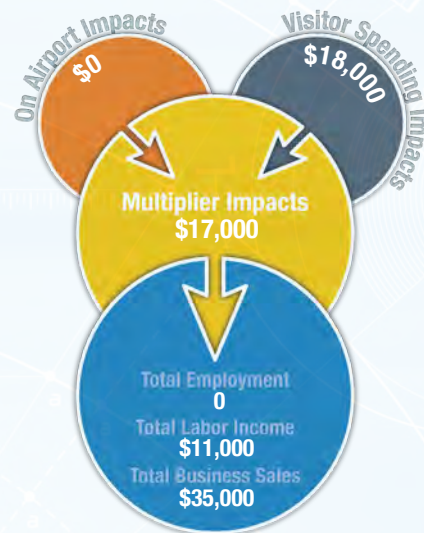
St. George Island Airport plays an important role in serving the GA needs of the local community. As of 2014, there were no based aircraft and 500 total annual operations at the airport. The largest plane that uses the airport on a regular basis is a light twin-engine aircraft and the current Airport Reference Code is B-I which includes aircraft such as the Beechcraft King Air, Cessna Citation Mustang, and Piper Cheyenne. Historic and forecast FDOT aviation activity information on file for St. George Island Airport follows:



Economic Impact

St. George Island Airport is in Franklin County along Florida's Gulf Coast, about 79 miles southwest of Tallahassee. The airport has one paved runway, measuring 3,339 feet.

The airport primarily serves the general aviation needs of transient aircraft and supports recreational flying, charter flights, and military exercises. Pristine beaches attract visitors to the island, and most airport users are traveling to and from homes or vacation rentals. General aviation visitors contribute to the local economy by visiting local restaurants and utilizing lodging options on St. George Island.



Other Airport Characteristics

The main role of St. George Island Airport is supporting visiting aircraft coming to the island. The airport is vital in supporting the tourism industry in the region. There are no based military aircraft at the airport and none of the operations are due to transient military aircraft.

Current and Future System Service Requirements/Recommendations

Future development of the airport is limited by surrounding roads and residential areas. As a result, the airport is not well positioned to take on additional future services.

General Aviation Airport Role



Recreational/Sport



FLORIDA DEPARTMENT OF TRANSPORTATION
AVIATION AND SPACEPORTS OFFICE
www.fdot.gov/aviation