

Wakulla County Airport



FLORIDA DEPARTMENT OF TRANSPORTATION
AVIATION AND SPACEPORTS OFFICE

Airport: Wakulla County Airport
(2J0)

City: Panacea, Florida

County: Wakulla County

Owner: Wakulla County

Role: General Aviation Airport

Located in Wakulla County, approximately three miles south of Panacea, Wakulla County Airport serves the general aviation needs of the local community. With its single 2,590-foot turf runway, the airport can accommodate small general aviation aircraft.



Existing Facilities

Wakulla County Airport's property is 13 acres. The airport's facilities are minimal and do not include taxiways, auto parking spaces, or ramp space. The airport has one runway, runway 18/36. Runway 18/36 is turf and measures 2,590 feet by 70 feet. The airport also includes 10 grass tie-downs and 20 private T-hangars available for GA aircraft.

For more information, please visit 2JO's website at:

http://www.mywakulla.com/departments/county_administrator/departments/wakulla_county_airport/index.php

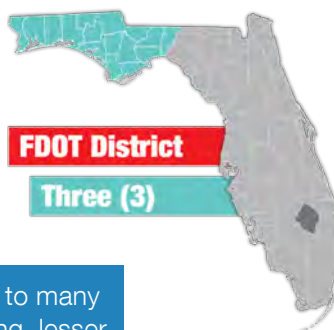


Airport Classification



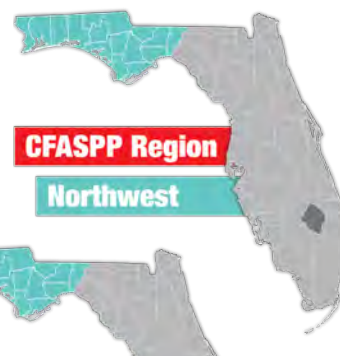
**NON
NPIAS
GENERAL
AVIATION AIRPORT**

General aviation airports provide access to many benefits of aviation, including flight training, lesser amounts of air cargo, tourism, business and corporate flights, and other aviation activities. Of Florida's 129 public use airports, 29 are not included in the Federal Aviation Administration's National Plan of Integrated Airport Systems, including Wakulla County Airport.



FDOT District

Three (3)



CFASPP Region

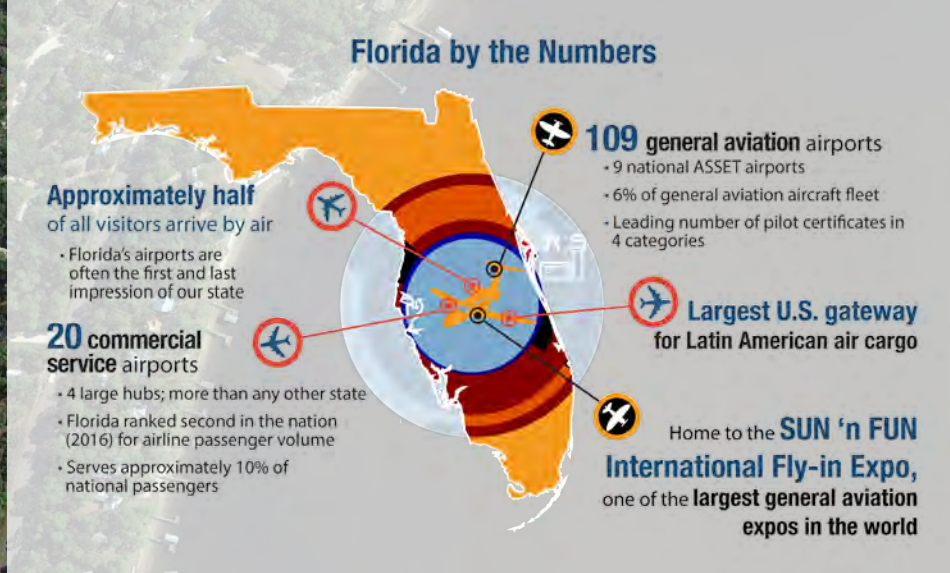
Northwest



FEDC Region

Northwest





Community Service

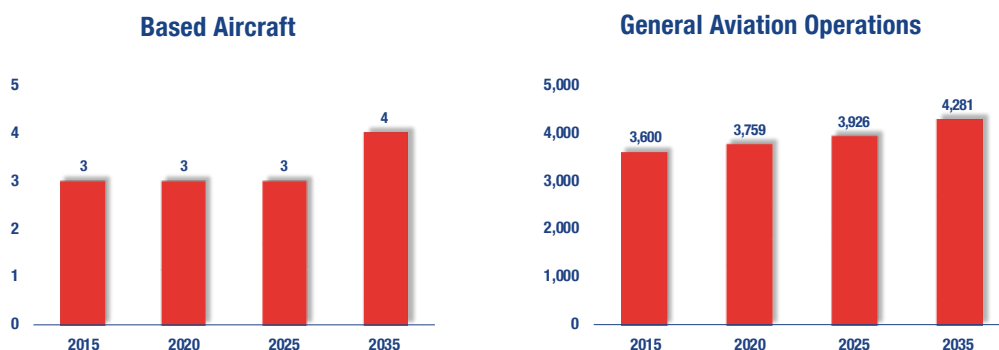


Wakulla County Airport accommodates GA aircraft and activities for the region. The main activities that occur at the airport include flight training and recreational flying. The airport is situated adjacent to a fly-in community and mainly serves local users. For the 12-month period ending on April 27, 2017, approximately 84 percent of all operations were attributable to local aircraft while about 13 percent were due to transient GA aircraft. The remaining operations were transient military operations. Recreational flying is the primary activity at the airport with local seafood attracting recreational users and visitors. Flight training is also popular and makes up about 10 percent of the airport's annual operations. Another activity that occasionally occurs at the airport is business activity which also makes up about 10 percent of the annual operations. There are currently no businesses located at the airport or corporate based aircraft located on the airfield. The airport also engages with the community by hosting the annual Wakulla Wings and Wheels Fly-In, where residents can go on plane rides, view military aircraft, and enjoy local vendors.



Current and Forecast Demand

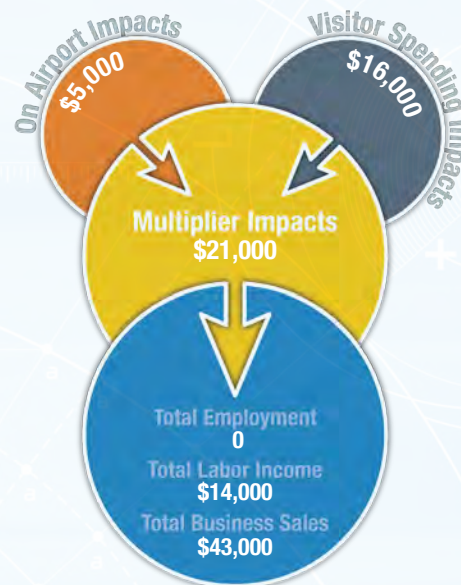
Wakulla County Airport plays an important role in serving most facets of GA. As of 2015, there were 3 based aircraft and 3,600 total annual operations. Of the based aircraft, the majority are single-engine airplanes with the remaining being an ultralight. Most of the based aircraft are stored in hangars with the others using tie-downs. The largest plane that uses the airport is a Cessna 310 and the current Airport Reference Code for the airport is A-I. Historic and forecast FDOT aviation activity information on file for the Wakulla County Airport follows:



Economic Impact

Wakulla County Airport is located near the town of Panacea, approximately 30 miles south of Tallahassee. The airport has one turf runway, measuring 2,590 feet. The airport supports the adjacent Tarpine fly-in community and general aviation aircraft. The airport has been in operation for 54 years, and presently supports recreational flying, flight training, military training, and visiting aircraft. Emergency medical aviation and local law enforcement also occasionally use the airport.

Local seafood restaurants and fishing attract recreational users and visitors to the area. The airport also hosts the annual Wakulla Wings and Wheels Fly-in, when local residents may take a plane ride, view military aircraft, and explore the booths of local vendors.



Other Airport Characteristics

Wakulla County Airport serves the GA needs of the local community such as recreational flying, flight training, and business activity. There are no military aircraft based at the airport but approximately 3 percent of the total annual operations are due to transient military operations.

Current and Future System Service Requirements/Recommendations

The airport has recently installed an irrigation system and has leveled and re-sodded the runway surface. An effort to remove old hangars and remove trees is underway that will effectively increase the existing runway length. Additionally, the airport is currently in the process of developing 20 hangar storage spaces with taxi lane access to the runway. The airport has also solicited FDOT for assistance in acquiring property immediately west of the existing airport property for the purpose of taxiway, parking, and runway expansion. The airport also recognizes that fuel facilities, auto parking, restrooms, and hangars are necessary to accommodate demand. The analysis indicates that the existing airport property (13 acres) will severely limit the extent to which the airport can expand to support local general aviation demand. For this reason, the airport will likely continue to serve recreational/sport activities, along with some flight training use during the planning period.

General Aviation Airport Role



Flight Training



Recreational/Sport



FLORIDA DEPARTMENT OF TRANSPORTATION
AVIATION AND SPACEPORTS OFFICE
www.fdot.gov/aviation