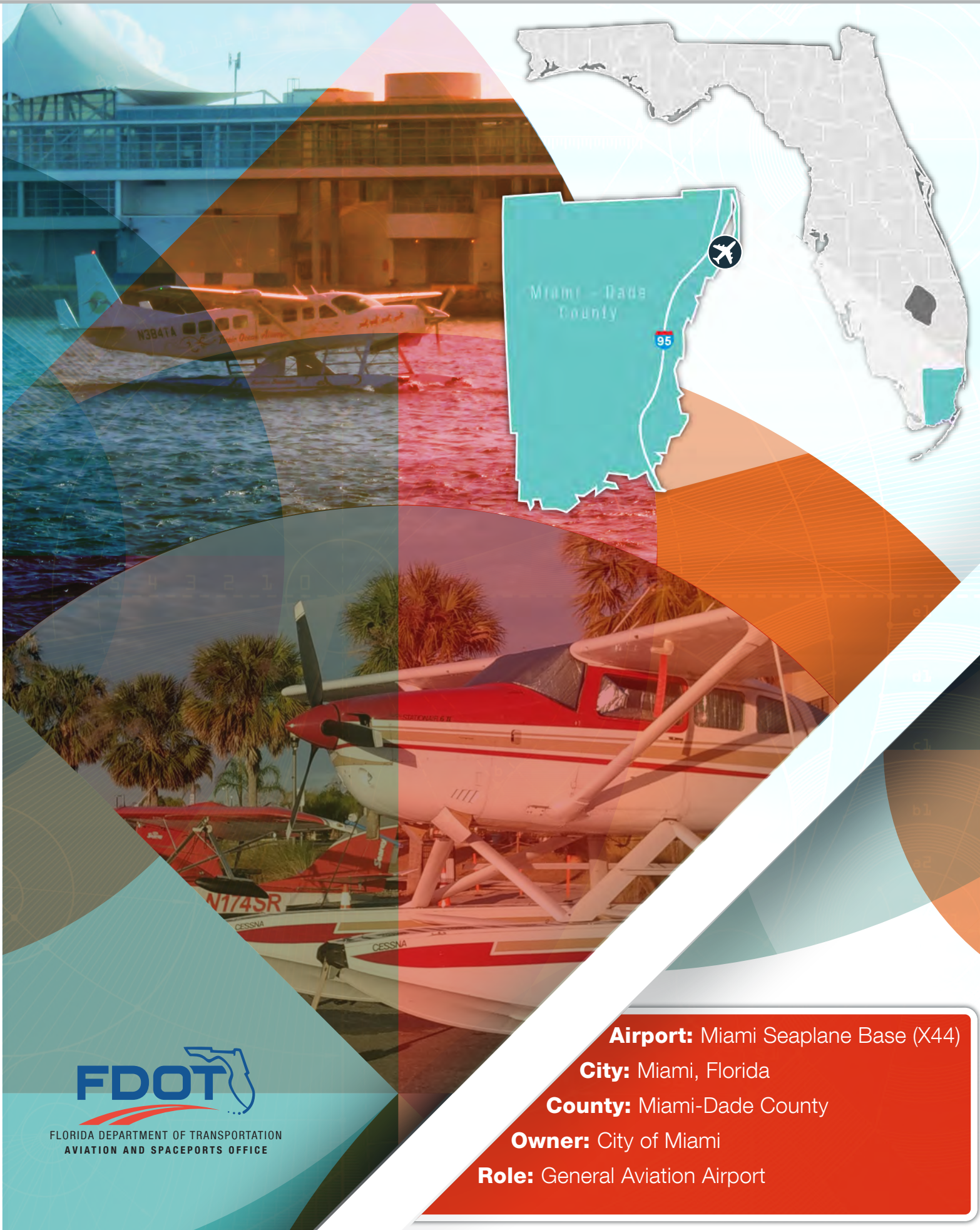


# Miami Seaplane Base



FLORIDA DEPARTMENT OF TRANSPORTATION  
AVIATION AND SPACEPORTS OFFICE

**Airport:** Miami Seaplane Base (X44)

**City:** Miami, Florida

**County:** Miami-Dade County

**Owner:** City of Miami

**Role:** General Aviation Airport



Located near the southern tip of the Miami Beach peninsula, Miami Seaplane Base serves as a fixed base operator (FBO) for seaplanes and seaplane tours. In addition to a small landside terminal, facilities located at the seaplane base include a seaplane ramp, apron, and fueling area. The water runway is 14,000 feet in length. The landing area has a northwest/southeast orientation in the Port of Miami's deep-water channel.



## Existing Facilities

Facilities at the Miami Seaplane Base include runway 12W/30W and Helipad H1. Runway 12W/30W is a water runway located in the Port of Miami's deep-water channel. It measures 14,000 feet by 200 feet and has restricted activity. Therefore, all seaplane operations must be coordinated with the U.S. Coast Guard prior to occurring. Helipad H1 is concrete, in excellent condition, and measures 50 feet by 50 feet. Other facilities at the base include a seaplane ramp, apron, and fueling area. There is also a terminal and a small passenger holding area at the base to accommodate its users. There is no permanent aircraft storage at the base but there are temporary parking spaces for seaplanes.

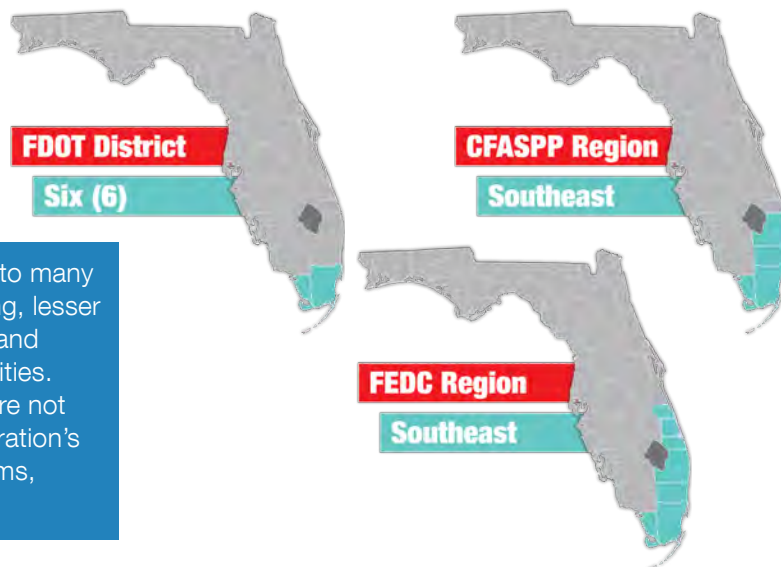
For more information, please visit X44's website at:  
<https://www.miamiseaplanebase.com/>

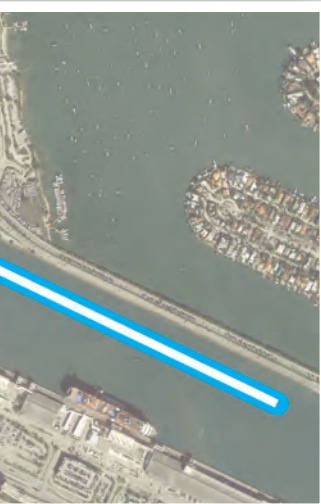


## Airport Classification



General aviation airports provide access to many benefits of aviation, including flight training, lesser amounts of air cargo, tourism, business and corporate flights, and other aviation activities. Of Florida's 129 public use airports, 29 are not included in the Federal Aviation Administration's National Plan of Integrated Airport Systems, including Miami Seaplane Base.





Miami Seaplane Base serves as a fixed base operator and accommodates recreational activity and seaplane tours. The base acts as a hub for exploring Miami and South Florida due to its close proximity to popular beaches, resorts, and fishing lodges. For the 12-month period ending on May 24, 2017, the base averaged 37 operations a week. The base is often utilized for seaplane aerial tours of the Miami skyline, sunsets, South Beach, Biscayne Bay, and other popular landmarks. The base also services several seaplane operators on a regular basis, including Shoreline Aviation. Shoreline Aviation offers seaplane operations to the Florida Keys, Captiva Island, Sanibel Island, the Bahamas, and other popular destinations. The facilities at the base are able to accommodate large scale events. The base is ideally located for hosting various promotional activities such as music video shoots, commercials, events, and private parties.



## Current and Forecast Demand

Miami Seaplane Base serves as a fixed base operator for seaplanes and seaplane tours. As of 2014, there were zero based aircraft and 1,950 total operations. The largest aircraft that uses the facility is the Grumman Albatross and the current Airport Reference Code is A-III. Historic and forecast FDOT aviation activity information on file for the Miami Seaplane Base is as follows:

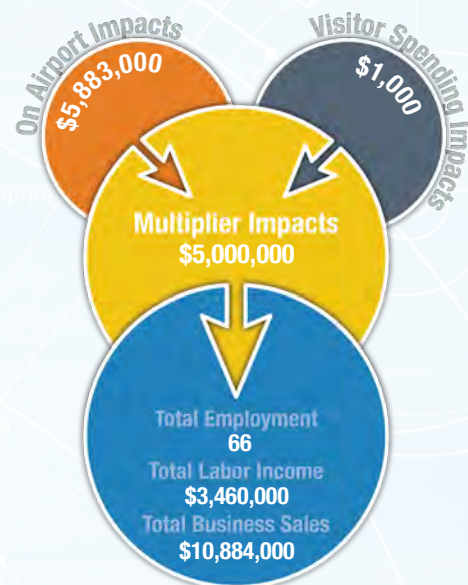




# Economic Impact

Miami Seaplane Base is located in Miami-Dade County on Watson Island, just east of Miami's central business district. The base serves as a fixed base operator (FBO) for seaplanes, with a water runway that measures 14,000 feet long.

The base is a public-use airport that supports seaplanes and seaplane tours and is currently undergoing expansion efforts to better serve the local region. The airport primarily supports recreational flying and business activity. The facility provides easy access to the nearby Bahamas Islands and to many local attractions such as popular beaches, resorts, and fishing lodges. The base also accommodates local emergency trainings and response practices. The base is ideally located to host various promotional activities such as music video shoots, commercials, events, and private parties. The base also provides an internship program with the Miami-Dade College Aviation Program.



## Other Airport Characteristics

The main activities at Miami Seaplane Base include recreational flying and seaplane tours. The base supports the local region by providing an internship program with the Miami-Dade College Aviation Program. The base also accommodates local response and emergency trainings.

## Current and Future System Service Requirements/Recommendations

Given the nature of the water runway surface, few other services will be possible from the Seaplane Base facility. The analysis indicates that the Airport is best suited for providing Recreational/Sport and Tourism (CA) services. The facility did not receive a high quotient in the Tourism (CS) service category because of the small acreage of the Airport. However, seaplane bases are rather unique in their operations, and, because this is a publicly owned facility, it can be expected that the Airport will continue to provide Tourism (CS) service in the future. Based on the infrastructure planning analysis, the following depicts the Airport's current levels of service as well as the types and levels of service that the Airport will likely be required to accommodate by the year 2030:

### General Aviation Airport Role



Corporate



Tourism



FLORIDA DEPARTMENT OF TRANSPORTATION  
AVIATION AND SPACEPORTS OFFICE  
[www.fdot.gov/aviation](http://www.fdot.gov/aviation)