

# La Belle Municipal Airport



FLORIDA DEPARTMENT OF TRANSPORTATION  
AVIATION AND SPACEPORTS OFFICE

**Airport:** LaBelle Municipal Airport  
(X14)

**City:** LaBelle, Florida

**County:** Hendry County

**Owner:** Hendry County

**Role:** General Aviation Airport



Located in Hendry County, approximately 30 miles northeast of Fort Myers, LaBelle Municipal serves a variety of general aviation activities. With its single 5,254-foot runway, the airport can accommodate small business jet aircraft. The airport's terminal is ideal for serving local users as well as those visiting the area.



## Existing Facilities

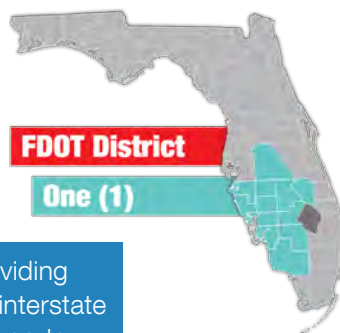
LaBelle Municipal Airport is served by runway 14/32, an asphalt runway that measures 5,254 feet long by 75 feet wide. It utilizes the RNAV GPS instrument approach and is equipped with medium intensity edge lights and precision approach path indicators. The runway is also served by a full length paved parallel taxiway that is 25 feet wide and equipped with low intensity taxiway lights. Other facilities at the airport include a terminal that serves local and visiting users. The airport also has a 900 square-foot administration building that includes 25 paved auto parking spaces. There are currently 25 paved and ten grass tie-down spaces for aircraft at the airport.



## Airport Classification



Local airports serve communities by providing access to primarily intrastate and some interstate markets. There are 1,278 Local Asset airports nationwide and 29 within Florida, including LaBelle Municipal Airport. More information can be found in the Federal Aviation Administration's ASSET Studies at [https://www.faa.gov/airports/planning\\_capacity/ga\\_study/](https://www.faa.gov/airports/planning_capacity/ga_study/).





## Community Service

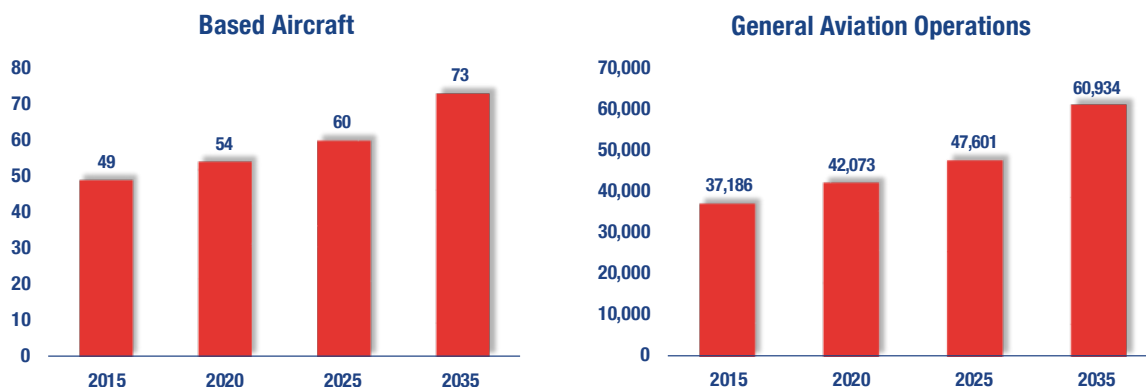


LaBelle Municipal Airport currently serves as a GA airport. The main activity that occurs at the airport is recreational flying. The airport also receives activity from local businesses and flight training. Flight schools are not officially located at the airport, but there are off-site flight schools and pilots who offer freelance flight trainings. It is estimated that roughly 25 percent of the airport's annual operations are related to flight training. General aviation operations by corporate and business users are also common at the airport. Roughly ten percent of the airport's annual operations are business related and about ten percent of the airport's based aircraft are owned by local agriculture and fishing businesses. The airport also accommodates transient aircraft visiting the area or stopping over for low-priced fuel. For the 12-month period ending on October 25, 2016, approximately 68 percent of all operations were attributable to local aviation while 32 percent were due to transient aviation. Air taxi operations also occur at the airport and make up about one percent of its annual operations.



## Current and Forecast Demand

LaBelle Municipal Airport plays an important role in serving different facets of GA. As of 2014, there were 49 based aircraft and 22,000 total operations at the airport. Of the based aircraft, the majority are single-engine airplanes with the remaining being multi-engine airplanes, helicopters, gliders, and ultralights. Approximately 17 percent of the based aircraft are stored on paved tie-downs while 83 percent are stored in T-hangars or conventional hangars. The airport presently reports 13 aircraft on the waiting list for hangars. Historic and forecast FDOT aviation activity information on file for the LaBelle Municipal Airport is as follows:

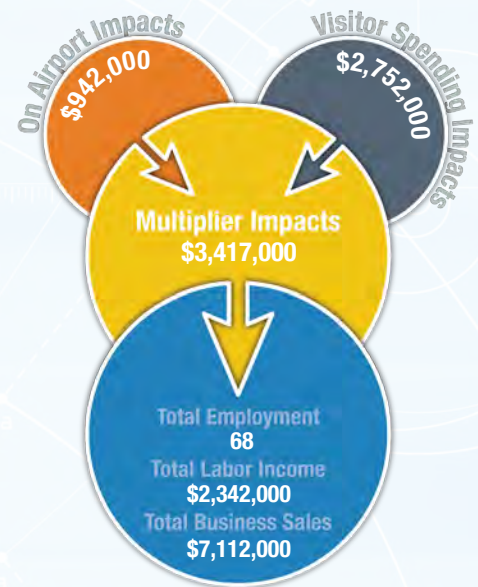




# Economic Impact

La Belle Municipal Airport is in Hendry County, approximately 30 miles east of Fort Myers. The airport has one asphalt runway that measures 5,254 feet. The airport can accommodate small business jet aircraft and serves a range of general aviation activities.

The airport primarily supports recreational flying, flight training, and agricultural spraying. The airport also serves transient aircraft visiting the area or stopping for fuel. Off-site flight schools and local pilots occasionally offer flight trainings at the airport. The airport also occasionally accommodates corporate and business activity for the region. The airport includes fixed base operator (FBO) services and low-priced fuel for local and transient users. The airport's tenants, including one that provides aircraft maintenance and one that is an aircraft parts distributor, contribute to its economic impact.



## Other Airport Characteristics

The main uses of the LaBelle Municipal Airport include recreational flying, flight training, and business flights. The airport supports local farmers and is occasionally utilized for agricultural spraying. The airport also participates in a youth program called Young Eagles. This program encourages children to fly by allowing them to visit the airport and its facilities.

## Current and Future System Service Requirements/Recommendations

The airport provides Flight Training, Recreational/Sport and Business/Recreational (agricultural spraying, traffic reporting, medical flights, environmental patrol, and firefighting) services. Flight training is provided by a freelance flight instructor. There are no formal flight schools at the airport. The analysis shows that the airport is not well suited to support any services. The airport would like to attract a formal flight school, but based on its highest quotient the best future use of the airport is providing Recreational/Sport services.

### General Aviation Airport Role



Recreational/Sport



FLORIDA DEPARTMENT OF TRANSPORTATION  
AVIATION AND SPACEPORTS OFFICE  
[www.fdot.gov/aviation](http://www.fdot.gov/aviation)