

NORTH PALM BEACH COUNTY G.A.

F45



Airport: North Palm Beach County General Aviation (F45)

City: West Palm Beach, Florida

County: Palm Beach

Sponsor: Palm Beach County

Role: General Aviation
Reliever (Regional)

CFASPP Region: Southeast
(cfaspp.com)

FDOT District: 4

Website: [North Palm Beach](https://www.northpalmbeach.com)

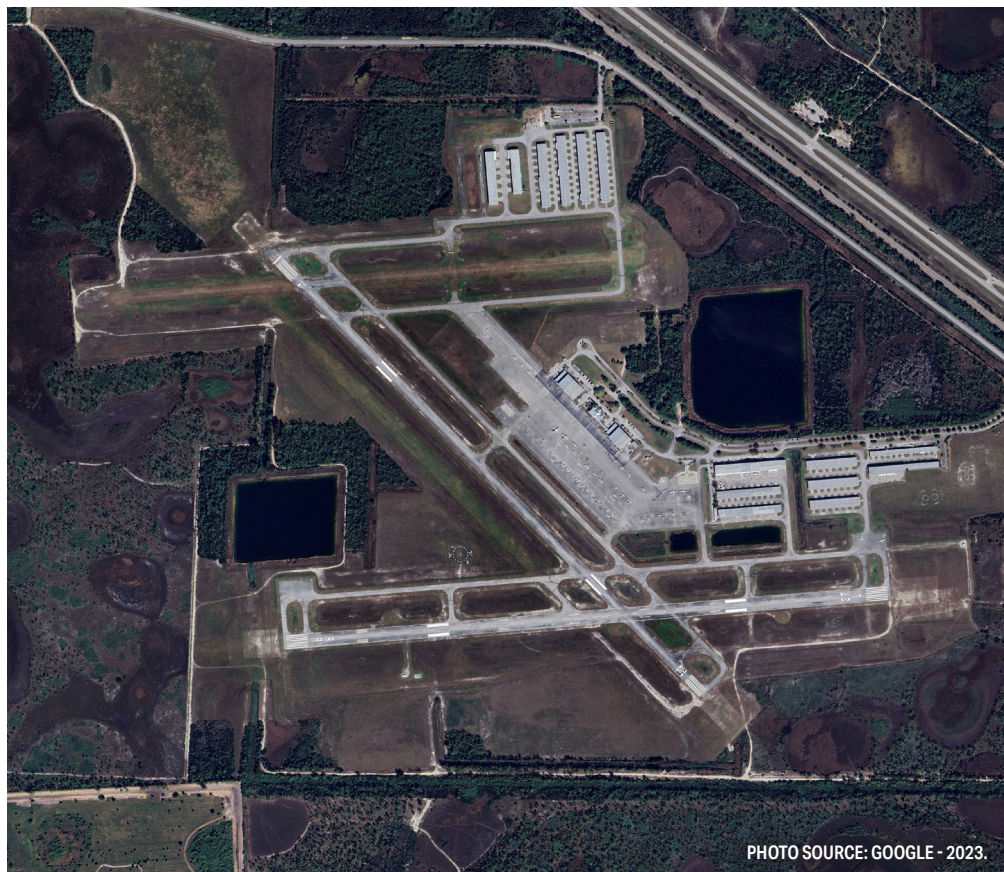
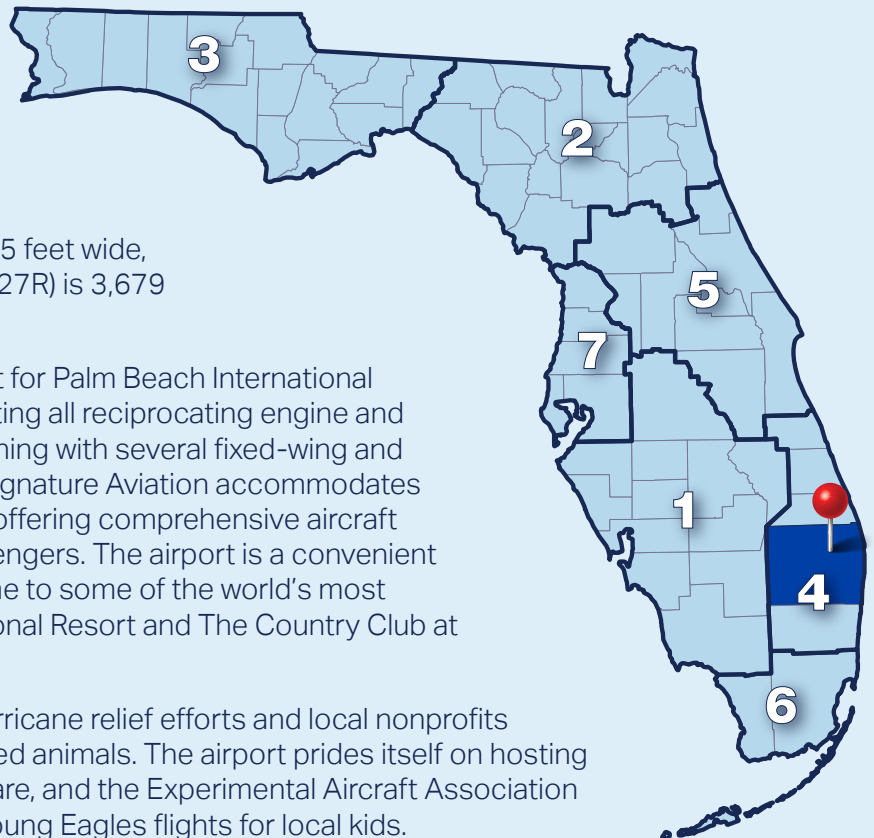


PHOTO SOURCE: GOOGLE - 2023.

North Palm Beach County General Aviation Airport (F45) is approximately 14 miles northwest of West Palm Beach along the north end of The Palm Beaches. The airport provides two paved runways (Runways 9R-27L and 14-32) each measuring 4,300 feet long and 100 and 75 feet wide, respectively. A parallel turf runway (Runway 9L-27R) is 3,679 feet long by 75 feet wide.

F45 serves as a general aviation reliever airport for Palm Beach International Airport (PBI) with the capability of accommodating all reciprocating engine and some jet aircraft. F45 mainly receives flight training with several fixed-wing and helicopter flight schools based at the facility. Signature Aviation accommodates the frequent corporate and business travel by offering comprehensive aircraft line services and amenities for pilots and passengers. The airport is a convenient gateway into nearby Palm Beach Gardens, home to some of the world's most renowned golf facilities including the PGA National Resort and The Country Club at Mirasol.

The airport has served as a staging area for hurricane relief efforts and local nonprofits occasionally use the airport to transport rescued animals. The airport prides itself on hosting Angel Flights for veterans in need of medical care, and the Experimental Aircraft Association (EAA) relies on a donated hangar to conduct Young Eagles flights for local kids.

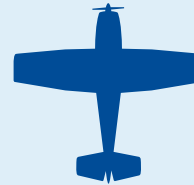


ECONOMIC IMPACT**\$77.3M**
ECONOMIC IMPACT (OUTPUT)**\$36.5M**
VALUE ADDED**\$22.4M**
PAYROLL**467**
JOBS

Source: Florida Aviation Economic Impact Study.

**GENERAL AVIATION ROLES**FLIGHT
TRAINING

CORPORATE

RECREATIONAL /
SPORTBUSINESS /
RECREATIONAL

Source: FASP 2043 Update.

For more information on airport roles, please refer to the
FAA's National Plan of Integrated Airport Systems (NPIAS).**ACTIVITY
FORECASTS****OPERATIONS****116,715**

2043

92,924

2023

BASED AIRCRAFT**268**

2043

192

2023

Source: FASP 2043 Update.

**AIRPORT CHARACTERISTICS****1** Reliever to Palm
Beach International
Airport**2** Serves as a Staging
Area for Emergency
Response Efforts**3** Close to World-
Renowned Golf
Courses**RUNWAY INFORMATION (3)**

Runway 9R-27L: 4,300' x 100'

Runway 14-32: 4,300' x 75'

Turf Runway 9L-27R: 3,679' x 75'

**Overview of the FASP 2043 Update:**

Per Florida statute, the Florida Aviation System Plan (FASP) is periodically updated to summarize the airport and aviation needs in Florida while remaining consistent with the goals of the Florida Transportation Plan (FTP). The FASP 2043 Update focuses on reviewing the applicability of the various goals, objectives, and performance measures to support two primary goals: 1) provide for more efficiency in decision making within FDOT to support funding and development decisions, and 2) provide airports within the system with recommendations for development that support their individual missions while contributing to the overall strength and health of the Florida airport system.

