

Wauchula Municipal Airport



FLORIDA DEPARTMENT OF TRANSPORTATION
AVIATION AND SPACEPORTS OFFICE

Airport: Wauchula Municipal Airport
(CHN)

City: Wauchula, Florida

County: Hardee County

Owner: City of Wauchula

Role: General Aviation Airport

Located in Hardee County, approximately five miles southwest of Wauchula, Wauchula Municipal Airport serves many types of general aviation activities. With its single 4,005-foot runway, the airport can accommodate small multi-engine general aviation aircraft.



Existing Facilities

Facilities at the Wauchula Municipal Airport include runway 18/36. Runway 18/36 is asphalt and measures 4,005 feet by 75 feet. It is equipped with medium intensity runway edge lights and precision approach path indicators. The runway also utilizes the RNAV GPS instrument approach procedure and is served by a full length lighted parallel taxiway that measures 35 feet wide. Other facilities at the airport include a fixed base operator office that provides a small pilot's lounge. There is vehicular parking typically accommodated in the grass areas. There are also currently 19 tie-down spaces and 100LL fuel available for aircraft using the airport.

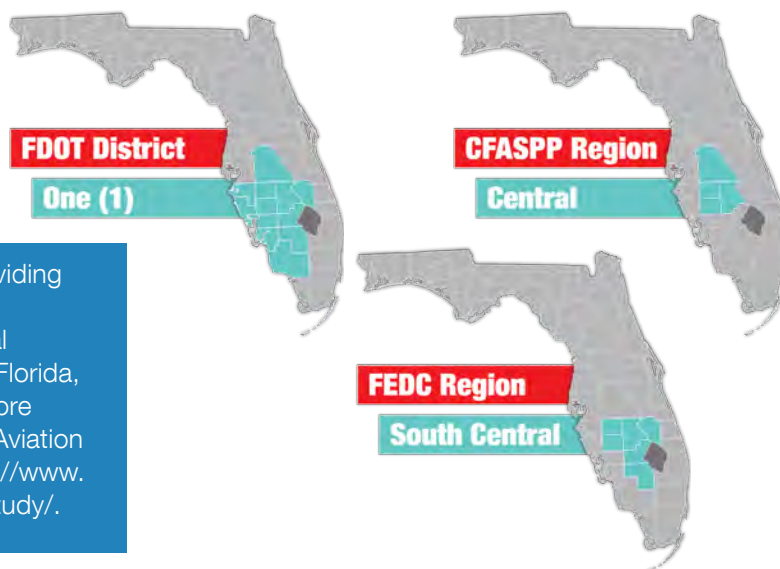
For more information, please visit CHN's website at:
<https://www.cityofwauchula.com/wauchula-municipal-airport>



Airport Classification



Local airports serve communities by providing access to primarily intrastate and some interstate markets. There are 1,278 Local Asset airports nationwide and 29 within Florida, including Wauchula Municipal Airport. More information can be found in the Federal Aviation Administration's ASSET Studies at https://www.faa.gov/airports/planning_capacity/ga_study/.





Florida by the Numbers



Community Service

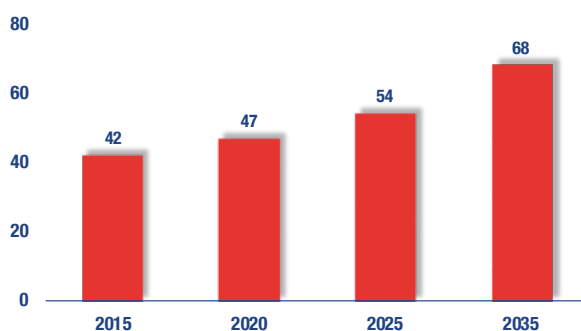


The Wauchula Municipal Airport serves the GA needs of the region. The main use of the airport is for recreational flying by local and transient aviators. For the 12-month period ending on July 12, 2017, approximately 59 percent of all operations were attributable to transient aviation while about 41 percent were due to local aviation. Another important activity that is supported by the airport is business activity. The airport estimates that about 20 percent of its annual operations are business related. The primary business users of the airport are local banks and spray operators that serve the local agricultural industry. Flight trainings and military trainings also occur at the airport and make up approximately 10 percent of the airport's annual operations. There is also a not-for-profit organization that occupies one of the largest hangar facilities at the airport. This organization concentrates on aircraft engine repairs and has flown donated goods and missionary personnel to Belize since their beginning at the airport. The airport does not have any based military aircraft and does not accommodate transient military operations.

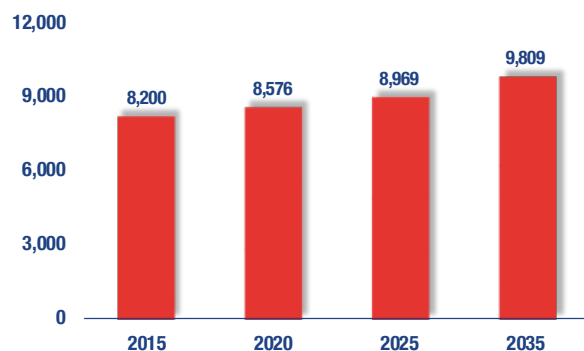
Current and Forecast Demand

The Wauchula Municipal Airport plays an important role in serving many different facets of GA. As of 2014, there were 45 based aircraft and a total of 8,200 annual operations at the airport. Of the based aircraft, the majority are single-engine airplanes with the remaining being multi-engine airplanes and ultralights. It is estimated that 56 percent of the based aircraft are stored on paved tie-downs and 44 percent are stored in T-hangars or conventional hangars. The largest plane that uses the airport on a regular basis is a Beechcraft King Air C90-1 and the current Airport Reference Code is B-II. Historic and forecast FDOT aviation activity information on file for Wauchula Municipal Airport follows:

Based Aircraft



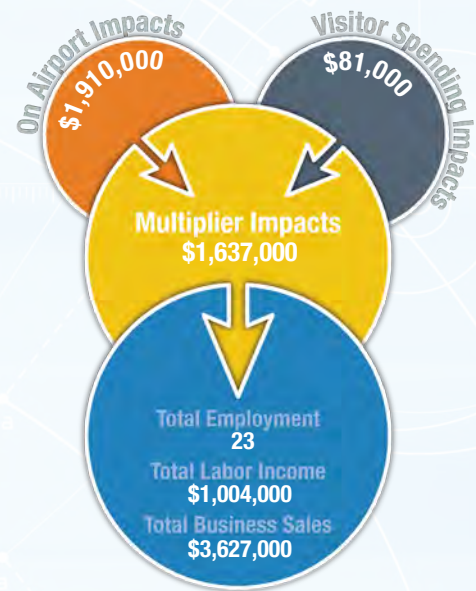
General Aviation Operations



Economic Impact

Wauchula Airport is in Hardee County, approximately 67 miles southeast of Tampa. The airport has one runway that measures 4,005 feet. The airport accommodates small general aviation aircraft and serves many types of general aviation activities.

The airport has several recreational based aircraft and also provides aircraft storage and fueling for local businesses and spray operators that serve the local agricultural industry. Flight instructors use the airport to provide military trainings and general trainings. A not-for-profit organization that provides aircraft engine repairs and conducts annual inspections by certified mechanics occupies one of the largest hangar facilities at the airport. Since its inception, this organization has flown donated goods and missionary personnel to Belize. Rotor craft pilots and dealers from outside of Wauchula hold a four-day event, Bensen Days, every year at the airport, which attraction visitors all over the nation. Visitors stay at local hotels and their spending contributes to the airport's economic impact.



Other Airport Characteristics

The Wauchula Municipal Airport is mainly used for GA recreational flying, business activity, and flight training. Rotor craft pilots and dealers from outside of Wauchula hold a four-day event, Bensen Days, every year at the airport.

Current and Future System Service Requirements/Recommendations

The airport provides Recreational/Sport (experimental, ultralights) and Business/Recreational (skydiving, agricultural spraying) services. The airport plans to increase its flight training, and recreational operations, and initiate charter operations. The airport is best suited for providing Recreational/Sport services, with Tourism (CA) a close second. The airport suffers from a lack of an air traffic control tower, an instrument approach, a low Land Use Compatibility and Financial score, all of which make it unsuitable for future Flight Training and Business/Recreational services.

General Aviation Airport Role



Tourism



Recreational/Sport



Business/Recreational



FLORIDA DEPARTMENT OF TRANSPORTATION
AVIATION AND SPACEPORTS OFFICE
www.fdot.gov/aviation