

Dade-Collier Training and Transition Airport



FLORIDA DEPARTMENT OF TRANSPORTATION
AVIATION AND SPACEPORTS OFFICE

Airport: Dade-Collier Training and Transition Airport (TNT)

City: Miami, Florida

County: Collier County

Owner: Miami-Dade County

Role: General Aviation Airport

Located 40 miles west of Miami-Dade County in Collier County, Dade-Collier Training and Transition Airport can serve all types of aviation activity. With its single 10,499-foot runway and parallel taxiway, the airport can accommodate large commercial jet aircraft and all types of general aviation aircraft.



Existing Facilities

Dade-Collier Training and Transition Airport features a single asphalt runway, runway 9/27. This runway measures 10,499 feet long by 150 feet wide and is equipped with an RNAV GPS and ILS instrument approaches. The runways is served by a full length paved parallel taxiway. The airport also has a 2,000 square-foot administration building to serve its users.

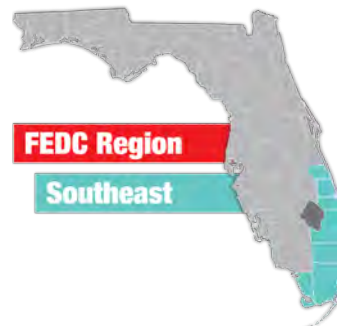
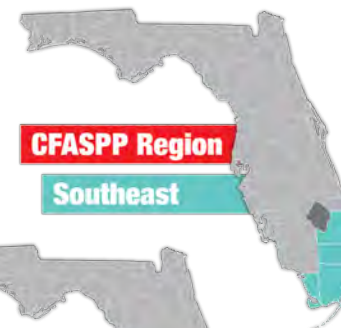
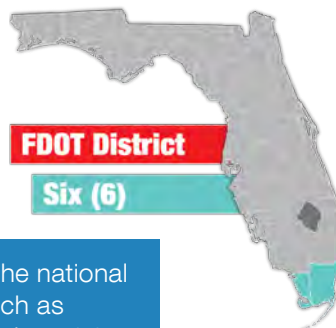
For more information, please visit TNT's website at:
http://www.miami-airport.com/dade_collier.asp



Airport Classification



**BASIC
ASSET
GENERAL**
AVIATION AIRPORT



Basic airports link the community with the national airport system and support activities such as emergency services, charters, cargo, flight training, and personal flying). There are 840 Basic Asset airports nationwide and 11 within Florida, including Dade-Collier Training and Transition Airport. More information can be found in the Federal Aviation Administration's ASSET Studies at https://www.faa.gov/airports/planning_capacity/ga_study/.



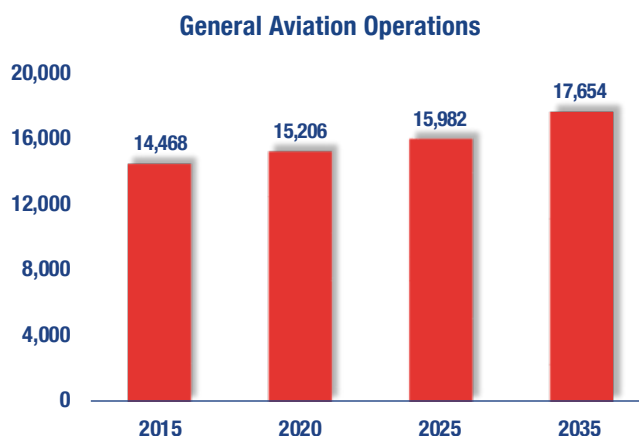


Dade-Collier Training and Transition Airport primarily serves as a precision instrument landing and training facility. Aircraft landing at the airport is on a Prior Permission Required basis for all aircraft, with user fees or for aircraft over 12,500 pounds. The airport's remote location makes it an ideal facility for pilots to practice precision instrument landings and touch-and-go landings. It is an important training facility in South Florida for commercial pilots, private training, and a small number of military exercises. Despite the training nature of the airport's operations, the airport does not have any local trade or post-secondary educational facilities located at the airport.



Current and Forecast Demand

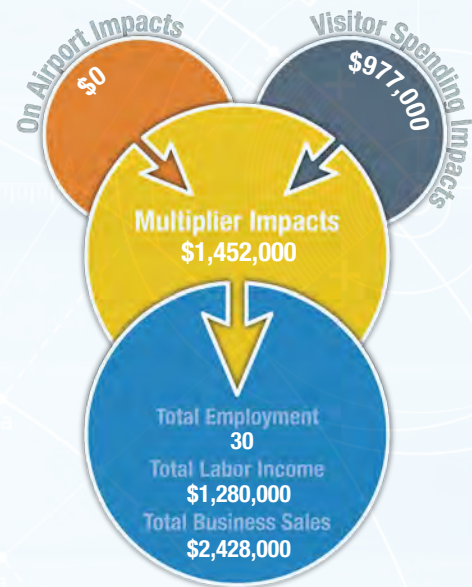
According to the Florida Aviation System Plan data, in 2014 there were no aircraft based at Dade-Collier Training and Transition Airport. During the same time period, there were 14,468 total operations. For the 12-month period ending on October 26, 2016, 100 percent of all operations were attributable to transient GA aviation. Commercial jet aircraft are the largest class of airplanes that use the airport on a regular basis. Historic and forecast FDOT aviation activity information on file for Dade-Collier Training and Transition Airport is as follows:



Economic Impact

Dade-Collier Training and Transition Airport is located in Collier County within the Florida Everglades, approximately 45 miles west of Miami. The airport has one runway that measures 10,499 feet. The airport accommodates general aviation and large commercial jet aircraft.

The airport primarily supports recreational flying, aerial firefighting, military exercises, law enforcement, and flight training. The primary purpose of the airport is to act as a training facility for pilots in the local region. The airport does not accommodate visitors, so the airport's economic impacts are solely associated with maintenance and upkeep.



Other Airport Characteristics

The main activity that occurs at the Dade-Collier Training and Transition Airport is flight training. There are no flight training schools at the airport nor are there any based aircraft, so all of the operations come from transient aircraft utilizing the airport for training activities. Other activities that occasionally occur at the airport include recreational flying, aerial firefighting, military exercises, and law enforcement activity.

Current and Future System Service Requirements/Recommendations

The airport is expected to remain the same in regards to its significance to the aviation system and number of operations. Its limited revenue-generating capabilities, the adverse environmental impact to the Everglades, manmade factors, and community relations each restrict the future growth of this airport. The airport is set up exclusively as a transient training facility for commercial pilots practicing instrument landings. As such it only provides Flight Training services. Its low Land Use Compatibility, and financial scores, as well as its lack of an air traffic control tower, diminishes its viability for Flight Training other than those elements of the industry for which it was designed. The airport has no plans to provide anything other than Flight Training services and this is the only future service it is expected it will provide.

Based on the infrastructure planning analysis for Dade-Collier Training and Transition Airport, the following chart illustrates the airport's current levels of service as well as the types and levels of service that the airport will likely be required to accommodate by the year 2030:

General Aviation Airport Role



Flight Training



FLORIDA DEPARTMENT OF TRANSPORTATION
AVIATION AND SPACEPORTS OFFICE
www.fdot.gov/aviation