

# Melbourne International Airport



FLORIDA DEPARTMENT OF TRANSPORTATION  
AVIATION AND SPACEPORTS OFFICE

**Airport:** Melbourne International Airport (MLB)

**City:** Melbourne, Florida

**County:** Brevard County

**Owner:** Melbourne Airport Authority

**Role:** Commercial Service Airport



Melbourne International Airport is located on Florida's Space Coast, approximately two miles northwest of downtown Melbourne, in Brevard County. The airport has three active runways, the longest of which is 10,181 feet. Facilities at the airport are capable of supporting a full range of commercial and general aviation aircraft.



## Existing Facilities

Melbourne International Airport is served by three asphalt runways: runway 9R/27L, runway 9L/27R, and runway 5/23. Runway 9R/27L measures 10,181 feet by 150 feet and utilizes ILS, LOC BC, VOR, and RNAV GPS instrument approaches. Runway 9L/27R measures 6,000 feet by 150 feet and utilizes RNAV GPS instrument approach. Runway 5/23 is the shortest and measures 3,001 feet by 75 feet. All three runways are served by full length parallel taxiways, equipped with precision approach path indicators lights and runway edge lights. The airport provides 80 tie-downs and 221 covered parking spaces for aircraft in its T-hangars and conventional hangars. The airport includes a 200,000 square-foot passenger terminal building with eight aircraft gates. There is also an air traffic control tower at the airport that is operational 24 hours a day, seven days a week.

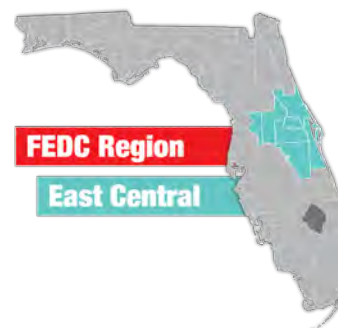
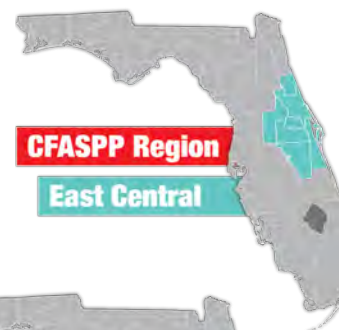
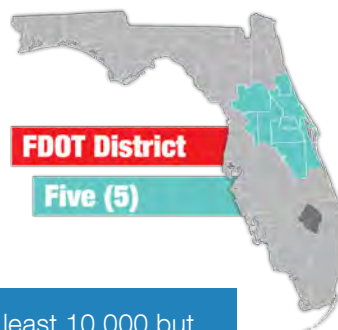
Melbourne International's GA needs are served by three FBO's: Atlantic Jet Center, F.I.T. Aviation, and Apex Executive Jet Center. Between the three, a full range of maintenance, repair, flight training, parking, and fueling services are provided. Additionally, Melbourne International is served by its own police force, the Melbourne Airport Police Department. The airport's Master Plan Update was completed in 2018. Additionally, the current Airport Reference Code for the airport is D-IV.

For more information, please visit MLB's website at:

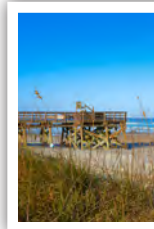
<http://www.mlair.com/>



## Airport Classification



Nonhub Primary airports account for at least 10,000 but less than 0.25% of national passenger boardings. There are 247 Nonhubs nationwide and 6 in Florida, including Melbourne International Airport. Nonhub Primary airports typically serve a large volume of general aviation activity with fewer passenger and air cargo operations. More information can be found at [https://www.faa.gov/airports/planning\\_capacity/npas/](https://www.faa.gov/airports/planning_capacity/npas/).





## Community Service



Melbourne International Airport supports a full range of commercial and GA activity. The airport is utilized for a mix of personal, leisure, and business-related travel due to its proximity to attractions such as Port Canaveral, the Kennedy Space Center, and the many beach towns and resort communities in Brevard County. Commercial airline service is provided by Delta and American Airlines, who offer daily non-stops to their respective hubs in Atlanta and Charlotte. Elite Airways and Porter Airlines also provide commercial service.

Melbourne International Airport is unique due to the concentration of aerospace and high-technology businesses located at the airport. Some of the major tenants include:

- **Northrop-Grumman**- One of the top defense contractors in the country, Northrop Grumman, recently won a contract to develop the U.S. Air Force's next generation Long Range Strike Bomber, spurring \$500 million in ongoing development at Melbourne International.
- **Embraer Executive Jets**- The Brazilian aerospace conglomerate operates a 450,000-square foot business jet assembly facility at Melbourne International.
- **Harris Corporation**- Another leading defense contractor, the Harris Corporation develops communications, electronics, and intelligence systems from its world headquarters at Melbourne International.

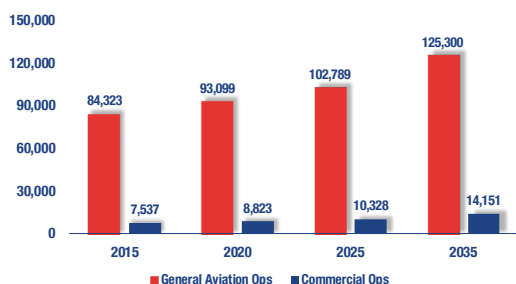
- **Rockwell Collins**- A world leader in avionics, Rockwell Collins manufactures and tests aviation electronics at Melbourne International.

Another major tenant is the Florida Institute of Technology, which operates the Florida Tech Research Park at the airport, an ongoing development of cutting edge aeronautical research and development facilities. Florida Tech also acts as an FBO at Melbourne International through F.I.T. Aviation, LLC, where flight training services are offered.

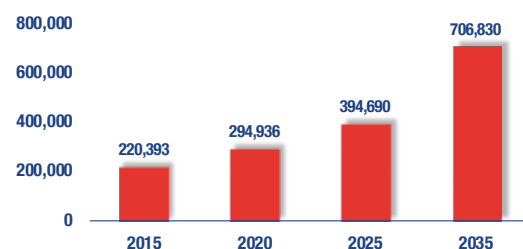
## Current and Forecast Demand

Melbourne International Airport serves commercial and GA activity for the region. As of 2014, there was 235 based aircraft and 132,316 total operations. Of the total based aircraft, the majority are single-engine airplanes with the rest being multi-engine airplanes, jet airplanes, helicopters, and military aircraft. Approximately two percent of the based aircraft are stored on paved tie-downs and 98 percent are in T-hangers or conventional hangars. The airport presently reports a waiting list for hangars to store 33 aircraft. The current Airport Reference Code for the airport is D-IV.

Operations



Enplanements

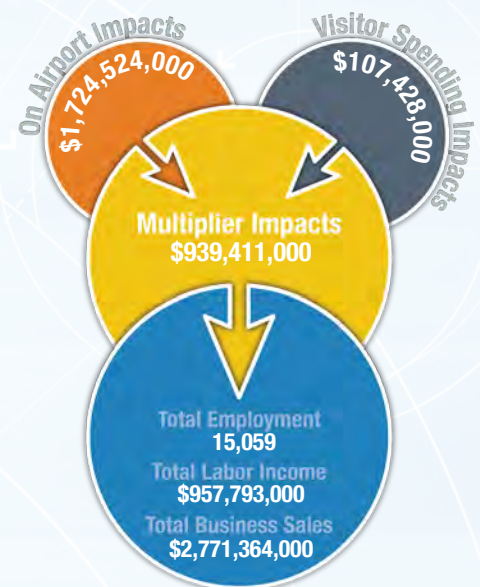




# Economic Impact

Melbourne International Airport is located in Brevard County, about two miles north of downtown Melbourne. The airport has three runways, with the longest runway measuring 10,181 feet. The airport can accommodate both commercial and general aviation aircraft.

The airport is in a convenient location to serve tourists traveling to either the Space Coast or to Orlando, as well as the nearby Port Canaveral, one of the busiest cruise ship ports in the world. The airport primarily supports tourism, business activity, and recreational flying. The airport also supports certified aircraft mechanics, pilot training and certification, and aircraft leasing. The airport is one of Brevard County's top employers and has a rapidly growing aviation-manufacturing-and-maintenance cluster. The airport has its own police department and is staffed full-time. A fixed based operator (FBO) is available at the airport to serve user's needs. The airport also hosts the annual Melbourne Air & Space Show, a two day show full of exciting performances and interesting aircraft displays.



## Other Airport Characteristics

Melbourne International Airport serves the commercial airline, air cargo, and GA needs of the community. In 2017, there were two based military aircraft at the airport and less than one percent of the annual operations were due to military operations. These military operations are performed by a number of military branches using jet transport type aircraft. The airport also supports a Foreign Trade Zone on-site.

## Current and Future System Service Requirements/Recommendations

Among the services the Melbourne International Airport currently provides are Flight Training, Corporate, Recreational/Sport, Tourism, Air Cargo, and Business/Recreational (sightseeing, real estate tours, charter, military, coastal patrol/rescue, medical flights) services. The airport plans to increase its flight training, recreational, corporate and charter operations. It would also like to increase its scheduled service to include more domestic destinations and international destinations. Analysis indicates that the airport is best suited for providing Recreational/Sport, Flight Training, Tourism, and Business/Recreational, and Corporate services as well as Tourism and Business services in a Commercial Service role. The airport in the past has provided some air cargo service for high value, space-related cargo being shipped to the Cape Canaveral spaceport complex. Melbourne International has an impressive infrastructure to support a growing industrial base, and increased levels of air carrier flights, but suffers approximately 78 percent leakage to other commercial service airports, primarily Orlando International.

### Commercial Service Role



Tourism



Air Cargo



Business



International

### General Aviation Airport Role



Flight Training



Corporate



Recreational/Sport



Business/Recreational



FLORIDA DEPARTMENT OF TRANSPORTATION  
AVIATION AND SPACEPORTS OFFICE  
[www.fdot.gov/aviation](http://www.fdot.gov/aviation)