

Leesburg International Airport



FLORIDA DEPARTMENT OF TRANSPORTATION
AVIATION AND SPACEPORTS OFFICE

Airport: Leesburg International Airport
(LEE)

City: Leesburg, Florida

County: Lake County

Owner: City of Leesburg

Role: General Aviation Airport

Located approximately three miles northeast of Leesburg in central Florida, Leesburg International Airport serves a variety of general aviation activities. With its two intersecting runways, the longest of which is 6,300 feet, the airport can accommodate aviation business jet aircraft. The airport is conveniently located near major highways including Florida's Turnpike and U.S. Highways 27 and 441. The airport's terminal is ideal for serving local users as well as those visiting the area.



Existing Facilities

Leesburg International Airport is an official Port of Entry into the United States and offers U.S. Customs and Border Protection inspections. The airport is served by two asphalt intersecting runways, runway 13/31 and runway 3/21. Runway 13/31 is the longest and measures 6,300 feet by 100 feet, while runway 3/21 measures 4,957 feet by 100 feet. Both runways are equipped with precision approach path indicator lights, RNAV GPS instrument approaches, and full-length parallel taxiways. The airport also has a 4,000-square foot terminal with 31 paved automobile parking spaces. Between the airport's T-hangars and conventional hangars, there are 130 covered parking spaces for general aviation aircraft. There are also 41 aircraft tie-down parking spaces.

For more information, please visit Leesburg International Airport's website at:

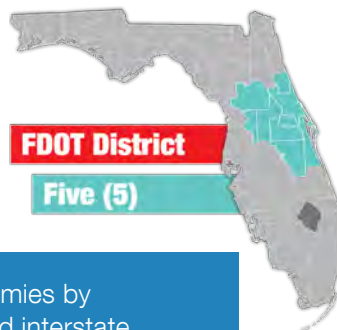
<https://www.leesburgflorida.gov/government/departments/airport/index.php>



Airport Classification



**REGIONAL
ASSET
GENERAL
AVIATION AIRPORT**



**FDOT District
Five (5)**



**CFASPP Region
East Central**



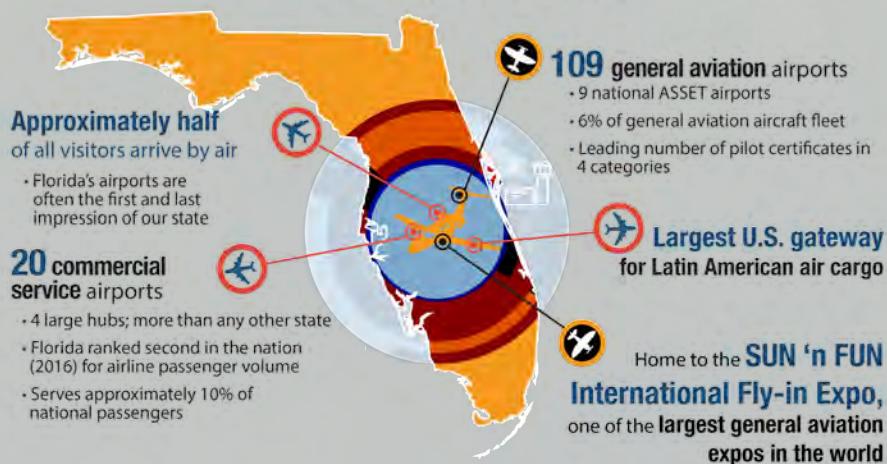
**FEDC Region
East Central**

Regional airports support regional economies by connecting communities to statewide and interstate markets. There are 492 Regional Asset airports nationwide and 30 within Florida, including Leesburg International Airport. More information can be found in the Federal Aviation Administration's ASSET Studies at https://www.faa.gov/airports/planning_capacity/ga_study/.





Florida by the Numbers



Community Service



Leesburg International Airport acts as a transportation hub for the surrounding region. The airport is a Port of Entry to the United States due to its U.S. Customs and Border Protection office, which allows the establishment of a Foreign-Trade Zone and for international flights to be cleared. The main GA activities at the airport are recreational flying, flight training, and business activity. The airport is ideal for business since it is located close to Florida's commerce hubs in Orlando, Tampa, Jacksonville, and Miami. The airport estimates that 15 percent of its annual GA operations are business related while about ten percent of the airport's based aircraft are owned by local businesses. Local companies that use the airport's general aviation facilities include The Villages Equipment Company, Mission Inn, Orlando Financial Corp., Phillips Auto Sales, and Aerostat, Inc. Flight training is another common use of the airport due to the lower volume of traffic that flows through. Flight training is provided by the airport's fixed base operator, SunAir Aviation, who employs four instructors. These businesses employ nine total flight instructors and have 16 aircraft that are based at the airport.

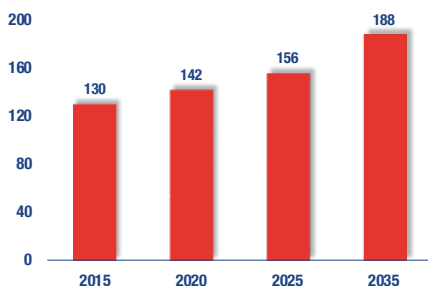
Recreational flying is also common at Leesburg International. Visitors are drawn to the area due to the abundance of lakes, golf courses, and theme parks. An aircraft maintenance business, Av-Mech LLC, and the airport's FBO, Sunair Aviation, provide users with a full range of GA services. Other businesses at the airport include Aerostat Inc., a producer of equipment for aerial prescribed burns and fire management, and Firehawk and Brainerd Helicopters, the only company to operate commercial Blackhawk helicopters for aerial firefighting and other services. Power and utility companies also utilize the airport for local aerial inspections. The airport provides full-service 100LL Avgas and jet-A fuel. The airport also offers aircraft maintenance, painting, upholstery, avionics installation, and instrument repair.



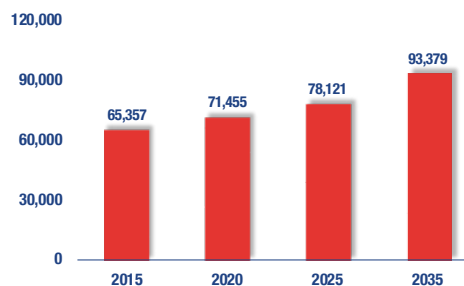
Current and Forecast Demand

The Leesburg International Airport serves many facets of general aviation for the surrounding area. As of 2014, there were 149 based aircraft with the majority being single engine airplanes. Small to mid-range business jets also utilize the airport. Of the total based aircraft, approximately 38 percent are stored on paved tie-downs and 62 percent are in T-hangars or conventional hangars. The airport presently reports a waiting list for hangars that shows 46 aircraft. There were also 52,144 total annual operations as of 2014. The current Airport Reference Code for the airport is CIII-5000.

Based Aircraft



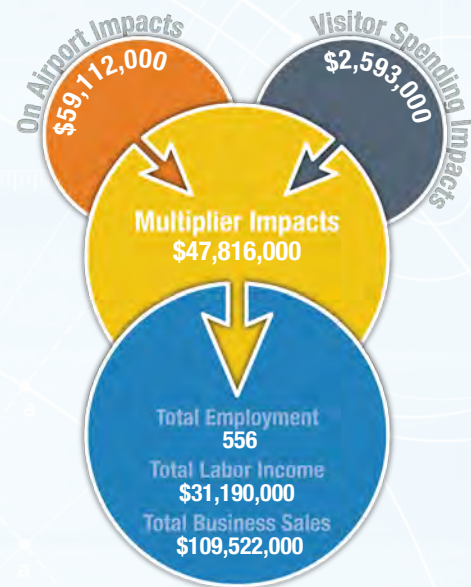
General Aviation Operations



Economic Impact

Leesburg International Airport is located in Lake County, approximately 42 miles northwest of downtown Orlando. The airport has two intersecting runways, with the longest runway measuring 6,300 feet. The airport is a Port of Entry into the U.S. and accommodates general aviation aircraft, including business jet aircraft.

The airport primarily supports recreational flying, business activity, and flight training. The airport's tenants, such as a helicopter charter company, contribute to its economic impact. An on-site aircraft maintenance business serves local and transient users. The airport supports the local region by offering assistance during hurricanes, as well as hosting Fly-In events. Instructors at the airport provide Navy helicopter training, among other types of military training.



Other Airport Characteristics

The Leesburg area boasts flexible and efficient multi-modal transportation, making it easily accessible by air, sea and land. The Leesburg International Airport has been designated a Gold Seal Airport by the Florida Department of Transportation, recognized for its high standards for infrastructure, service, and safety to the flying public. The airport had its most recent master plan completed in 2000.

Current and Future System Service Requirements/Recommendations

The airport provides flight training, Corporate, recreational/sport (experimental, ultralights), and business/recreational (sightseeing, real estate tours, charter, military, medical flights, environmental patrol) services. The airport plans to increase its flight training, recreational, corporate, and charter operations. The analysis indicates that the airport is best suited for providing Flight Training, Recreational/Sport, and Tourism (CA) services. It is currently marginally suitable for Corporate and Business/Recreational services, but the planned improvements to the airfield will enhance the Airport's ability to provide those services.

General Aviation Airport Role



FLORIDA DEPARTMENT OF TRANSPORTATION
AVIATION AND SPACEPORTS OFFICE
www.fdot.gov/aviation