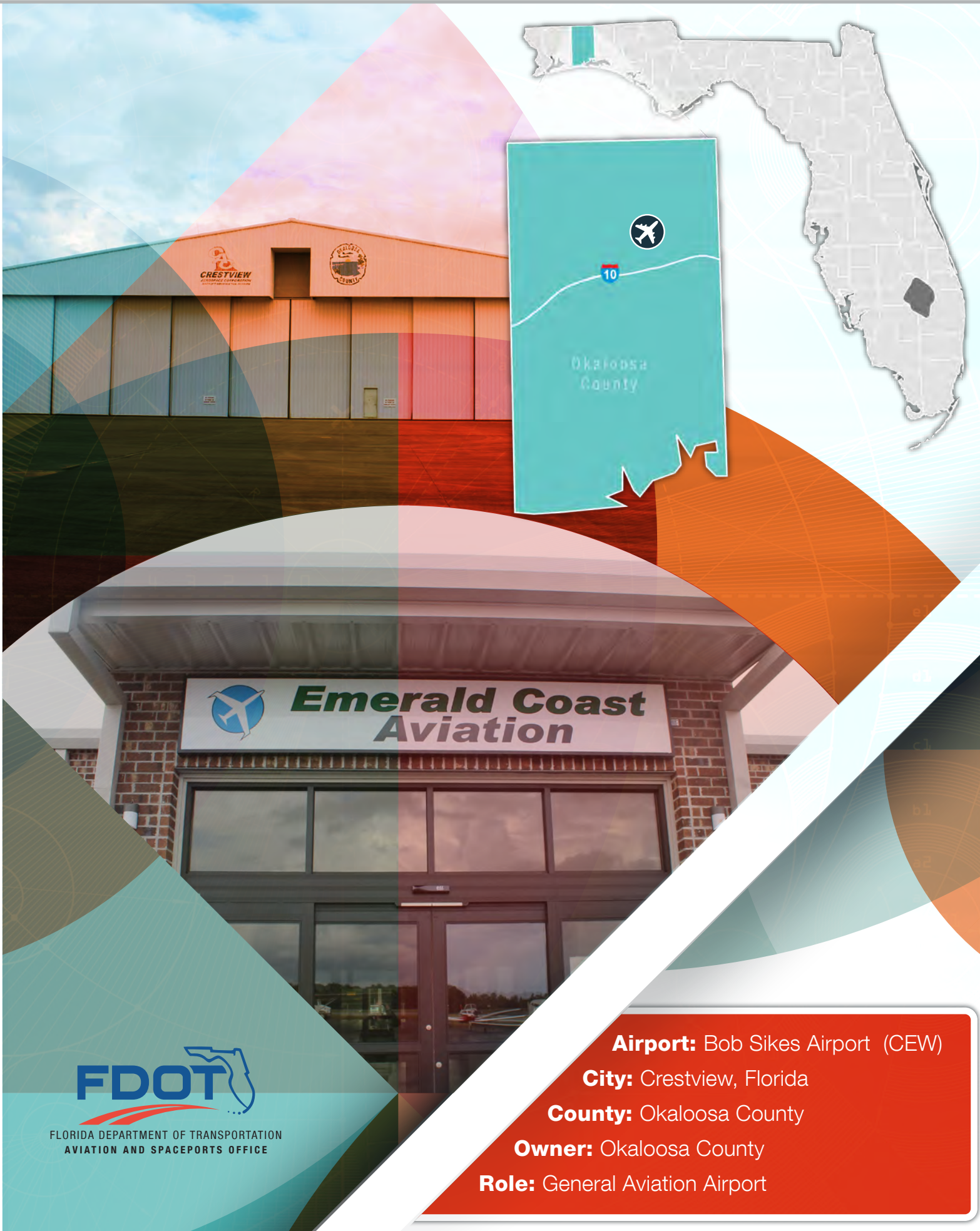


# Bob Sikes Airport



**Airport:** Bob Sikes Airport (CEW)

**City:** Crestview, Florida

**County:** Okaloosa County

**Owner:** Okaloosa County

**Role:** General Aviation Airport



FLORIDA DEPARTMENT OF TRANSPORTATION  
AVIATION AND SPACEPORTS OFFICE



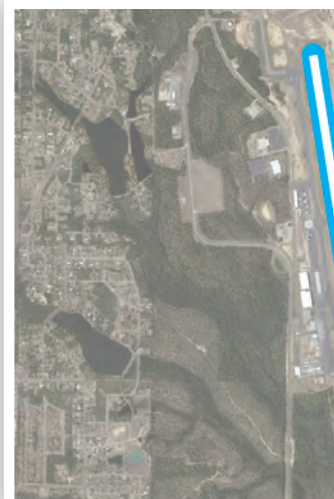
Located in Okaloosa County, approximately 25 miles north of Destin, Bob Sikes Airport serves many types of general aviation and military activities. With its single 8,004-foot runway, the airport can accommodate most general aviation aircraft, including large corporate jets, as well as large military transport aircraft such as the Boeing C-17. C-17s are used to deliver helicopters to L-3 Crestview Aerospace, a defense contractor and the airport's largest tenant. The airport's terminal is ideal for serving local users as well as those visiting the area.



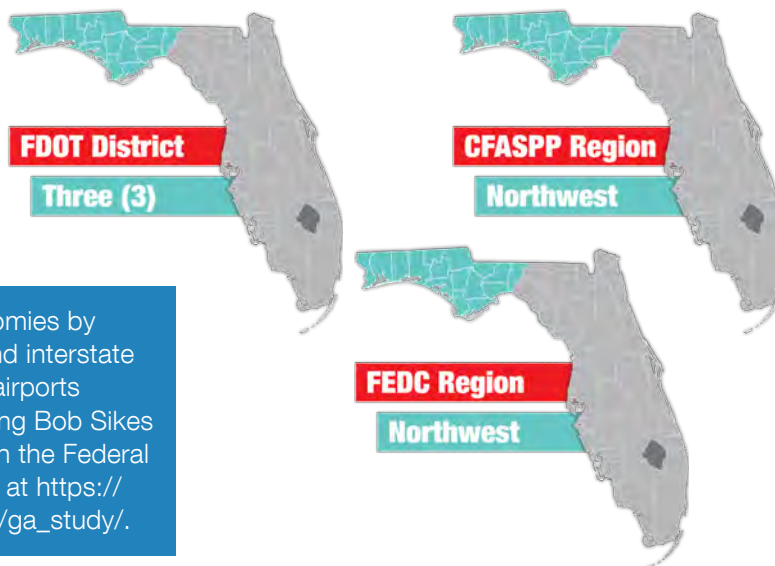
## Existing Facilities

Facilities at the Bob Sikes Airport include runway 17/35. Runway 17/35 is asphalt and measures 8,004 feet long by 150 feet wide. It is equipped with medium intensity edge lights, visual approach slope indicators (being replaced in 2019 with precision approach path indicators), and has ILS and RNAV GPS instrument approach procedures. The airport's fixed base operator, Emerald Coast Aviation, provides flight instruction and full service maintenance for local and visiting users.

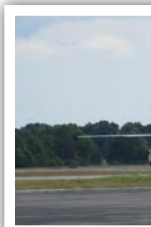
For more information, please visit CEW's website at:  
<https://www.flycew.com/>



## Airport Classification



Regional airports support regional economies by connecting communities to statewide and interstate markets. There are 492 Regional Asset airports nationwide and 30 within Florida, including Bob Sikes Airport. More information can be found in the Federal Aviation Administration's ASSET Studies at [https://www.faa.gov/airports/planning\\_capacity/ga\\_study/](https://www.faa.gov/airports/planning_capacity/ga_study/).

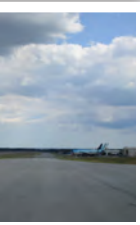




## Community Service

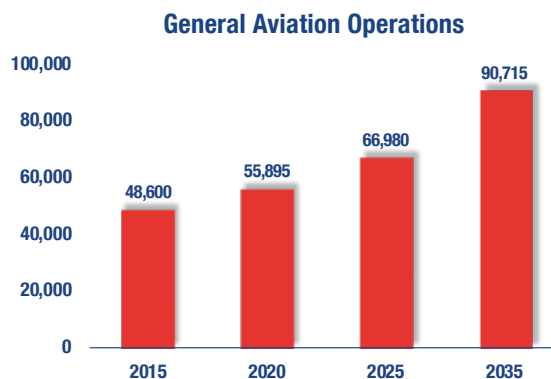
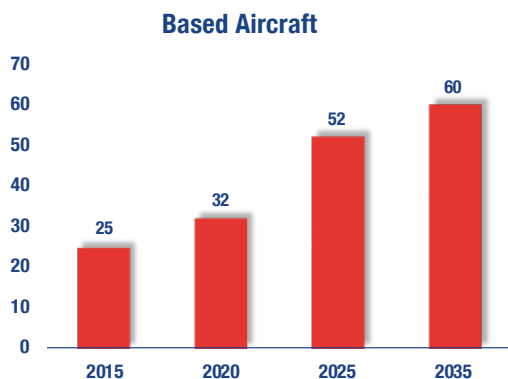


Bob Sikes Airport accommodates large military transport aircraft and serves many types of general aviation and military activities. A main use of the airport is for military exercises. Surrounding military bases utilize the airport for military flight training and career education. Military operations make up about 8 percent of the airport's annual operations. The airport also serves recreational flying, flight training, and business activity. The airport succeeds at defense and industrial aerospace development. It is also a haven for modification and conversion companies due to the available land for lease at an adjacent air industrial park. General aviation operations by corporate and business users are common at the airport. The airport estimates that 40 percent of its annual general aviation operations are business related. Local companies that use the airport's general aviation facilities include military industrial contractors. The airport also attracts a number of transient general aviation aircraft. For the 12-month period ending on March 14, 2017, approximately 60 percent of all operations were attributable to visiting aircraft while 32 percent were due to local aircraft. Career training also takes place at the airport due to its Apprenticeship Program which services over 100 high school students in developing skills in the aviation industry.



## Current and Forecast Demand

Bob Sikes Airport plays an important role in serving different facets of GA. As of 2014, there were 25 based aircraft and 48,600 total operations at the airport. Of the based aircraft, the majority are single engine airplanes with the remaining being multi-engine propeller and jet aircraft. The largest plane using the airport on a non-routine basis is a Boeing C-17 which is used to deliver helicopters for maintenance. Historic and forecasted FDOT aviation activity information on file for the airport is as follows:

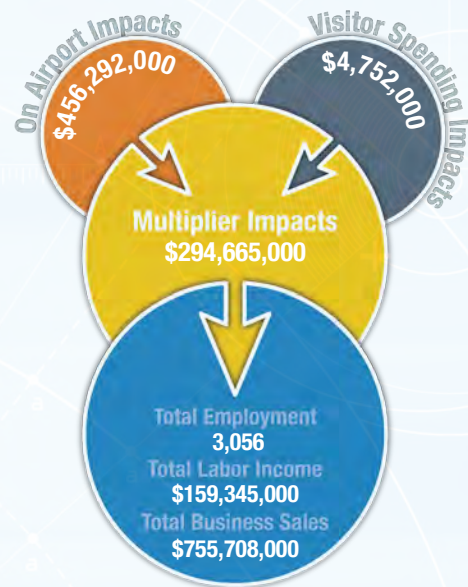




# Economic Impact

Bob Sikes Airport is located in Okaloosa County, approximately three miles northeast of downtown Crestview. The airport has one runway that measures 8,004 feet. The airport accommodates large military transport aircraft and serves many types of general aviation and military activities.

The airport primarily supports military exercises, with nearby military bases conduct military flight trainings and career education at the airport. The airport's tenants, such as a corporate contractor, a large employer at the airport, contribute to its direct economic impact. The airport is engaged in the community and hosts an annual Open House to showcase the facility. The airport also acts as a disaster response staging area for natural disasters.



## Other Airport Characteristics

Bob Sikes Airport mainly serves business activity and military operations. Military aviation traffic at the airport is significant because of the runway's ILS instrument approach procedure which military aviators take full advantage of to sharpen their skills. Other activities that occur at the airport include air taxi operations which make up about 1 percent of the airport's annual operations. The airport also engages in the community by hosting an annual open house to showcase the facility.

## Current and Future System Service Requirements/Recommendations

The facility is in a location that is well suited to accommodate and encourage heavy and light industrial uses. It should also be noted that intermodal air cargo transport is being pursued as a primary service objective, as well as military related aircraft modifications for US and NATO aircraft. With an 8,000-foot runway, proximity to the technical industry within the Eglin/Fort Walton Beach complex, and sufficient available industrial development capacity at Bob Sikes, the airport could easily support both the heavy touch and go (military) operations and related simulator activity. Additionally, proximity to Florida's Emerald Coast recreation areas and beaches makes Bob Sikes attractive to potential simulator candidates, in addition to attracting tourists. Future projects include a commercial access road; runway rehabilitation; south apron rehabilitation; rehab and addition of high mast lights; construction of T-hangers; and replacing VASI with PAPI lights.

### General Aviation Airport Role



Flight Training



Recreational/Sport



Corporate



FLORIDA DEPARTMENT OF TRANSPORTATION  
AVIATION AND SPACEPORTS OFFICE  
[www.fdot.gov/aviation](http://www.fdot.gov/aviation)