

CLEARWATER AIRPARK

CLW

Airport: Clearwater Airpark (CLW)

City: Clearwater, Florida

County: Pinellas

Sponsor: City of Clearwater

Role: General Aviation Reliever
(Local)

CFASPP West Central
Region: (cfaspp.com)

FDOT
District: 7

Website: [Clearwater](https://www.clearwaterfla.gov)

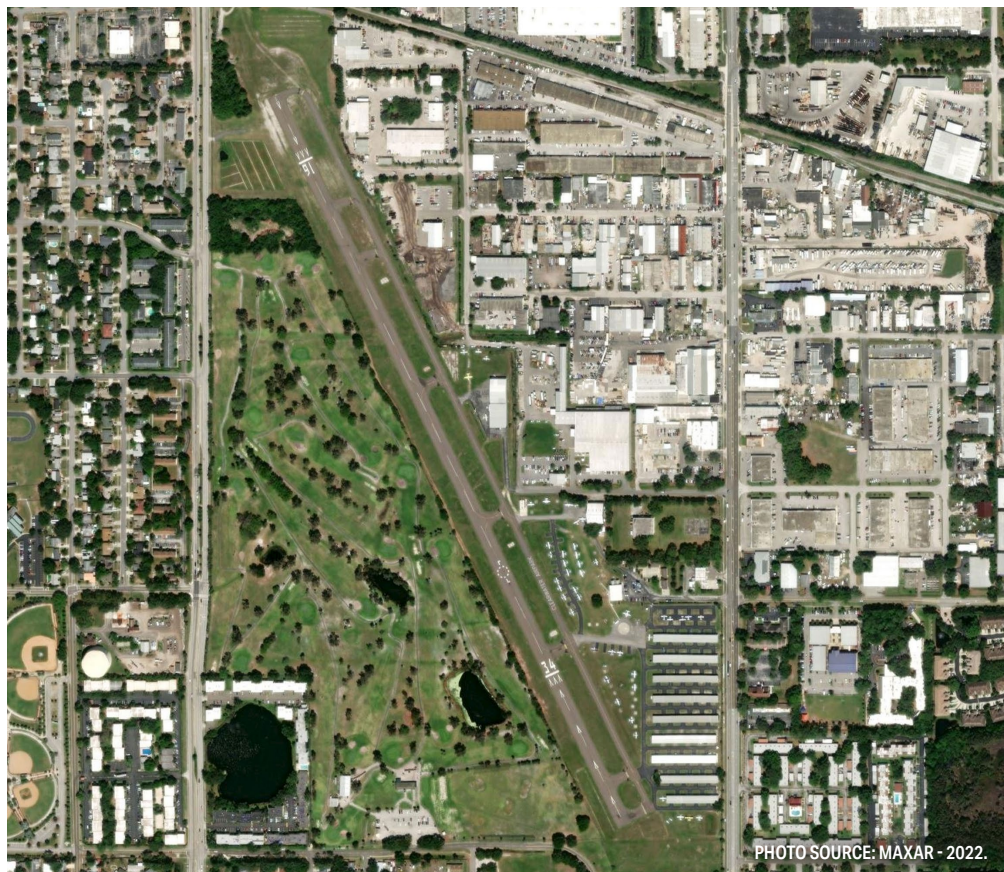
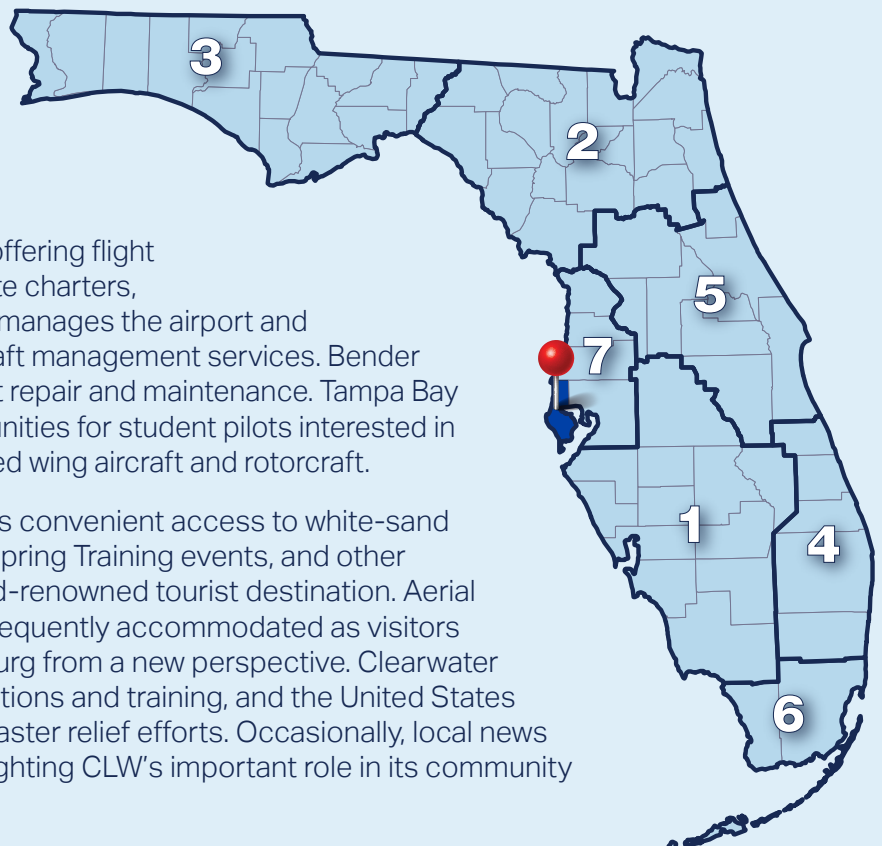


PHOTO SOURCE: MAXAR - 2022.

Clearwater Airpark (CLW) is located in Pinellas County, approximately three miles northeast of downtown Clearwater. The airport has one runway (16-34) that measures 4,108 feet long by 75 feet wide. CLW is home to a vibrant general aviation (GA) community with numerous onsite tenants offering flight instruction, aircraft maintenance services, private charters, and other aviation-related services. FlyUSA Inc. manages the airport and FBO and also provides aircraft charter and aircraft management services. Bender Aviation Services Inc. offers professional aircraft repair and maintenance. Tampa Bay Aviation offers a variety of flight training opportunities for student pilots interested in obtaining a private or commercial license for fixed wing aircraft and rotorcraft.

Located along the Florida Suncoast, CLW offers convenient access to white-sand beaches, golf resorts, Major League Baseball Spring Training events, and other attractions that make Clearwater Beach a world-renowned tourist destination. Aerial sightseeing tours and aerial photography are frequently accommodated as visitors seek to experience Clearwater and St. Petersburg from a new perspective. Clearwater Airpark also supports search and rescue operations and training, and the United States (U.S.) Coast Guard uses the airport to stage disaster relief efforts. Occasionally, local news stations operate from the airport, further highlighting CLW's important role in its community and across the region.



ECONOMIC IMPACT



\$87.9M
ECONOMIC IMPACT (OUTPUT)



\$48.2M
VALUE ADDED



\$29M
PAYROLL



685
JOBS



Source: Florida Aviation Economic Impact Study.

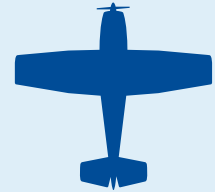
GENERAL AVIATION ROLES



FLIGHT
TRAINING



TOURISM



RECREATIONAL /
SPORT

Source: FASP 2043 Update.

For more information on airport roles, please refer to the
FAA's National Plan of Integrated Airport Systems (NPIAS).



ACTIVITY FORECASTS

OPERATIONS

95,122

2043

52,400

2023

BASED AIRCRAFT

166

2043

140

2023



Source: FASP 2043 Update.

AIRPORT CHARACTERISTICS

1 Closest Public-Use
General Aviation
Airport to Clearwater

2 Provides Flight
Instruction and
Much More

3 Supports 685
Full-Time and
Part-Time Jobs

RUNWAY INFORMATION (1)

Runway 16-34: 4,108' x 75'



Overview of the FASP 2043 Update:

Per Florida statute, the Florida Aviation System Plan (FASP) is periodically updated to summarize the airport and aviation needs in Florida while remaining consistent with the goals of the Florida Transportation Plan (FTP). The FASP 2043 Update focuses on reviewing the applicability of the various goals, objectives, and performance measures to support two primary goals: 1) provide for more efficiency in decision making within FDOT to support funding and development decisions, and 2) provide airports within the system with recommendations for development that support their individual missions while contributing to the overall strength and health of the Florida airport system.

