

# Flagler Executive Airport



FLORIDA DEPARTMENT OF TRANSPORTATION  
AVIATION AND SPACEPORTS OFFICE

**Airport:** Flagler Executive Airport (FIN)

**City:** Palm Coast, Florida

**County:** Flagler County

**Owner:** Flagler County

**Role:** General Aviation Airport



Located in Flagler County, Flagler Executive Airport consistently ranks as one of the busiest general aviation airports in Florida. What was once a rural Navy flight training station has in recent years expanded to include a contract FAA air traffic control tower and a relocated and extended main runway, allowing the airport to accommodate all types of general aviation aircraft, including seaplanes



## Existing Facilities

Three runways, two asphalt and one water, serve Flagler Executive Airport. The two asphalt runways are runway 11/29 (5,500 feet long by 100 feet wide) and runway 6/24 (5,000 feet long by 100 feet wide). They are in fair and good condition, respectively. Both runways are equipped with medium intensity edge lighting, precision approach path indicator lights, and RNAV GPS instrument approaches. Runway 11/29 also features runway end identifier lights. The seaplane landing area, designated runway 18W/36W, measures 3000 feet long by 500 feet wide. It is located on Gore Lake, just off the end of runway 6. Additionally, there is a 36-foot square helipad at Flagler Executive, reserved exclusively for Flagler County emergency services. The airport is also equipped with an FAA contract air traffic control tower that is operational from 6:00am to 8:00pm daily.

Flagler Executive Airport currently has 48 tie-downs for general aviation aircraft, as well as a combination of T-hangars and conventional hangars for a total of 70 covered parking spaces. Full- and self-service avgas and jet fuel is available. The airport's FBO, Flagler Executive Airport, provides a full range of general aviation services, including maintenance and repair.

For more information, please visit Flagler Executive Airport's website at:

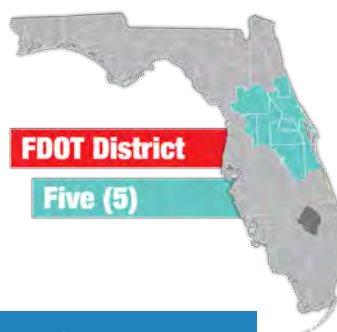
<http://www.flaglercounty.org/departments/airport/index.php>



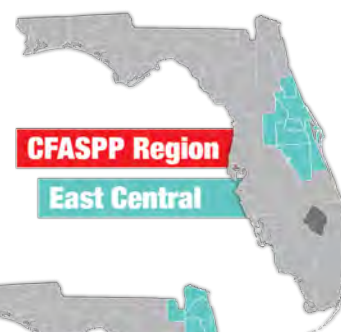
## Airport Classification



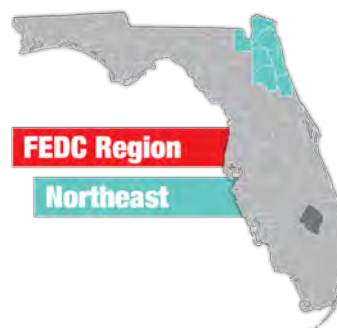
**REGIONAL  
ASSET  
GENERAL  
AVIATION AIRPORT**



**FDOT District  
Five (5)**

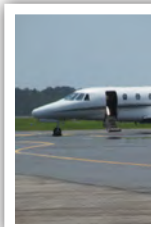


**CFASPP Region  
East Central**



**FEDC Region  
Northeast**

Regional airports support regional economies by connecting communities to statewide and interstate markets. There are 492 Regional Asset airports nationwide and 30 within Florida, including Flagler Executive Airport. More information can be found in the Federal Aviation Administration's ASSET Studies at [https://www.faa.gov/airports/planning\\_capacity/ga\\_study/](https://www.faa.gov/airports/planning_capacity/ga_study/).



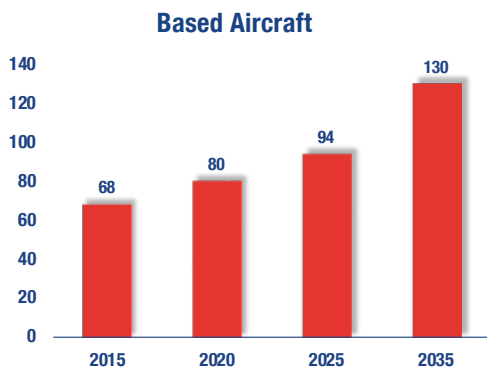


Flagler Executive Airport serves a range of general aviation activities. In particular, the airport supports a large number of flight training operations from flight schools located at the airport and in the nearby Daytona Beach area. Itinerant general aviation operations, including private, business/corporate, and air charter flights, constitute the fastest growing segment of aviation activity at Flagler Executive. Recreational /sport flying, banner towing, medical flights, and environmental patrol operations are also supported by the airport. Currently, the airport does not experience significant commercial aviation activity due to having multiple nearby commercial service airports (Daytona Beach International, Jacksonville International, Orlando International).

Despite the lack of commercial aviation activity, Flagler Executive Airport remains one of the busiest general aviation airports in Florida. With the ongoing growth of Palm Coast and Flagler County, activity and operations at the airport are only expected to continue to increase. A large retail center was recently constructed along Highway 100 just north of the airport. Further retail, commercial, and residential development is planned in the area, creating the potential for further demand at the airport. As the busiest general aviation airport with an FAA contract air traffic control tower in Florida, multiple capital improvement projects have been undertaken in recent years to address demand at the airport. Some of these projects include construction of the air traffic control tower, relocating and extending runway 11/29, addition of access roads, and development of an adjacent commerce park.

## Current and Forecast Demand

According to Florida Aviation System Plan data, in 2014 there were 75 aircraft based at Flagler Executive Airport. During the same timeframe, there were 148,264 general aviation operations and 262 commercial aviation operations, for a total of 148,526 operations. For a one year period ending on February 21, 2017, 73 percent of all general aviation operations were local while 27 percent were transient, with less than one percent coming from air taxi and military operations. The Airport Reference Code for Flagler Executive is C-II.

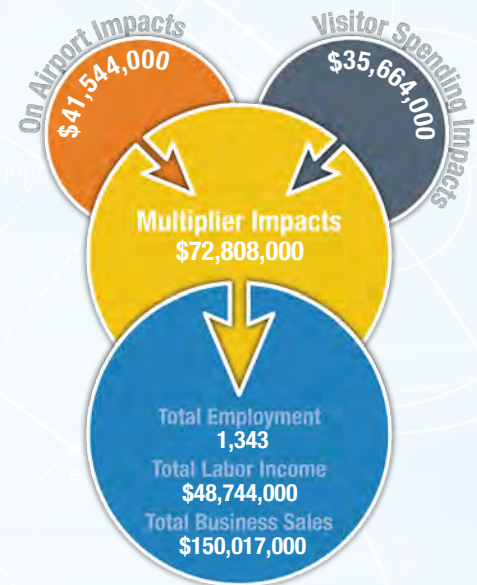




# Economic Impact

Flagler Executive Airport is located in Flagler County, approximately 20 miles north of Daytona Beach. The airport has one 3,000-foot water runway and two paved runways, the longest of which measures 5,500 feet long. The airport accommodates every type of general aviation aircraft, including large corporate jets, single-engine aircraft, rotorcraft, seaplanes, airships, and military aircraft.

The airport primarily supports private aviation, corporate business activity, and air charter flights. Due its facilities, services, and proximity along the Atlantic Coast, the airport is frequented by businesses in the surrounding region. The airport also supports recreational flying, banner towing, medical flights, and environmental patrol. The Airport Traffic Control Tower is one of the busiest Federal Contract Towers not only in Florida but in the nation. Flight schools at the airport offer flight trainings, which constitute many of the airport's operations. The airport is also frequented by tourists and snow birds.



## Other Airport Characteristics

Flagler Executive also supports general aviation operations by corporate and business users. About five percent of aircraft based at the airport are owned by local businesses. Businesses based at the airport include Midwest Turbines, Daytona Aviation, Ryan Aviation, Delta Engineering, and Four Star Aero. There are no military aircraft based at the airport and only a small amount of military operations (less than one percent of all operations).

## Current and Future System Service Requirements/Recommendations

The airport provides Flight Training, Recreational/Sport (ultralights), Corporate, and Business/Recreational (banner towing, medical flights, environmental patrol) services. The airport plans to increase its flight training, recreational, and charter operations. The analysis indicates that the airport is best suited for providing Recreational/Sport, Business/Recreational, and Tourism (CA) services. Even though the airport is one of the busiest flight training airports in the busiest regions for flight training, the lack of proper infrastructure gives it marginal suitability for providing Flight Training and Corporate services; however, when planned improvements to runway length and approaches are instituted, those service categories will be integral to the airport.



FLORIDA DEPARTMENT OF TRANSPORTATION  
AVIATION AND SPACEPORTS OFFICE  
[www.fdot.gov/aviation](http://www.fdot.gov/aviation)